

## Product datasheet

# Anti-APPBP1 antibody ab56420

1 References [画像数 1](#)

### 製品の概要

製品名	Anti-APPBP1 antibody
製品の詳細	Mouse monoclonal to APPBP1
由来種	Mouse
アプリケーション	適用あり: WB
種交差性	交差種: Human
免疫原	Recombinant full length protein, corresponding to amino acids 1-535 of Human APPBP1

### 製品の特性

製品の状態	Liquid
保存方法	Shipped at 4°C. Upon delivery aliquot and store at -20°C or -80°C. Avoid repeated freeze / thaw cycles.
バッファー	Preservative: None PBS, pH 7.2
精製度	Protein G purified
ポリ/モノ	モノクローナル
アイソタイプ	IgG2a
軽鎖の種類	kappa

### アプリケーション

Our [Abpromise guarantee](#) covers the use of **ab56420** in the following tested applications.

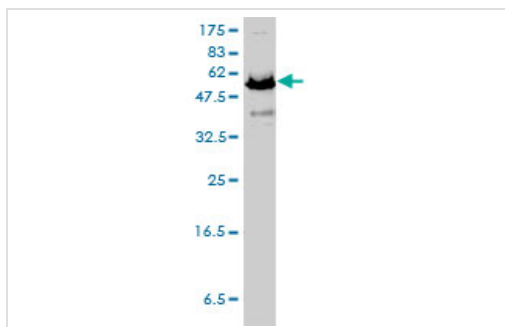
The application notes include recommended starting dilutions; optimal dilutions/concentrations should be determined by the end user.

アプリケーション	Abreviews	特記事項
WB		Use a concentration of 1 - 5 µg/ml. Predicted molecular weight: 60 kDa.

### ターゲット情報

<b>機能</b>	Regulatory subunit of the dimeric UBA3-NAE1 E1 enzyme. E1 activates NEDD8 by first adenylyating its C-terminal glycine residue with ATP, thereafter linking this residue to the side chain of the catalytic cysteine, yielding a NEDD8-UBA3 thioester and free AMP. E1 finally transfers NEDD8 to the catalytic cysteine of UBE2M. Necessary for cell cycle progression through the S-M checkpoint. Overexpression of NAE1 causes apoptosis through deregulation of NEDD8 conjugation.
<b>組織特異性</b>	Ubiquitous in fetal tissues. Expressed throughout the adult brain.
<b>パスウェイ</b>	Protein modification; protein neddylation.
<b>配列類似性</b>	Belongs to the ubiquitin-activating E1 family. ULA1 subfamily.
<b>細胞内局在</b>	Cell membrane. Colocalizes with APP in lipid rafts.

## 画像



Western blot - APPBP1 antibody (ab56420)

APPBP1 antibody (ab56420) at 1ug/lane +  
HeLa cell lysate at 25ug/lane.

**Please note:** All products are "FOR RESEARCH USE ONLY AND ARE NOT INTENDED FOR DIAGNOSTIC OR THERAPEUTIC USE"

## Our Abpromise to you: Quality guaranteed and expert technical support

- Replacement or refund for products not performing as stated on the datasheet
- Valid for 12 months from date of delivery
- Response to your inquiry within 24 hours
- We provide support in Chinese, English, French, German, Japanese and Spanish
- Extensive multi-media technical resources to help you
- We investigate all quality concerns to ensure our products perform to the highest standards

If the product does not perform as described on this datasheet, we will offer a refund or replacement. For full details of the Abpromise, please visit <http://www.abcam.co.jp/abpromise> or contact our technical team.

## Terms and conditions

- Guarantee only valid for products bought direct from Abcam or one of our authorized distributors