

## Product datasheet

# Anti-Apg3 antibody ab56409

1 References [画像数 1](#)

### 製品の概要

製品名	Anti-Apg3 antibody
製品の詳細	Mouse monoclonal to Apg3
由来種	Mouse
アプリケーション	適用あり: WB
種交差性	交差種: Human
免疫原	Recombinant fragment: MQNVINTVKG KALEVAEYLT PVLKESKFKE TGVITPEEFV AAGDHLVHHC PTWQWATGEE LKVKAYLPTG KQFLVTKNVP CYKRCKQMEY SDELEAIIIEE , corresponding to amino acids 1-101 of Human Apg3 <a href="#">Run BLAST with ExPASy</a> <a href="#">Run BLAST with NCBI</a>

### 製品の特性

製品の状態	Liquid
保存方法	Shipped at 4°C. Upon delivery aliquot and store at -20°C or -80°C. Avoid repeated freeze / thaw cycles.
バッファー	Preservative: None PBS, pH 7.2
精製度	Protein G purified
ポリモノ	モノクローナル
アイソタイプ	IgG2b
軽鎖の種類	kappa

### アプリケーション

Our [Abpromise guarantee](#) covers the use of **ab56409** in the following tested applications.

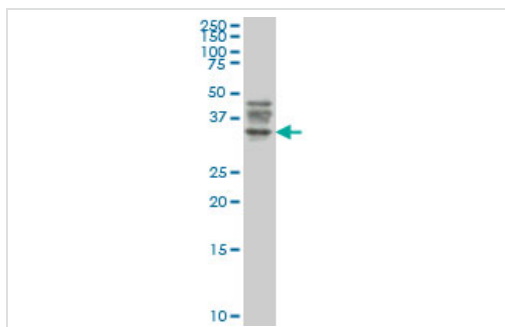
The application notes include recommended starting dilutions; optimal dilutions/concentrations should be determined by the end user.

アプリケーション	Abreviews	特記事項
WB		Use a concentration of 1 - 5 µg/ml. Predicted molecular weight: 36 kDa.

## ターゲット情報

機能	E2-like enzyme involved in autophagy and mitochondrial homeostasis. Catalyzes the conjugation of ATG8-like proteins (GABARAP, GABARAPL1, GABARAPL2 or MAP1LC3A) to phosphatidylethanolamine (PE). PE-conjugation to ATG8-like proteins is essential for autophagy. Preferred substrate is MAP1LC3A. Also acts as an autocatalytic E2-like enzyme, catalyzing the conjugation of ATG12 to itself, ATG12 conjugation to ATG3 playing a role in mitochondrial homeostasis but not in autophagy. ATG7 (E1-like enzyme) facilitates this reaction by forming an E1-E2 complex with ATG3.
組織特異性	Widely expressed, with a highest expression in heart, skeletal muscle, kidney, liver and placenta.
配列類似性	Belongs to the ATG3 family.
翻訳後修飾	Conjugated to ATG12 at Lys-243. ATG12-conjugation plays a role in regulation of mitochondrial homeostasis and cell death, while it is not involved in PE-conjugation to ATG8-like proteins and autophagy.
細胞内局在	Cytoplasm.

## 画像



Western blot - Apg3 antibody (ab56409)

Apg3 antibody (ab56409) at 1ug/lane + Jurkat cell lysate at 25ug/lane.

**Please note:** All products are "FOR RESEARCH USE ONLY AND ARE NOT INTENDED FOR DIAGNOSTIC OR THERAPEUTIC USE"

## Our Abpromise to you: Quality guaranteed and expert technical support

- Replacement or refund for products not performing as stated on the datasheet
- Valid for 12 months from date of delivery
- Response to your inquiry within 24 hours
- We provide support in Chinese, English, French, German, Japanese and Spanish
- Extensive multi-media technical resources to help you
- We investigate all quality concerns to ensure our products perform to the highest standards

If the product does not perform as described on this datasheet, we will offer a refund or replacement. For full details of the Abpromise, please visit <http://www.abcam.co.jp/abpromise> or contact our technical team.

## Terms and conditions

- Guarantee only valid for products bought direct from Abcam or one of our authorized distributors