


Product datasheet

Anti-eIF2A antibody ab55924

1 Abreviews [画像数 2](#)

製品の概要

製品名	Anti-eIF2A antibody
製品の詳細	Rabbit polyclonal to eIF2A
由来種	Rabbit
アプリケーション	適用あり: WB, IHC-P, ELISA
種交差性	交差種: Human 交差が予測される動物種: Mouse, Rat, Rabbit, Horse, Chicken, Guinea pig, Cow, Cat, Dog, Zebrafish 
免疫原	A region within synthetic peptide: DKSPDLAPTPAPQSTPRNTVSQSIGDPEIDKKIKNLKKKLKAIEQLKEQ , corresponding to C terminal amino acids 505-554 of Human eIF2A. Run BLAST with ExPASy Run BLAST with NCBI
ポジティブ・コントロール	Fetal thymus cell lysate and skin.

製品の特性

製品の状態	Liquid
保存方法	Shipped at 4°C. Upon delivery aliquot and store at -20°C. Avoid freeze / thaw cycles.
バッファー	Preservative: None Constituents: 2% Sucrose, PBS
精製度	Protein A purified
ポリ/モノ	ポリクローナル
アイソタイプ	IgG

アプリケーション

Our [Abpromise guarantee](#) covers the use of **ab55924** in the following tested applications.

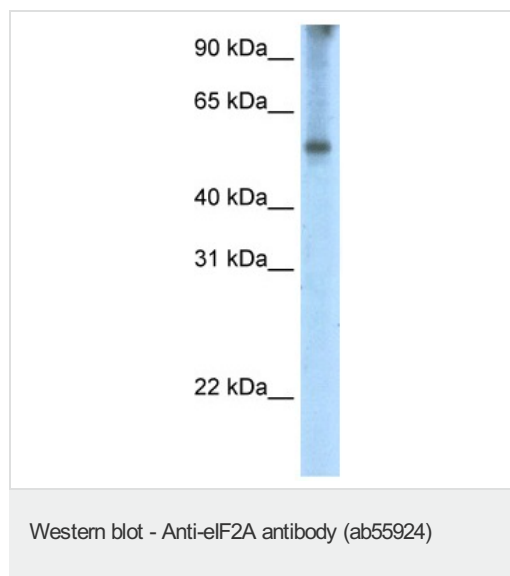
The application notes include recommended starting dilutions; optimal dilutions/concentrations should be determined by the end user.

アプリケーション	Abreviews	特記事項
WB		Use a concentration of 2.5 µg/ml. Detects a band of approximately 55 kDa (predicted molecular weight: 65 kDa). Good results were obtained when blocked with 5% non-fat dry milk in 0.05% PBS-T.
IHC-P		Use a concentration of 4 - 8 µg/ml.
ELISA		Use at an assay dependent concentration. Titre using peptide based assay: 1:312500.

ターゲット情報

機能	Functions in the early steps of protein synthesis of a small number of specific mRNAs. Acts by directing the binding of methionyl-tRNAi to 40S ribosomal subunits. In contrast to the eIF-2 complex, it binds methionyl-tRNAi to 40 S subunits in a codon-dependent manner, whereas the eIF-2 complex binds methionyl-tRNAi to 40 S subunits in a GTP-dependent manner. May act by impinging the expression of specific proteins.
組織特異性	Widely expressed. Expressed at higher level in pancreas, heart, brain and placenta.
配列類似性	Belongs to the WD repeat EIF2A family. Contains 3 WD repeats.

画像

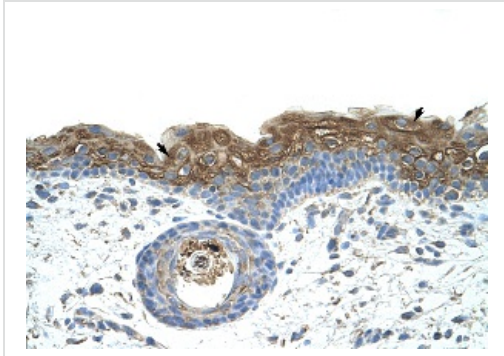


Anti-eIF2A antibody (ab55924) at 2.5 µg/ml +
Fetal thymus cell lysate at 10 µg

Secondary

HRP conjugated anti-Rabbit IgG at 1/50000
dilution

Predicted band size: 65 kDa



Immunohistochemistry (Formalin/PFA-fixed paraffin-embedded sections) analysis of human skin tissue labelling eIF2A with ab55924 at 4-8µg/ml. Arrows indicate positively labelled epidermal cells. Magnification: 400X.

Immunohistochemistry (Formalin/PFA-fixed paraffin-embedded sections) - Anti-eIF2A antibody (ab55924)

Please note: All products are "FOR RESEARCH USE ONLY AND ARE NOT INTENDED FOR DIAGNOSTIC OR THERAPEUTIC USE"

Our Abpromise to you: Quality guaranteed and expert technical support

- Replacement or refund for products not performing as stated on the datasheet
- Valid for 12 months from date of delivery
- Response to your inquiry within 24 hours
- We provide support in Chinese, English, French, German, Japanese and Spanish
- Extensive multi-media technical resources to help you
- We investigate all quality concerns to ensure our products perform to the highest standards

If the product does not perform as described on this datasheet, we will offer a refund or replacement. For full details of the Abpromise, please visit <http://www.abcam.co.jp/abpromise> or contact our technical team.

Terms and conditions

- Guarantee only valid for products bought direct from Abcam or one of our authorized distributors