

Product datasheet

Anti-ROR1 antibody ab55765

画像数 1

製品の概要

製品名	Anti-ROR1 antibody
製品の詳細	Mouse monoclonal to ROR1
由来種	Mouse
アプリケーション	適用あり: WB
種交差性	交差種: Human
免疫原	Recombinant fragment: ANCIRIGIPM ADPINKNHKC YNSTGVDYRG TVSVTKSGRQ CQPWNSQYPH THTFTALRFP ELNGGHSYCR NPGNQKEAPW CFTLDENFKS DLCDDIPACGK , corresponding to amino acids 294-393 of Human ROR1 Run BLAST with ExPASy Run BLAST with NCBI

製品の特性

製品の状態	Liquid
保存方法	Shipped at 4°C. Upon delivery aliquot and store at -20°C or -80°C. Avoid repeated freeze / thaw cycles.
バッファー	Preservative: None PBS, pH 7.2
精製度	Protein G purified
ポリモノ	モノクローナル
アイソタイプ	IgG1
軽鎖の種類	kappa

アプリケーション

Our [Abpromise guarantee](#) covers the use of **ab55765** in the following tested applications.

The application notes include recommended starting dilutions; optimal dilutions/concentrations should be determined by the end user.

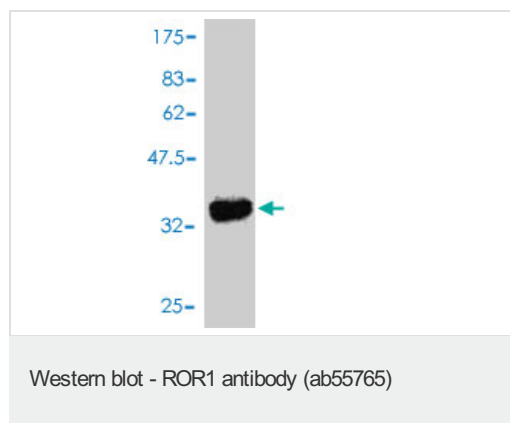
アプリケーション	Abreviews	特記事項
----------	-----------	------

アプリケーション	Abreviews	特記事項
WB		Use a concentration of 1 - 5 µg/ml. This antibody has only been tested in WB against the recombinant fragment used as immunogen. We have no data on the detection of endogenous protein.

ターゲット情報

機能	Tyrosine-protein kinase receptor whose role is not yet clear.
組織特異性	Expressed strongly in human heart, lung and kidney, but weakly in the CNS. Isoform Short is strongly expressed in fetal and adult CNS and in a variety of human cancers, including those originating from CNS or PNS neuroectoderm.
配列類似性	Belongs to the protein kinase superfamily. Tyr protein kinase family. ROR subfamily. Contains 1 FZ (frizzled) domain. Contains 1 Ig-like C2-type (immunoglobulin-like) domain. Contains 1 kringle domain. Contains 1 protein kinase domain.
発生段階	Expressed at high levels during early embryonic development. The expression levels drop strongly around day 16 and there are only very low levels in adult tissues.
細胞内局在	Membrane.

画像



Western blot against tagged recombinant protein immunogen using ab55765 ROR1 antibody at 1ug/ml. Predicted band size of immunogen is 34 kDa

Please note: All products are "FOR RESEARCH USE ONLY AND ARE NOT INTENDED FOR DIAGNOSTIC OR THERAPEUTIC USE"

Our Abpromise to you: Quality guaranteed and expert technical support

- Replacement or refund for products not performing as stated on the datasheet
- Valid for 12 months from date of delivery
- Response to your inquiry within 24 hours
- We provide support in Chinese, English, French, German, Japanese and Spanish

- Extensive multi-media technical resources to help you
- We investigate all quality concerns to ensure our products perform to the highest standards

If the product does not perform as described on this datasheet, we will offer a refund or replacement. For full details of the Abpromise, please visit <http://www.abcam.co.jp/abpromise> or contact our technical team.

Terms and conditions

- Guarantee only valid for products bought direct from Abcam or one of our authorized distributors