

Product datasheet

Anti-SGTA antibody ab55689

画像数 3

製品の概要

製品名	Anti-SGTA antibody
製品の詳細	Mouse monoclonal to SGTA
由来種	Mouse
アプリケーション	適用あり: Flow Cyt, WB, ICC/IF
種交差性	交差種: Human
免疫原	Recombinant fragment: AFGVTVEDSD LALPQTLPEI FEAAATGKEM PQDLRSPART PPSEEDSAEA ERLKTEGNEQ MKVENFEAAV HFYGKAIELN PA, corresponding to amino acids 42-124 of Human SGTA Run BLAST with ExPASy Run BLAST with NCBI

製品の特性

製品の状態	Liquid
保存方法	Shipped at 4°C. Upon delivery aliquot and store at -20°C or -80°C. Avoid repeated freeze / thaw cycles.
バッファー	Preservative: None PBS, pH 7.2
精製度	Protein G purified
ポリモノ	モノクローナル
アイソタイプ	IgG2b
軽鎖の種類	kappa

アプリケーション

Our [Abpromise guarantee](#) covers the use of **ab55689** in the following tested applications.

The application notes include recommended starting dilutions; optimal dilutions/concentrations should be determined by the end user.

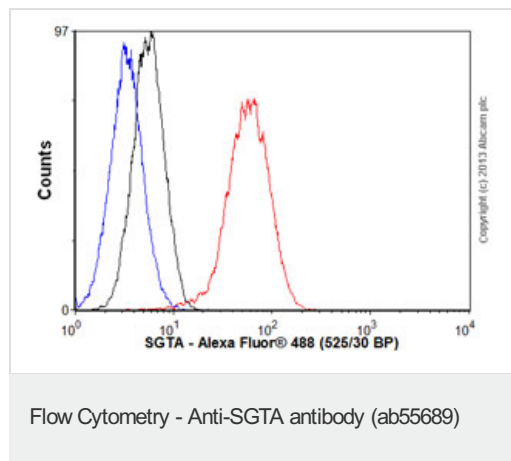
アプリケーション	Abreviews	特記事項
----------	-----------	------

アプリケーション	Abreviews	特記事項
Flow Cyt		Use 0.01-0.1µg for 10 ⁶ cells. ab170192 - Mouse monoclonal IgG2b, is suitable for use as an isotype control with this antibody.
WB		Use a concentration of 1 - 5 µg/ml. Predicted molecular weight: 34 kDa.
ICC/IF		Use a concentration of 10 µg/ml.

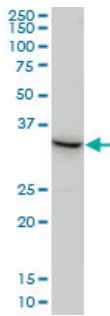
ターゲット情報

機能	Co-chaperone that binds directly to HSC70 and HSP70 and regulates their ATPase activity.
組織特異性	Ubiquitous.
配列類似性	Belongs to the SGT family. Contains 3 TPR repeats.
ドメイン	The second tetratricopeptide repeat (TPR 2) mediates the interaction with SARS-CoV accessory protein 7a.

画像

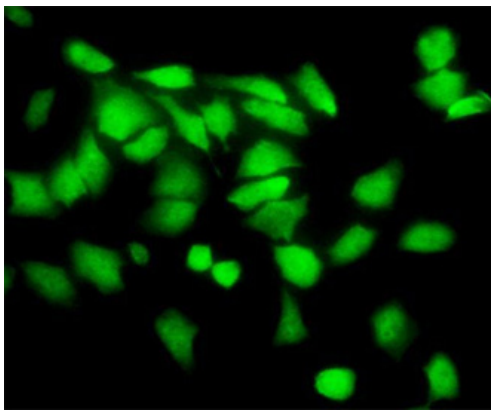


Overlay histogram showing HeLa cells stained with ab55689 (red line). The cells were fixed with 80% methanol (5 min) and then permeabilized with 0.1% PBS-Tween for 20 min. The cells were then incubated in 1x PBS / 10% normal goat serum / 0.3M glycine to block non-specific protein-protein interactions followed by the antibody (ab55689, 0.01µg/1x10⁶ cells) for 30 min at 22°C. The secondary antibody used was Alexa Fluor® 488 goat anti-mouse IgG (H&L) ([ab150113](#)) at 1/2000 dilution for 30 min at 22°C. Isotype control antibody (black line) was mouse IgG2b [PLPV219] ([ab91366](#), 1µg/1x10⁶ cells) used under the same conditions. Unlabelled sample (blue line) was also used as a control. Acquisition of >5,000 events were collected using a 20mW Argon ion laser (488nm) and 525/30 bandpass filter.



Western blot - SGTA antibody (ab55689)

SGTA antibody (ab55689) at 1ug/lane + HeLa cell lysate at 25ug/lane.



Immunocytochemistry/ Immunofluorescence-SGTA antibody(ab55689)

ab55689 at 10 ug/ml staining SGTA in human Hella cells by Immunocytochemistry/ Immunofluorescence.

Please note: All products are "FOR RESEARCH USE ONLY AND ARE NOT INTENDED FOR DIAGNOSTIC OR THERAPEUTIC USE"

Our Abpromise to you: Quality guaranteed and expert technical support

- Replacement or refund for products not performing as stated on the datasheet
- Valid for 12 months from date of delivery
- Response to your inquiry within 24 hours
- We provide support in Chinese, English, French, German, Japanese and Spanish
- Extensive multi-media technical resources to help you
- We investigate all quality concerns to ensure our products perform to the highest standards

If the product does not perform as described on this datasheet, we will offer a refund or replacement. For full details of the Abpromise, please visit <http://www.abcam.co.jp/abpromise> or contact our technical team.

Terms and conditions

- Guarantee only valid for products bought direct from Abcam or one of our authorized distributors