

## Product datasheet

# Anti-beta Sarcoglycan antibody ab55683

画像数 3

### 製品の概要

---

製品名	Anti-beta Sarcoglycan antibody
製品の詳細	Mouse monoclonal to beta Sarcoglycan
由来種	Mouse
アプリケーション	<b>適用あり:</b> WB, IHC-P, ELISA, Flow Cyt
種交差性	<b>交差種:</b> Human
免疫原	Recombinant fragment, corresponding to amino acids 87-197 of Human beta Sarcoglycan
特記事項	Abcam is committed to meeting high standards of ethical manufacturing and as such, we will be discontinuing this product, which has been generated by the ascites method, within the next year. We are sorry for any inconvenience this may cause. If you would like help finding an alternative product, please do not hesitate to contact our scientific support team.

### 製品の特性

---

製品の状態	Liquid
保存方法	Shipped at 4°C. Upon delivery aliquot and store at -20°C or -80°C. Avoid repeated freeze / thaw cycles.
バッファー	Preservative: None PBS, pH 7.2
精製度	Protein G purified
ポリ/モノ	モノクローナル
アイソタイプ	IgG2a
軽鎖の種類	kappa

### アプリケーション

---

Our [Abpromise guarantee](#) covers the use of **ab55683** in the following tested applications.

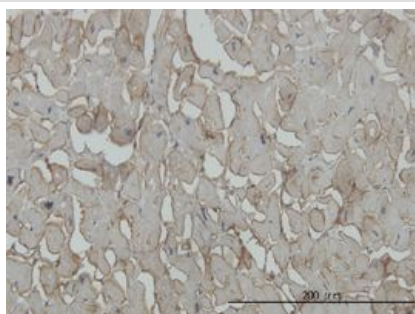
The application notes include recommended starting dilutions; optimal dilutions/concentrations should be determined by the end user.

アプリケーション	Abreviews	特記事項
WB		Use a concentration of 1 - 5 µg/ml.
IHC-P		Use a concentration of 3 µg/ml.
ELISA		Use at an assay dependent concentration.
Flow Cyt		Use 0.5µg for 10 <sup>6</sup> cells. <a href="#">ab170191</a> - Mouse monoclonal IgG2a, is suitable for use as an isotype control with this antibody.

## ターゲット情報

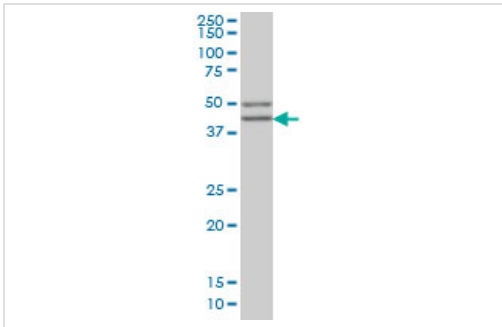
機能	Component of the sarcoglycan complex, a subcomplex of the dystrophin-glycoprotein complex which forms a link between the F-actin cytoskeleton and the extracellular matrix.
組織特異性	Highest expression in heart and skeletal muscle. Low expression in brain, kidney, placenta, pancreas and lung. High expression in fetal brain. Also found in fetal lung, kidney and liver.
関連疾患	Limb-girdle muscular dystrophy 2E
配列類似性	Belongs to the sarcoglycan beta/delta/gamma/zeta family.
翻訳後修飾	Disulfide bonds are present.
細胞内局在	Cell membrane, sarcolemma. Cytoplasm, cytoskeleton.

## 画像



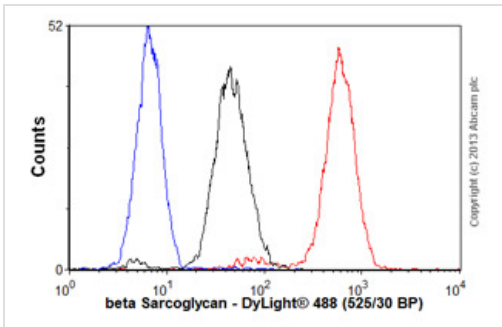
IHC-P - beta Sarcoglycan antibody (ab55683)

beta Sarcoglycan antibody (ab55683) used in immunohistochemistry at 3ug/ml on formalin fixed and paraffin embedded human heart.



Western blot - beta Sarcoglycan antibody (ab55683)

beta Sarcoglycan antibody (ab55683) at 1ug/lane + MCF-7 cell lysate at 25ug/lane.



Flow Cytometry - Anti-beta Sarcoglycan antibody (ab55683)

Overlay histogram showing A549 cells stained with ab55683 (red line). The cells were fixed with 80% methanol (5 min) and incubated in 1x PBS / 10% normal goat serum / 0.3M glycine to block non-specific protein-protein interactions. The cells were then incubated with the antibody (ab55683, 0.5µg/1x10<sup>6</sup> cells) for 30 min at 22°C. The secondary antibody used was DyLight® 488 goat anti-mouse IgG (H+L) (ab96879) at 1/500 dilution for 30 min at 22°C. Isotype control antibody (black line) was mouse IgG2a [ICIGG2A] (ab91361, 1µg/1x10<sup>6</sup> cells) used under the same conditions. Unlabelled sample (blue line). Acquisition of >5,000 events were collected using a 20mW Argon ion laser (488nm) and 525/30 bandpass filter.

Please note that Abcam do not have any data for use of this antibody on non-fixed cells. We welcome any customer feedback.

**Please note:** All products are "FOR RESEARCH USE ONLY AND ARE NOT INTENDED FOR DIAGNOSTIC OR THERAPEUTIC USE"

### Our Promise to you: Quality guaranteed and expert technical support

- Replacement or refund for products not performing as stated on the datasheet
- Valid for 12 months from date of delivery
- Response to your inquiry within 24 hours
- We provide support in Chinese, English, French, German, Japanese and Spanish
- Extensive multi-media technical resources to help you
- We investigate all quality concerns to ensure our products perform to the highest standards

If the product does not perform as described on this datasheet, we will offer a refund or replacement. For full details of the Abpromise, please visit <http://www.abcam.co.jp/abpromise> or contact our technical team.

## **Terms and conditions**

---

- Guarantee only valid for products bought direct from Abcam or one of our authorized distributors