

Product datasheet

Anti-PEPD antibody ab55605

画像数 1

製品の概要

製品名	Anti-PEPD antibody
製品の詳細	Mouse monoclonal to PEPD
由来種	Mouse
アプリケーション	適用あり: WB
種交差性	交差種: Human
免疫原	Recombinant full length protein, corresponding to amino acids 1-494 of Human PEPD

製品の特性

製品の状態	Liquid
保存方法	Shipped at 4°C. Upon delivery aliquot and store at -20°C or -80°C. Avoid repeated freeze / thaw cycles.
バッファー	Preservative: None PBS, pH 7.2
精製度	Protein G purified
ポリ/モノ	モノクローナル
アイソタイプ	IgG1
軽鎖の種類	kappa

アプリケーション

Our [Abpromise guarantee](#) covers the use of **ab55605** in the following tested applications.

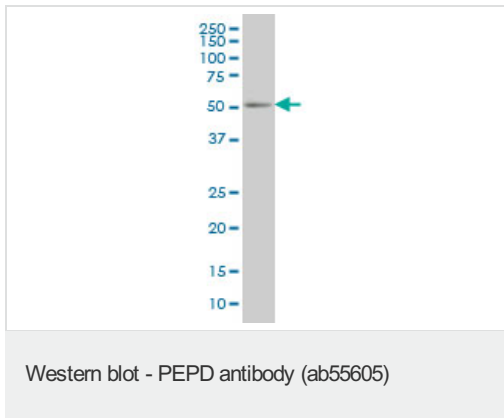
The application notes include recommended starting dilutions; optimal dilutions/concentrations should be determined by the end user.

アプリケーション	Abreviews	特記事項
WB		Use a concentration of 1 - 5 µg/ml. Predicted molecular weight: 54 kDa.

ターゲット情報

機能	Splits dipeptides with a prolyl or hydroxyprolyl residue in the C-terminal position. Plays an important role in collagen metabolism because the high level of iminoacids in collagen.
関連疾患	Defects in PEPD are a cause of prolidase deficiency (PD) [MIM:170100]. Prolidase deficiency is an autosomal recessive disorder associated with iminodipeptiduria. The clinical phenotype includes skin ulcers, mental retardation, recurrent infections, and a characteristic facies. These features, however are incompletely penetrant and highly variable in both age of onset and severity. There is a tight linkage between the polymorphisms of prolidase and the myotonic dystrophy trait.
配列類似性	Belongs to the peptidase M24B family. Eukaryotic-type prolidase subfamily.

画像



PEPD antibody (ab55605) at 1 ug/lane +
HepG2 cell lysate at 25ug/lane.

Please note: All products are "FOR RESEARCH USE ONLY AND ARE NOT INTENDED FOR DIAGNOSTIC OR THERAPEUTIC USE"

Our Abpromise to you: Quality guaranteed and expert technical support

- Replacement or refund for products not performing as stated on the datasheet
- Valid for 12 months from date of delivery
- Response to your inquiry within 24 hours
- We provide support in Chinese, English, French, German, Japanese and Spanish
- Extensive multi-media technical resources to help you
- We investigate all quality concerns to ensure our products perform to the highest standards

If the product does not perform as described on this datasheet, we will offer a refund or replacement. For full details of the Abpromise, please visit <http://www.abcam.co.jp/abpromise> or contact our technical team.

Terms and conditions

- Guarantee only valid for products bought direct from Abcam or one of our authorized distributors