

Product datasheet

Anti-MTHFR antibody ab55530

4 References [画像数 1](#)

製品の概要

製品名	Anti-MTHFR antibody
製品の詳細	Mouse monoclonal to MTHFR
由来種	Mouse
アプリケーション	<b>適用あり:</b> WB, ELISA, IHC-Fr, IHC-FoFr
種交差性	<b>交差種:</b> Mouse, Human
免疫原	Recombinant full length protein: MAREAPALWP VSSSCGSEGIAREEHLNPMGLDFLGPRWDF FAALAGRTHP GLFFHPFPHV AEDIPTMGWA HNS, corresponding to amino acids 1-74 of Human MTHFR <a href="#">Run BLAST with ExPASy</a> <a href="#">Run BLAST with NCBI</a>

製品の特性

製品の状態	Liquid
保存方法	Shipped at 4°C. Upon delivery aliquot and store at -20°C or -80°C. Avoid repeated freeze / thaw cycles.
バッファー	Preservative: None PBS, pH 7.2
精製度	Protein G purified
ポリモノ	モノクローナル
アイソタイプ	IgG2a
軽鎖の種類	kappa

アプリケーション

Our [Abpromise guarantee](#) covers the use of **ab55530** in the following tested applications.

The application notes include recommended starting dilutions; optimal dilutions/concentrations should be determined by the end user.

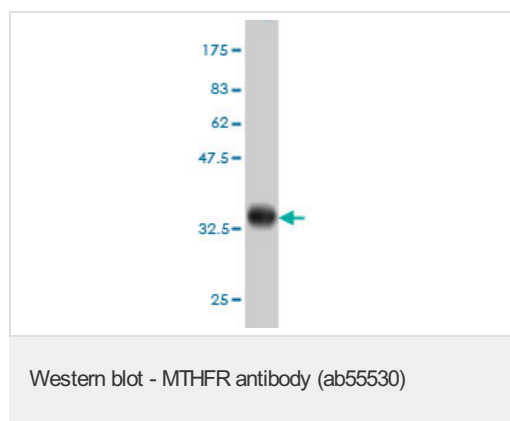
アプリケーション	Abreviews	特記事項

アプリケーション	Abreviews	特記事項
WB		Use a concentration of 1 - 5 µg/ml. This antibody has only been tested in WB against the recombinant fragment used as immunogen. We have no data on the detection of endogenous protein.
ELISA		Use at an assay dependent concentration.
IHC-Fr		Use at an assay dependent concentration. PubMed: 23525608
IHC-FoFr		Use at an assay dependent concentration. PubMed: 22419888

## ターゲット情報

機能	Catalyzes the conversion of 5,10-methylenetetrahydrofolate to 5-methyltetrahydrofolate, a co-substrate for homocysteine remethylation to methionine.
パスウェイ	One-carbon metabolism; tetrahydrofolate interconversion.
関連疾患	<p>Defects in MTHFR are the cause of methylenetetrahydrofolate reductase deficiency (MTHFRD) [MIM:236250]. MTHFRD is autosomal recessive disorder with a wide range of features including homocysteinuria, homocysteinemia [MIM:603174], developmental delay, severe mental retardation, perinatal death, psychiatric disturbances, and later-onset neurodegenerative disorders.</p> <p>Defects in MTHFR may be a cause of susceptibility to ischemic stroke (ISCHSTR) [MIM:601367]; also known as cerebrovascular accident or cerebral infarction. A stroke is an acute neurologic event leading to death of neural tissue of the brain and resulting in loss of motor, sensory and/or cognitive function. Ischemic strokes, resulting from vascular occlusion, is considered to be a highly complex disease consisting of a group of heterogeneous disorders with multiple genetic and environmental risk factors.</p> <p>Defects in MTHFR may be a cause of susceptibility to folate-sensitive neural tube defects (folate-sensitive NTD) [MIM:601634]. The most common NTDs are open spina bifida (myelomeningocele) and anencephaly.</p>
配列類似性	Belongs to the methylenetetrahydrofolate reductase family.

## 画像



Western blot against tagged recombinant protein immunogen using ab55530 MTHFR antibody at 1µg/ml. Predicted band size of immunogen is 34 kDa

### **Our Abpromise to you: Quality guaranteed and expert technical support**

---

- Replacement or refund for products not performing as stated on the datasheet
- Valid for 12 months from date of delivery
- Response to your inquiry within 24 hours
  
- We provide support in Chinese, English, French, German, Japanese and Spanish
- Extensive multi-media technical resources to help you
- We investigate all quality concerns to ensure our products perform to the highest standards

If the product does not perform as described on this datasheet, we will offer a refund or replacement. For full details of the Abpromise, please visit <http://www.abcam.co.jp/abpromise> or contact our technical team.

### **Terms and conditions**

---

- Guarantee only valid for products bought direct from Abcam or one of our authorized distributors