

## Product datasheet

# Anti-LETM1 antibody ab55434

2 References [画像数 4](#)

### 製品の概要

製品名	Anti-LETM1 antibody
製品の詳細	Mouse monoclonal to LETM1
由来種	Mouse
アプリケーション	<b>適用あり:</b> WB, IHC-P, ICC/IF, Flow Cyt
種交差性	<b>交差種:</b> Human
免疫原	Recombinant fragment, corresponding to amino acids 601-709 of Human LETM1
特記事項	Abcam is committed to meeting high standards of ethical manufacturing and as such, we will be discontinuing this product, which has been generated by the ascites method, within the next year. We are sorry for any inconvenience this may cause. If you would like help finding an alternative product, please do not hesitate to contact our scientific support team.

### 製品の特性

製品の状態	Liquid
保存方法	Shipped at 4°C. Upon delivery aliquot and store at -20°C or -80°C. Avoid repeated freeze / thaw cycles.
バッファー	Preservative: None PBS, pH 7.2
精製度	Protein G purified
ポリ/モノ	モノクローナル
アイソタイプ	IgG1
軽鎖の種類	kappa

### アプリケーション

Our [Abpromise guarantee](#) covers the use of **ab55434** in the following tested applications.

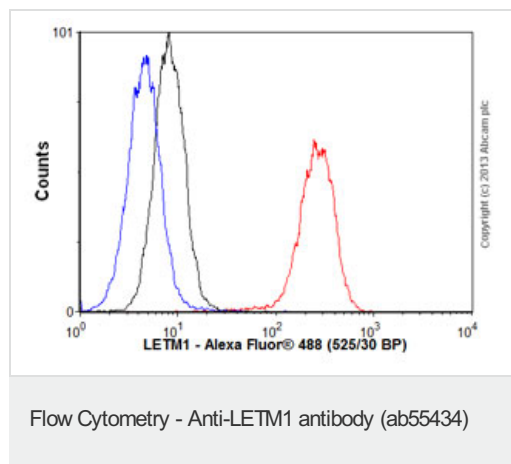
The application notes include recommended starting dilutions; optimal dilutions/concentrations should be determined by the end user.

アプリケーション	Abreviews	特記事項
WB		Use a concentration of 1 - 5 µg/ml. Predicted molecular weight: 83 kDa.
IHC-P		Use a concentration of 3 µg/ml.
ICC/IF		Use a concentration of 10 µg/ml.
Flow Cyt		Use 0.1µg for 10 <sup>6</sup> cells. <a href="#">ab170190</a> - Mouse monoclonal IgG1, is suitable for use as an isotype control with this antibody.

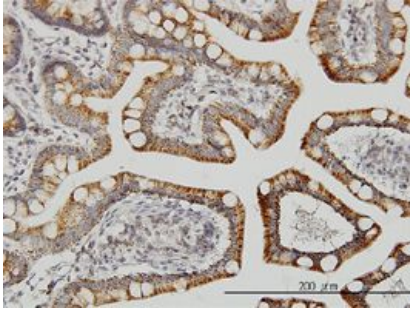
## ターゲット情報

機能	Crucial for the maintenance of mitochondrial tubular networks and for the assembly of the supercomplexes of the respiratory chain. Required for the maintenance of the tubular shape and cristae organization.
配列類似性	Contains 1 EF-hand domain. Contains 1 LETM1 domain.
細胞内局在	Mitochondrion inner membrane.

## 画像

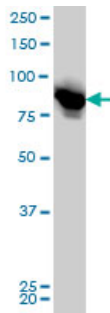


Overlay histogram showing HeLa cells stained with ab55434 (red line). The cells were fixed with 80% methanol (5 min) and then permeabilized with 0.1% PBS-Tween for 20 min. The cells were then incubated in 1x PBS / 10% normal goat serum / 0.3M glycine to block non-specific protein-protein interactions followed by the antibody (ab55434, 0.1µg/1x10<sup>6</sup> cells) for 30 min at 22°C. The secondary antibody used was Alexa Fluor® 488 goat anti-mouse IgG (H&L) ([ab150113](#)) at 1/2000 dilution for 30 min at 22°C. Isotype control antibody (black line) was mouse IgG1 [ICIGG1] ([ab91353](#), 1µg/1x10<sup>6</sup> cells) used under the same conditions. Unlabelled sample (blue line) was also used as a control. Acquisition of >5,000 events were collected using a 20mW Argon ion laser (488nm) and 525/30 bandpass filter.



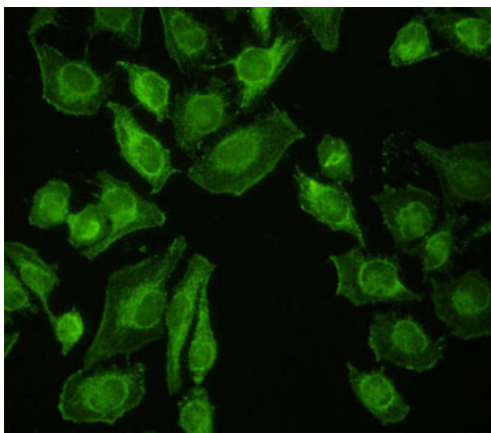
IHC-P - LETM1 antibody (ab55434)

LETM1 antibody (ab55434) used in immunohistochemistry at 3ug/ml on formalin fixed and paraffin embedded human small Intestine.



Western blot - LETM1 antibody (ab55434)

LETM1 antibody (ab55434) at 1ug/lane + HeLa cell lysate at 25ug/lane.



Immunocytochemistry/ Immunofluorescence-LETM1 antibody(ab55434)

ab55434 at 10 ug/ml staining LETM1 in human Hella cells by Immunocytochemistry/ Immunofluorescence.

**Please note:** All products are "FOR RESEARCH USE ONLY AND ARE NOT INTENDED FOR DIAGNOSTIC OR THERAPEUTIC USE"

### Our Abpromise to you: Quality guaranteed and expert technical support

- Replacement or refund for products not performing as stated on the datasheet
- Valid for 12 months from date of delivery
- Response to your inquiry within 24 hours
- We provide support in Chinese, English, French, German, Japanese and Spanish

- Extensive multi-media technical resources to help you
- We investigate all quality concerns to ensure our products perform to the highest standards

If the product does not perform as described on this datasheet, we will offer a refund or replacement. For full details of the Abpromise, please visit <http://www.abcam.co.jp/abpromise> or contact our technical team.

### **Terms and conditions**

---

- Guarantee only valid for products bought direct from Abcam or one of our authorized distributors