

Product datasheet

Anti-LLGL2 antibody ab55423

2 References 画像数 3

製品の概要

|          |  |
|----------|--|
| 製品名      | Anti-LLGL2 antibody  |
| 製品の詳細    | Mouse monoclonal to LLGL2  |
| アプリケーション | 適用あり: IHC-P, WB, Flow Cyt  |
| 種交差性     | 交差種: Human, Recombinant fragment   |
| 免疫原      | Recombinant fragment: SLKVKGGASE LQEDESFTLR GPPGAAPSAT QITVVLP HSS<br>CELLYLGTES GNVFVVQLPA FRALEDRTIS SDAVLQRLPE EARHRRVFEM VEALQEHP R,<br>corresponding to amino acids 101-200 of Human LLGL2<br><a href="#">Run BLAST with ExPASy</a> <a href="#">Run BLAST with NCBI</a> |

製品の特性

|        |   |
|--------|---|
| 製品の状態  | Liquid  |
| 保存方法   | Shipped at 4°C. Upon delivery aliquot and store at -20°C or -80°C. Avoid repeated freeze / thaw cycles. |
| バッファー  | Preservative: None<br>PBS, pH 7.2   |
| 精製度    | Protein G purified  |
| ポリモノ   | モノクローナル   |
| アイソタイプ | IgG2a   |
| 軽鎖の種類  | kappa   |

アプリケーション

Our [Abpromise guarantee](#) covers the use of **ab55423** in the following tested applications.

The application notes include recommended starting dilutions; optimal dilutions/concentrations should be determined by the end user.

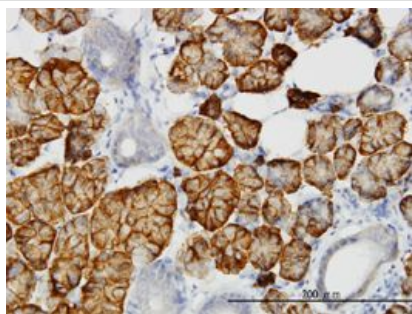
| アプリ<br>ケーショ<br>ン | Abreviews | 特記事項                            |
|------------------|-----------|---------------------------------|
| IHC-P            |           | Use a concentration of 1 µg/ml. |

| アプリ<br>ケーション | Abreviews | 特記事項   |
|--------------|-----------|--|
| WB           |           | Use a concentration of 1 - 5 µg/ml. This antibody has only been tested in WB against the recombinant fragment used as immunogen. We have no data on the detection of endogenous protein. |
| Flow<br>Cyt  |           | Use 0.5µg for 10 <sup>6</sup> cells. <a href="#">ab170191</a> -Mouse monoclonal IgG2a, is suitable for use as an isotype control with this antibody.                                     |

## ターゲット情報

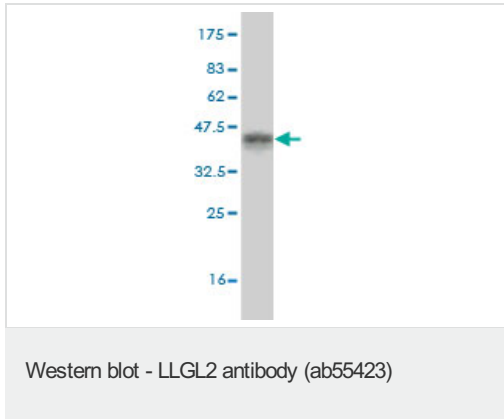
|       |  |
|-------|--|
| 機能    | Part of a complex with GPSM2/LGN, PRKCI/aPKC and PARD6B/Par-6, which may ensure the correct organization and orientation of bipolar spindles for normal cell division. This complex plays roles in the initial phase of the establishment of epithelial cell polarity.                     |
| 配列類似性 | Belongs to the WD repeat L(2)GL family.<br>Contains 14 WD repeats.   |
| 翻訳後修飾 | Phosphorylated at Ser-653 by PRKCI. Phosphorylation is enhanced during cell polarization induced by calcium. Phosphorylation may occur during the cell-cell contact-induced cell polarization and may contribute to the segregation of LLGL2 from the PRKCI/aPKC and PARD6B/Par-6 complex. |
| 細胞内局在 | Cytoplasm. Localized in the perinuclear structure and faintly at the cell-cell contacts sites in the interphase. Localized at the cell periphery during metaphase. Cortical localization in mitotic cells. Found in the lateral region of polarized epithelial cells.                      |

## 画像

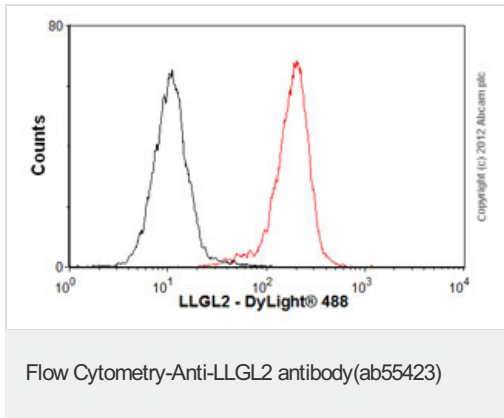


IHC-P - LLGL2 antibody (ab55423)

LLGL2 antibody (ab55423) used in immunohistochemistry at 1ug/ml on formalin fixed and paraffin embedded human salivary gland.



Western blot against tagged recombinant protein immunogen using ab55423 LLGL2 antibody at 1µg/ml. Predicted band size of immunogen is 37 kDa



Overlay histogram showing K562 cells stained with ab55423 (red line). The cells were fixed with 80% methanol (5 min) and then permeabilized with 0.1% PBS-Tween for 20 min. The cells were then incubated in 1x PBS / 10% normal goat serum / 0.3M glycine to block non-specific protein-protein interactions followed by the antibody (ab55423, 0.5µg/1x10<sup>6</sup> cells) for 30 min at 22°C. The secondary antibody used was DyLight® 488 goat anti-mouse IgG (H+L) (ab96879) at 1/500 dilution for 30 min at 22°C. Isotype control antibody (black line) was mouse IgG2a [ICIGG2A] (ab91361, 1µg/1x10<sup>6</sup> cells) used under the same conditions. Acquisition of >5,000 events was performed.

**Please note:** All products are "FOR RESEARCH USE ONLY AND ARE NOT INTENDED FOR DIAGNOSTIC OR THERAPEUTIC USE"

### Our Abpromise to you: Quality guaranteed and expert technical support

- Replacement or refund for products not performing as stated on the datasheet
- Valid for 12 months from date of delivery
- Response to your inquiry within 24 hours
- We provide support in Chinese, English, French, German, Japanese and Spanish
- Extensive multi-media technical resources to help you
- We investigate all quality concerns to ensure our products perform to the highest standards

If the product does not perform as described on this datasheet, we will offer a refund or replacement. For full details of the Abpromise, please visit <http://www.abcam.co.jp/abpromise> or contact our technical team.

## Terms and conditions

---

- Guarantee only valid for products bought direct from Abcam or one of our authorized distributors