

Product datasheet

Anti-Hormone sensitive lipase (phospho S855) antibody ab55228

画像数 1

製品の概要

製品名	Anti-Hormone sensitive lipase (phospho S855) antibody
製品の詳細	Rabbit polyclonal to Hormone sensitive lipase (phospho S855)
由来種	Rabbit
特異性	ab55228 detects endogenous levels of HSL/LIPE only when phosphorylated at serine 554.
アプリケーション	適用あり: ELISA, WB
種交差性	交差種: Human 交差が予測される動物種: Mouse, Rat ▲
免疫原	Synthetic phosphopeptide derived from human HSL/LIPE around the phosphorylation site of serine 554 (S-V-S ^P -E-A).
ポジティブ・コントロール	extracts from HeLa cells treated with Adriamycin (0.5ng/ml, 24hours),

製品の特性

製品の状態	Liquid
保存方法	Shipped at 4°C. Store at -20°C. Stable for 12 months at -20°C.
バッファー	Preservative: 0.02% Sodium Azide Constituents: 50% Glycerol, PBS, 150mM Sodium chloride, pH 7.4
精製度	Immunogen affinity purified
特記事項(精製)	The antibody against non-phosphopeptide was removed by chromatography using non-phosphopeptide corresponding to the phosphorylation site.
ポリモノ	ポリクローナル
アイソタイプ	IgG

アプリケーション

Our [Abpromise guarantee](#) covers the use of **ab55228** in the following tested applications.

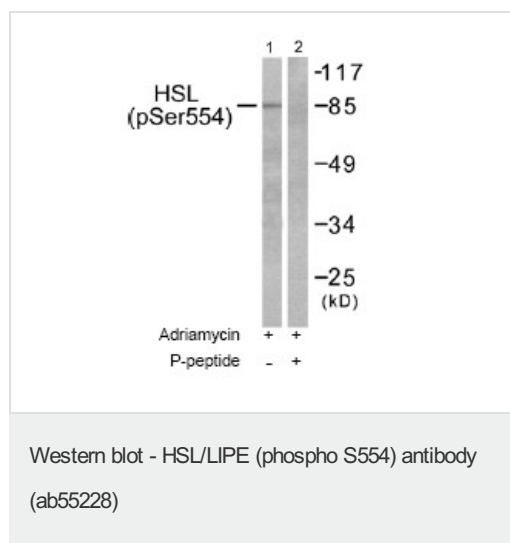
The application notes include recommended starting dilutions; optimal dilutions/concentrations should be determined by the end user.

アプリケーション	Abreviews	特記事項
ELISA		1/20000.
WB		1/500 - 1/1000. Detects a band of approximately 85 kDa (predicted molecular weight: 117 kDa).

ターゲット情報

機能	In adipose tissue and heart, it primarily hydrolyzes stored triglycerides to free fatty acids, while in steroidogenic tissues, it principally converts cholesteryl esters to free cholesterol for steroid hormone production.
パスウェイ	Glycerolipid metabolism; triacylglycerol degradation.
配列類似性	Belongs to the 'GDYG' lipolytic enzyme family.
細胞内局在	Cell membrane. Membrane > caveola. Cytoplasm > cytosol. Found in the high-density caveolae. Translocates to the cytoplasm from the caveolae upon insulin stimulation.

画像



All lanes : Anti-Hormone sensitive lipase (phospho S855) antibody (ab55228) at 1/500 dilution

Lane 1 : extracts from HeLa cells treated with Adriamycin (0.5ng/ml, 24hours).

Lane 2 : extracts from HeLa cells treated with Adriamycin (0.5ng/ml, 24hours), and treated with the immunising phosphopeptide.

Lysates/proteins at 5 µg per lane.

Secondary

All lanes : Goat Anti-Rabbit IgG (H+L)

Predicted band size: 117 kDa

Observed band size: 85 kDa

Please note: All products are "FOR RESEARCH USE ONLY AND ARE NOT INTENDED FOR DIAGNOSTIC OR THERAPEUTIC USE"

Our Abpromise to you: Quality guaranteed and expert technical support

- Replacement or refund for products not performing as stated on the datasheet
- Valid for 12 months from date of delivery

- Response to your inquiry within 24 hours
- We provide support in Chinese, English, French, German, Japanese and Spanish
- Extensive multi-media technical resources to help you
- We investigate all quality concerns to ensure our products perform to the highest standards

If the product does not perform as described on this datasheet, we will offer a refund or replacement. For full details of the Abpromise, please visit <http://www.abcam.co.jp/abpromise> or contact our technical team.

Terms and conditions

- Guarantee only valid for products bought direct from Abcam or one of our authorized distributors