

Product datasheet

Anti-Cdc4 / Fbw7 / hSel 10 antibody ab55036

画像数 2

製品の概要

製品名	Anti-Cdc4 / Fbw7 / hSel 10 antibody
製品の詳細	Mouse monoclonal to Cdc4 / Fbw7 / hSel 10
由来種	Mouse
アプリケーション	適用あり: IHC-P, WB
種交差性	交差種: Human, Recombinant fragment
免疫原	Recombinant fragment, corresponding to amino acids 599-708 of Human Cdc4/ Fbw7/ hSel 10

製品の特性

製品の状態	Liquid
保存方法	Shipped at 4°C. Upon delivery aliquot and store at -20°C or -80°C. Avoid repeated freeze / thaw cycles.
バッファー	Preservative: None PBS, pH 7.2
精製度	Protein G purified
ポリ/モノ	モノクローナル
アイソタイプ	IgG2a
軽鎖の種類	kappa

アプリケーション

Our [Abpromise guarantee](#) covers the use of **ab55036** in the following tested applications.

The application notes include recommended starting dilutions; optimal dilutions/concentrations should be determined by the end user.

アプリケーション	Abreviews	特記事項
IHC-P		Use a concentration of 3 µg/ml.

アプリ ケーショ ン	Abreviews	特記事項
------------------	-----------	------

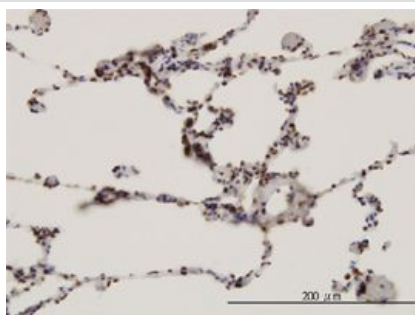
WB Use a concentration of 1 - 5 µg/ml. This antibody has only been tested in WB against the recombinant fragment used as immunogen. We have no data on the detection of endogenous protein.

ターゲット情報

関連性 Fbw7 is a member of the F box protein family which are characterized by an approximately 40 amino acid motif, the F box. The F box proteins constitute one of the four subunits of ubiquitin protein ligase complex called SCFs (SKP1-cullin-F box), which function in phosphorylation-dependent ubiquitination. The F box proteins are divided into 3 classes: Fbws containing WD40 domains, Fbls containing leucine rich repeats, and Fbxs containing either different protein-protein interaction modules or no recognizable motifs. Fbw7 belongs to the Fbws class; in addition to an F box, this protein contains 7 tandem WD40 repeats. It binds directly to cyclin E and probably targets cyclin E for ubiquitin mediated degradation. Mutations of this gene are detected in ovarian and breast cancer cell lines. Alternative splicing of this gene generates 2 transcript variants diverging at the 5' termini.

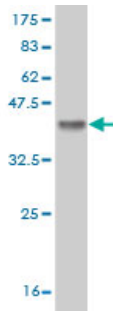
細胞内局在 Cytoplasmic and Nuclear

画像



Cdc4 / Fbw7 / hSel 10 antibody (ab55036) used in immunohistochemistry at 3ug/ml on formalin fixed and paraffin embedded human lung.

Immunohistochemistry (Formalin/PFA-fixed paraffin-embedded sections) - Cdc4 / Fbw7 / hSel 10 antibody (ab55036)



Western blot - Cdc4 / Fbw7 / hSel 10 antibody
(ab55036)

Western blot against tagged recombinant protein immunogen using ab55036 Cdc4 / Fbw7 / hSel 10 antibody at 1ug/ml. Predicted band size of immunogen is 38 kDa

Please note: All products are "FOR RESEARCH USE ONLY AND ARE NOT INTENDED FOR DIAGNOSTIC OR THERAPEUTIC USE"

Our Abpromise to you: Quality guaranteed and expert technical support

- Replacement or refund for products not performing as stated on the datasheet
- Valid for 12 months from date of delivery
- Response to your inquiry within 24 hours
- We provide support in Chinese, English, French, German, Japanese and Spanish
- Extensive multi-media technical resources to help you
- We investigate all quality concerns to ensure our products perform to the highest standards

If the product does not perform as described on this datasheet, we will offer a refund or replacement. For full details of the Abpromise, please visit <http://www.abcam.co.jp/abpromise> or contact our technical team.

Terms and conditions

- Guarantee only valid for products bought direct from Abcam or one of our authorized distributors