


Product datasheet

Anti-Elf4/MEF antibody ab54994

画像数 1

製品の概要

| | |
|----------|---|
| 製品名 | Anti-Elf4/MEF antibody |
| 製品の詳細 | Mouse monoclonal to Elf4/MEF |
| アプリケーション | 適用あり: WB |
| 種交差性 | 交差種: Recombinant fragment 交差が予測される動物種: Human  |
| 免疫原 | Recombinant fragment: IAAFIRTSGT TAAPRVKEGP LRSSSYVQGM VTGAPMEGLL VPEETLRELL RDQAHLQPLP TQVVSRGSHN PSLLGNTLS PPSRPTVGLT PV, corresponding to amino acids 521-613 of Human Elf4/MEF Run BLAST with ExPASy Run BLAST with NCBI |

製品の特性

| | |
|--------|---|
| 製品の状態 | Liquid |
| 保存方法 | Shipped at 4°C. Upon delivery aliquot and store at -20°C or -80°C. Avoid repeated freeze / thaw cycles. |
| バッファー | Preservative: None PBS, pH 7.2 |
| 精製度 | Protein G purified |
| ポリ/モノ | モノクローナル |
| アイソタイプ | IgG1 |
| 軽鎖の種類 | lambda |

アプリケーション

Our [Abpromise guarantee](#) covers the use of **ab54994** in the following tested applications.

The application notes include recommended starting dilutions; optimal dilutions/concentrations should be determined by the end user.

| アプリケーション | Abreviews | 特記事項 |
|----------|-----------|------|
| WB | | |

追加情報

WB: Use at a concentration of 1-5 µg/ml.

This antibody has only been tested in WB against the recombinant fragment used as immunogen. We have no data on the detection of endogenous protein.

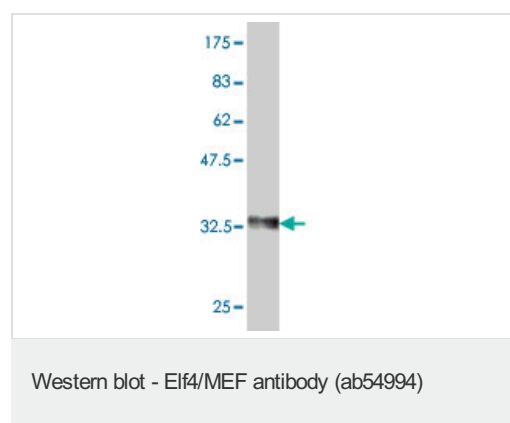
Not yet tested in other applications.

Optimal dilutions/concentrations should be determined by the end user.

ターゲット情報

| | |
|--------------|--|
| 機能 | Transcriptional activator that binds to DNA sequences containing the consensus 5'-WGGA-3'. Transactivates promoters of the hematopoietic growth factor genes CSF2, IL3, IL8, and of the bovine lysozyme gene. Acts synergistically with RUNX1 to transactivate the IL3 promoter (By similarity). Also transactivates the PRF1 promoter in natural killer (NK) cells. Plays a role in the development and function of NK and NK T-cells and in innate immunity. Controls the proliferation and homing of CD8+ T cells via the Kruppel-like factors KLF4 and KLF2 (By similarity). Controls cell senescence in a p53-dependent manner. Can also promote cellular transformation through inhibition of the p16 pathway. |
| 組織特異性 | Abundantly expressed in the placenta and in a variety of myeloid leukemia cell lines. Moderate levels of expression in heart, lung, spleen, thymus, peripheral blood lymphocytes, ovary and colon. Lower levels of expression in Jurkat T-cells and other T-cell lines and no expression in brain. |
| 関連疾患 | A chromosomal aberration involving ELF4 is a cause of acute myeloid leukemia (AML). Translocation t(X;21)(q25-26;q22) with ERG. |
| 配列類似性 | Belongs to the ETS family. Contains 1 ETS DNA-binding domain. |
| 細胞内局在 | Nucleus > PML body. Accumulation into PML nuclear bodies is mediated by PML. |

画像



Western blot against tagged recombinant protein immunogen using ab54994 Elf4/MEF antibody at 1ug/ml. Predicted band size of immunogen is 36 kDa.

This antibody has only been tested in WB against the recombinant fragment used as immunogen. We have no data on the detection of endogenous protein.

Please note: All products are "FOR RESEARCH USE ONLY AND ARE NOT INTENDED FOR DIAGNOSTIC OR THERAPEUTIC USE"

Our Abpromise to you: Quality guaranteed and expert technical support

- Replacement or refund for products not performing as stated on the datasheet

- Valid for 12 months from date of delivery
- Response to your inquiry within 24 hours

- We provide support in Chinese, English, French, German, Japanese and Spanish
- Extensive multi-media technical resources to help you
- We investigate all quality concerns to ensure our products perform to the highest standards

If the product does not perform as described on this datasheet, we will offer a refund or replacement. For full details of the Abpromise, please visit <http://www.abcam.co.jp/abpromise> or contact our technical team.

Terms and conditions

- Guarantee only valid for products bought direct from Abcam or one of our authorized distributors