

Product datasheet

Anti-VEGF Receptor 2 (phospho Y1054) antibody ab5472

★★★★☆ 1 Abreviews 5 References 画像数 1

製品の概要

製品名	Anti-VEGF Receptor 2 (phospho Y1054) antibody
製品の詳細	Rabbit polyclonal to VEGF Receptor 2 (phospho Y1054)
由来種	Rabbit
特異性	VEGFR 3 (100%) has not been tested, but is expected to react.
アプリケーション	<b>適用あり:</b> WB
種交差性	<b>交差種:</b> Mouse, Human <b>交差が予測される動物種:</b> Rat ▲
免疫原	Synthetic phospho peptide containing Tyrosine 1054. The sequence is conserved in mouse and rat.
ポジティブ・コントロール	NIH 3T3 cells transfected with full-length, wild type VEGFR 2, or Porcine Aortic cells transfected with a chimeric receptor consisting of the extracellular domain receptor coupled to the transmembrane and cytoplasmic domains of the VEGFR 2.

製品の特性

製品の状態	Liquid
保存方法	Shipped at 4°C. Upon delivery aliquot and store at -20°C or -80°C. Avoid repeated freeze / thaw cycles.
バッファー	Preservative: 0.05% Sodium Azide Constituents: PBS, 1mg/ml BSA (IgG, protease free). pH 7.3
精製度	Immunogen affinity purified
特記事項 (精製)	The antibody has been negatively preadsorbed using a non-phosphopeptide corresponding to the site of phosphorylation to remove antibody that is reactive with non-phosphorylated VEGFR 2 protein. The final product is generated by affinity chromatography using a VEGFR 2 derived peptide that is phosphorylated at Tyrosine 1054.
ポリモノ	ポリクローナル
アイソタイプ	IgG

アプリケーション

Our [Abpromise guarantee](#) covers the use of **ab5472** in the following tested applications.

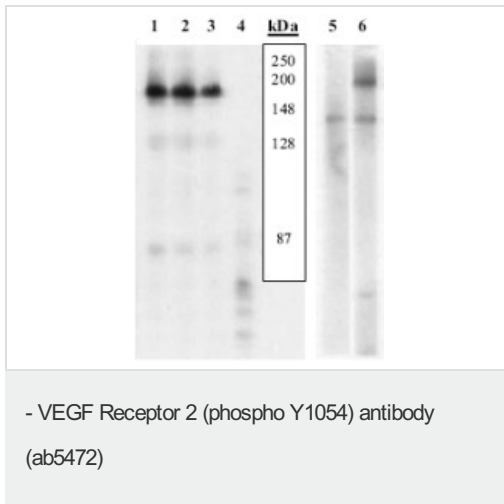
The application notes include recommended starting dilutions; optimal dilutions/concentrations should be determined by the end user.

アプリケーション	Abreviews	特記事項
WB	★★★★☆	Use a concentration of 0.35 - 1 µg/ml. Detects a band of approximately 200 kDa.

## ターゲット情報

機能	Receptor for VEGF or VEGFC. Has a tyrosine-protein kinase activity. The VEGF-kinase ligand/receptor signaling system plays a key role in vascular development and regulation of vascular permeability. In case of HIV-1 infection, the interaction with extracellular viral Tat protein seems to enhance angiogenesis in Kaposi's sarcoma lesions.
関連疾患	Defects in KDR are associated with susceptibility to hemangioma capillary infantile (HCI) [MIM:602089]. HCI are benign, highly proliferative lesions involving aberrant localized growth of capillary endothelium. They are the most common tumor of infancy, occurring in up to 10% of all births. Hemangiomas tend to appear shortly after birth and show rapid neonatal growth for up to 12 months characterized by endothelial hypercellularity and increased numbers of mast cells. This phase is followed by slow involution at a rate of about 10% per year and replacement by fibrofatty stroma.
配列類似性	Belongs to the protein kinase superfamily. Tyr protein kinase family. CSF-1/PDGF receptor subfamily. Contains 7 Ig-like C2-type (immunoglobulin-like) domains. Contains 1 protein kinase domain.
翻訳後修飾	Phosphorylated. Dephosphorylated by PTPRB. Dephosphorylated by PTPRJ at Tyr-951, Tyr-996, Tyr-1054, Tyr-1059, Tyr-1175 and Tyr-1214.
細胞内局在	Membrane.

## 画像



**Peptide Competition and Stimulation:** Extracts prepared from PAE cells transfected with a chimeric receptor or from NIH3T3 cells transfected with human VEGFR 2 were stimulated with VEGF (1-4, 6) or left unstimulated (5), then were resolved by SDS-PAGE on a 10% polyacrylamide gel and transferred to PVDF. Membranes were blocked with a 5% BSA-TBST buffer overnight at 4°C, then were incubated with 0.50 µg/mL ab5472 antibody for two hours at room temperature in a 3% BSA-TBST buffer, following prior incubation with: no peptide (1, 5-6), the non phosphopeptide corresponding to the immunogen (2), a generic phosphotyrosine containing peptide (3), or, the phosphopeptide immunogen (4). After washing, membranes were incubated with goat F(ab')<sub>2</sub> anti-rabbit IgG alkaline phosphatase and bands were detected using the Tropix WesternStar method. The data show that only the peptide corresponding to ab5472 blocks the antibody signal, and the stimulation of the phospho signal after VEGF is added (compare lanes 5 and 6), thereby demonstrating the specificity of the antibody. Note that the full-length wild type VEGFR 2 is 200 kDa (5, 6), whereas, the chimeric CSF-1-VEGFR2 is 190 kDa (1-4). The second band detected at 140 kDa in lanes 5 and 6 was observed in some but not all transfected NIH3T3 cell preparations and with multiple VEGFR 2 antibodies.

**Please note:** All products are "FOR RESEARCH USE ONLY AND ARE NOT INTENDED FOR DIAGNOSTIC OR THERAPEUTIC USE"

### Our Abpromise to you: Quality guaranteed and expert technical support

- Replacement or refund for products not performing as stated on the datasheet
- Valid for 12 months from date of delivery
- Response to your inquiry within 24 hours
- We provide support in Chinese, English, French, German, Japanese and Spanish
- Extensive multi-media technical resources to help you

- We investigate all quality concerns to ensure our products perform to the highest standards

If the product does not perform as described on this datasheet, we will offer a refund or replacement. For full details of the Abpromise, please visit <http://www.abcam.co.jp/abpromise> or contact our technical team.

### **Terms and conditions**

---

- Guarantee only valid for products bought direct from Abcam or one of our authorized distributors