

Product datasheet

Anti-TEF1 antibody [403C1a] ab54404

画像数 1

製品の概要

製品名	Anti-TEF1 antibody [403C1a]
製品の詳細	Mouse monoclonal [403C1a] to TEF1
由来種	Mouse
アプリケーション	適用あり: WB, Dot blot
種交差性	交差種: Human
免疫原	TEF1 recombinant fragment (Human)

製品の特性

製品の状態	Liquid
保存方法	Shipped at 4°C. Store at +4°C short term (1-2 weeks). Upon delivery aliquot. Store at -20°C long term.
バッファー	Preservative: 0.05% Sodium Azide Constituents: 1% BSA, PBS (8.0mM Sodium phosphate, 3.0mM Potassium chloride, 140mM Sodium chloride, 1.5mM Potassium phosphate, pH 7.4)
精製度	Protein G purified
特記事項(精製)	ab54404 was purified using protein G column chromatography from culture supernatant of hybridoma cultured in a medium containing bovine IgG depleted (approximately 95%) fetal bovine serum and filtered through a 0.22µm membrane.
ポリ/モノ	モノクローナル
クローン名	403C1a
アイソタイプ	IgG1

アプリケーション

Our [Abpromise guarantee](#) covers the use of **ab54404** in the following tested applications.

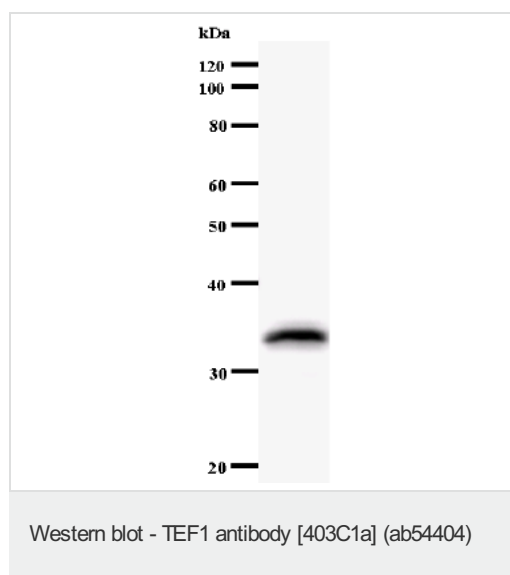
The application notes include recommended starting dilutions; optimal dilutions/concentrations should be determined by the end user.

アプリケーション	Abreviews	特記事項
WB		Use at an assay dependent dilution. Detects a band of approximately 34 kDa (predicted molecular weight: 48 kDa).
Dot blot		Use at an assay dependent dilution.

ターゲット情報

機能	Transcription factor which plays a key role in the Hippo signaling pathway, a pathway involved in organ size control and tumor suppression by restricting proliferation and promoting apoptosis. The core of this pathway is composed of a kinase cascade wherein MST1/MST2, in complex with its regulatory protein SAV1, phosphorylates and activates LATS1/2 in complex with its regulatory protein MOB1, which in turn phosphorylates and inactivates YAP1 oncoprotein and WWTR1/TAZ. Acts by mediating gene expression of YAP1 and WWTR1/TAZ, thereby regulating cell proliferation, migration and epithelial mesenchymal transition (EMT) induction. Binds specifically and cooperatively to the SPH and GT-IIC 'enhansons' (5'-GTGGAATGT-3') and activates transcription in vivo in a cell-specific manner. The activation function appears to be mediated by a limiting cell-specific transcriptional intermediary factor (TIF). Involved in cardiac development. Binds to the M-CAT motif.
組織特異性	Preferentially expressed in skeletal muscle. Lower levels in pancreas, placenta, and heart.
関連疾患	Defects in TEAD1 are the cause of Sveinsson chorioretinal atrophy (SCRA) [MIM:108985]; also known as atrophia areata (AA) or helicoidal peripapillary chorioretinal degeneration (HPCD). SCRA is characterized by symmetrical lesions radiating from the optic disk involving the retina and the choroid.
配列類似性	Contains 1 TEA DNA-binding domain.
細胞内局在	Nucleus.

画像



Anti-TEF1 antibody [403C1a] (ab54404) + immunised recombinant protein

Predicted band size: 48 kDa

Observed band size: 34 kDa

Our Abpromise to you: Quality guaranteed and expert technical support

- Replacement or refund for products not performing as stated on the datasheet
- Valid for 12 months from date of delivery
- Response to your inquiry within 24 hours

- We provide support in Chinese, English, French, German, Japanese and Spanish
- Extensive multi-media technical resources to help you
- We investigate all quality concerns to ensure our products perform to the highest standards

If the product does not perform as described on this datasheet, we will offer a refund or replacement. For full details of the Abpromise, please visit <http://www.abcam.co.jp/abpromise> or contact our technical team.

Terms and conditions

- Guarantee only valid for products bought direct from Abcam or one of our authorized distributors