

## Product datasheet

# Anti-ERCC1 antibody [SPM243], prediluted ab54240

### 画像数 1

#### 製品の概要

製品名	Anti-ERCC1 antibody [SPM243], prediluted
製品の詳細	Mouse monoclonal [SPM243] to ERCC1, prediluted
由来種	Mouse
アプリケーション	適用あり: IHC-P
種交差性	交差種: Human 交差が予測される動物種: Rat
免疫原	Recombinant full length protein (Human)
ポジティブ・コントロール	A431 or HeLa cells, or tonsil tissue.

#### 製品の特性

製品の状態	Prediluted
保存方法	Shipped at 4°C. Store at +4°C.
バッファー	Preservative: 0.1% Sodium Azide Constituents: BSA, 10mM PBS, pH 7.4
精製度	Protein A purified
ポリ/モノ	モノクローナル
クローン名	SPM243
アイソタイプ	IgG2b
軽鎖の種類	kappa

#### アプリケーション

Our [Abpromise guarantee](#) covers the use of **ab54240** in the following tested applications.

The application notes include recommended starting dilutions; optimal dilutions/concentrations should be determined by the end user.

アプリケーション	Abreviews	特記事項
IHC-P		

#### 追加情報

IHC-P: Ready-to-use, for 30 min at RT.

Staining of formalin-fixed tissues requires boiling tissue sections in 10mM citrate buffer, pH 6.0 for 10 min followed by cooling at RT for 20 min.

Not yet tested in other applications.

Optimal dilutions/concentrations should be determined by the end user.

## ターゲット情報

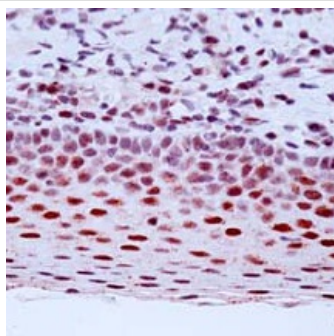
---

機能	Structure-specific DNA repair endonuclease responsible for the 5'-incision during DNA repair.
関連疾患	Defects in ERCC1 are the cause of cerebro-oculo-facio-skeletal syndrome type 4 (COFS4) [MIM:610758]. COFS is a degenerative autosomal recessive disorder of prenatal onset affecting the brain, eye and spinal cord. After birth, it leads to brain atrophy, hypoplasia of the corpus callosum, hypotonia, cataracts, microcornea, optic atrophy, progressive joint contractures and growth failure. Facial dysmorphism is a constant feature. Abnormalities of the skull, eyes, limbs, heart and kidney also occur.
配列類似性	Belongs to the ERCC1/RAD10/SWI10 family.
細胞内局在	Nucleus.

---

## 画像

---



Ab54240 staining human ERCC1 in human tonsil tissue by immunohistochemistry using formalin fixed, paraffin embedded tissue.

Immunohistochemistry (Formalin/PFA-fixed paraffin-embedded sections) - ERCC1 antibody [SPM243], prediluted (ab54240)

**Please note:** All products are "FOR RESEARCH USE ONLY AND ARE NOT INTENDED FOR DIAGNOSTIC OR THERAPEUTIC USE"

## Our Abpromise to you: Quality guaranteed and expert technical support

---

- Replacement or refund for products not performing as stated on the datasheet
- Valid for 12 months from date of delivery
- Response to your inquiry within 24 hours
- We provide support in Chinese, English, French, German, Japanese and Spanish
- Extensive multi-media technical resources to help you
- We investigate all quality concerns to ensure our products perform to the highest standards

If the product does not perform as described on this datasheet, we will offer a refund or replacement. For full details of the Abpromise, please visit <http://www.abcam.co.jp/abpromise> or contact our technical team.

## Terms and conditions

---

- Guarantee only valid for products bought direct from Abcam or one of our authorized distributors