





## Product datasheet

# Anti-TLR3 antibody ab53424

3 References [画像数 1](#)

### 製品の概要

|                     |                                                                                                                                                                                                                                                                                                                                                                                                                                                                                                                                                                                                                                                                                                                                                                                                                                                             |
|---------------------|-------------------------------------------------------------------------------------------------------------------------------------------------------------------------------------------------------------------------------------------------------------------------------------------------------------------------------------------------------------------------------------------------------------------------------------------------------------------------------------------------------------------------------------------------------------------------------------------------------------------------------------------------------------------------------------------------------------------------------------------------------------------------------------------------------------------------------------------------------------|
| <b>製品名</b>          | Anti-TLR3 antibody                                                                                                                                                                                                                                                                                                                                                                                                                                                                                                                                                                                                                                                                                                                                                                                                                                          |
| <b>製品の詳細</b>        | Rabbit polyclonal to TLR3                                                                                                                                                                                                                                                                                                                                                                                                                                                                                                                                                                                                                                                                                                                                                                                                                                   |
| <b>アプリケーション</b>     | <b>適用あり:</b> WB, IHC-P                                                                                                                                                                                                                                                                                                                                                                                                                                                                                                                                                                                                                                                                                                                                                                                                                                      |
| <b>種交差性</b>         | <b>交差種:</b> Mouse<br><b>交差が予測される動物種:</b> Rat, a wide range of other species                                                                                                                                                                                                                                                                                                                                                                                                                                                                                                                                                                                                                                                                                              |
| <b>免疫原</b>          | A mix of synthetic peptides corresponding to amino acids 135-150 (SIHKIKSNPFKNQKNL), 828-844 (CRRFKVHHAVQQAIEQN), and 876-891 (CILNWPVQKERINAFH) of mouse TLR3.<br><div style="display: flex; justify-content: space-around; margin-top: 5px;"> <div style="text-align: center;"> <a href="#">Run BLAST with</a><br/><a href="#">ab53424</a> BLAST with</div> <div style="text-align: center;"> <a href="#">Run BLAST with</a><br/><a href="#">ab53424</a> BLAST with</div> <div style="text-align: center;"> <a href="#">Run BLAST with</a><br/><a href="#">ab53424</a> BLAST with</div> </div> |
| <b>ポジティブ・コントロール</b> | Mouse spleen tissue lysate.                                                                                                                                                                                                                                                                                                                                                                                                                                                                                                                                                                                                                                                                                                                                                                                                                                 |

### 製品の特性

|               |                                                                                                        |
|---------------|--------------------------------------------------------------------------------------------------------|
| <b>製品の状態</b>  | Liquid                                                                                                 |
| <b>保存方法</b>   | Shipped at 4°C. Store at +4°C short term (1-2 weeks). Upon delivery aliquot. Store at -20°C long term. |
| <b>バッファー</b>  | Preservative: 0.05% Sodium Azide<br>Constituents: 0.05% BSA, PBS                                       |
| <b>精製度</b>    | Protein G purified                                                                                     |
| <b>ポリモノ</b>   | ポリクローナル                                                                                                |
| <b>アイソタイプ</b> | IgG                                                                                                    |

### アプリケーション

Our [Abpromise guarantee](#) covers the use of **ab53424** in the following tested applications.

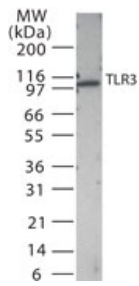
The application notes include recommended starting dilutions; optimal dilutions/concentrations should be determined by the end user.

| アプリケーション | Abreviews | 特記事項                                                                                                               |
|----------|-----------|--------------------------------------------------------------------------------------------------------------------|
| WB       |           | Use a concentration of 1 - 3 µg/ml. Detects a band of approximately 104 kDa (predicted molecular weight: 104 kDa). |
| IHC-P    |           | Use at an assay dependent concentration.                                                                           |

## ターゲット情報

|       |                                                                                                                                                                                                                                                                                                                                                                                                                                                                                                                                                                                                                                                                                                           |
|-------|-----------------------------------------------------------------------------------------------------------------------------------------------------------------------------------------------------------------------------------------------------------------------------------------------------------------------------------------------------------------------------------------------------------------------------------------------------------------------------------------------------------------------------------------------------------------------------------------------------------------------------------------------------------------------------------------------------------|
| 機能    | Key component of innate and adaptive immunity. TLRs (Toll-like receptors) control host immune response against pathogens through recognition of molecular patterns specific of microorganisms. TLR3 is a nucleotide-sensing TLR which is activated by double-stranded RNA, a sign of viral infection. Acts via MYD88 and TRAF6, leading to NF-kappa-B activation, cytokine secretion and the inflammatory response.                                                                                                                                                                                                                                                                                       |
| 組織特異性 | Expressed at high level in placenta and pancreas. Also detected in CD11c+ immature dendritic cells. Only expressed in dendritic cells and not in other leukocytes, including monocyte precursors. TLR3 is the TLR that is expressed most strongly in the brain, especially in astrocytes, glia, and neurons.                                                                                                                                                                                                                                                                                                                                                                                              |
| 関連疾患  | Defects in TLR3 are associated with herpes simplex encephalitis type 2 (HSE2) [MIM:613002]. HSE is a rare complication of human herpesvirus 1 (HHV-1) infection, occurring in only a small minority of HHV-1 infected individuals. HSE is characterized by hemorrhagic necrosis of parts of the temporal and frontal lobes. Onset is over several days and involves fever, headache, seizures, stupor, and often coma, frequently with a fatal outcome. Note=TLR3 mutations predispose otherwise healthy individuals to isolated herpes simplex encephalitis through a mechanism that involves impaired IFNs production and reduced immune defense against viral infection in the central nervous system. |
| 配列類似性 | Belongs to the Toll-like receptor family.<br>Contains 22 LRR (leucine-rich) repeats.<br>Contains 1 LRRCT domain.<br>Contains 1 LRRNT domain.<br>Contains 1 TIR domain.                                                                                                                                                                                                                                                                                                                                                                                                                                                                                                                                    |
| ドメイン  | ds-RNA binding is mediated by LRR 1 to 3, and LRR 17 to 18.                                                                                                                                                                                                                                                                                                                                                                                                                                                                                                                                                                                                                                               |
| 翻訳後修飾 | Heavily N-glycosylated, except on that part of the surface of the ectodomain that is involved in ligand binding.                                                                                                                                                                                                                                                                                                                                                                                                                                                                                                                                                                                          |
| 細胞内局在 | Endoplasmic reticulum membrane. Endosome membrane.                                                                                                                                                                                                                                                                                                                                                                                                                                                                                                                                                                                                                                                        |

## 画像



Western blot - TLR3 antibody (ab53424)

Anti-TLR3 antibody (ab53424) at 3 µg/ml +  
mouse spleen tissue lysate at 15 µg

**Predicted band size** : 104 kDa

**Observed band size** : 104 kDa

**Please note:** All products are "FOR RESEARCH USE ONLY AND ARE NOT INTENDED FOR DIAGNOSTIC OR THERAPEUTIC USE"

### Our Abpromise to you: Quality guaranteed and expert technical support

- Replacement or refund for products not performing as stated on the datasheet
- Valid for 12 months from date of delivery
- Response to your inquiry within 24 hours
- We provide support in Chinese, English, French, German, Japanese and Spanish
- Extensive multi-media technical resources to help you
- We investigate all quality concerns to ensure our products perform to the highest standards

If the product does not perform as described on this datasheet, we will offer a refund or replacement. For full details of the Abpromise, please visit <http://www.abcam.co.jp/abpromise> or contact our technical team.

### Terms and conditions

- Guarantee only valid for products bought direct from Abcam or one of our authorized distributors