


Product datasheet

Anti-Hsp105 antibody ab53107

画像数 3

製品の概要

製品名	Anti-Hsp105 antibody
製品の詳細	Rabbit polyclonal to Hsp105
特異性	ab53107 detects endogenous levels of total Hsp105 protein.
アプリケーション	適用あり: ICC/IF, WB, IHC-P, ELISA
種交差性	交差種: Human 交差が予測される動物種: Mouse 
免疫原	A synthetic peptide derived from human Hsp105.
ポジティブ・コントロール	Human colon carcinoma tissue and HeLa cell extracts.

製品の特性

製品の状態	Liquid
保存方法	Shipped at 4°C. Store at -20°C. Stable for 12 months at -20°C.
バッファー	Preservative: 0.02% Sodium Azide Constituents: 50% Glycerol, PBS (without Mg ²⁺ and Ca ²⁺), 150mM Sodium chloride, pH 7.4
精製度	Immunogen affinity purified
特記事項 (精製)	ab53107 was affinity purified from rabbit antiserum by affinity chromatography using epitope-specific immunogen.
ポリ/モノ	ポリクローナル
アイソタイプ	IgG

アプリケーション

Our [Abpromise guarantee](#) covers the use of **ab53107** in the following tested applications.

The application notes include recommended starting dilutions; optimal dilutions/concentrations should be determined by the end user.

アプリケーション	Abreviews	特記事項
ICC/IF		Use a concentration of 1 µg/ml.
WB		1/300 - 1/1000. Detects a band of approximately 97 kDa (predicted molecular weight: 97 kDa).

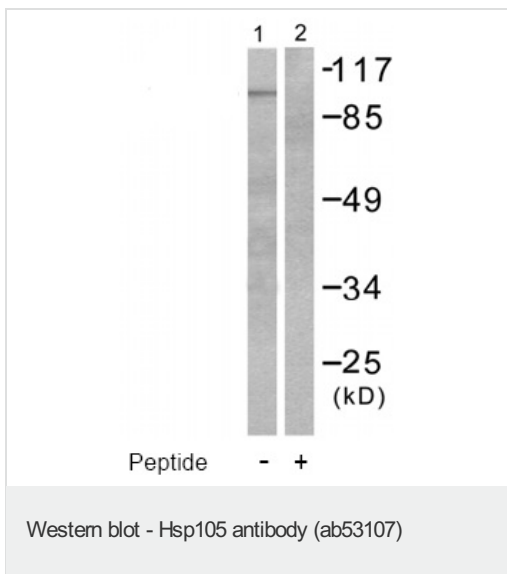
IHC-P Use at an assay dependent concentration.

ELISA 1/10000.

ターゲット情報

機能	Prevents the aggregation of denatured proteins in cells under severe stress, on which the ATP levels decrease markedly. Inhibits HSPA8/HSC70 ATPase and chaperone activities.
組織特異性	Highly expressed in testis. Present at lower levels in most brain regions, except cerebellum. Overexpressed in cancer cells.
配列類似性	Belongs to the heat shock protein 70 family.
翻訳後修飾	Phosphorylation on Ser-509 may be important for regulation of the HSPA8/HSC70 chaperone activity.
細胞内局在	Cytoplasm.

Anti-Hsp105 antibody 画像



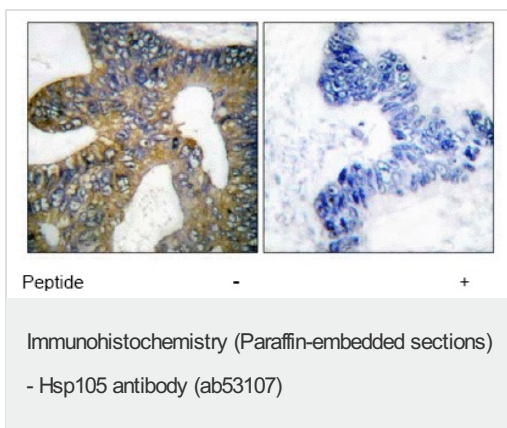
All lanes : Anti-Hsp105 antibody (ab53107)
at 1/300 dilution

Lane 1 : HeLa cell extract

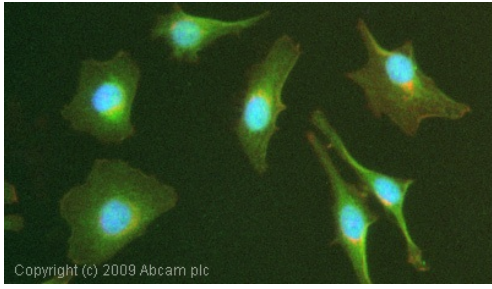
Lane 2 : HeLa cell extract with immunising peptide

Predicted band size : 97 kDa

Observed band size : 97 kDa



ab53107 at 1/50 dilution staining Hsp105 in human colon carcinoma by Immunohistochemistry, Paraffin embedded tissue, in the absence and presence of the immunising peptide.



Immunocytochemistry/ Immunofluorescence-Hsp105 antibody(ab53107)

ICC/IF image of ab53107 stained HeLa cells. The cells were 4% PFA fixed (10 min) and then incubated in 1%BSA / 10% normal goat serum / 0.3M glycine in 0.1% PBS-Tween for 1h to permeabilise the cells and block non-specific protein-protein interactions. The cells were then incubated with the antibody (ab53107, 1 μ g/ml) overnight at +4 \circ C. The secondary antibody (green) was Alexa Fluor[®] 488 goat anti-rabbit IgG (H+L) used at a 1/1000 dilution for 1h. Alexa Fluor[®] 594 WGA was used to label plasma membranes (red) at a 1/200 dilution for 1h. DAPI was used to stain the cell nuclei (blue) at a concentration of 1.43 μ M.

Please note: All products are "FOR RESEARCH USE ONLY AND ARE NOT INTENDED FOR DIAGNOSTIC OR THERAPEUTIC USE"

Our Abpromise to you: Quality guaranteed and expert technical support

- Replacement or refund for products not performing as stated on the datasheet
- Valid for 12 months from date of delivery
- Response to your inquiry within 24 hours
- We provide support in Chinese, English, French, German, Japanese and Spanish
- Extensive multi-media technical resources to help you
- We investigate all quality concerns to ensure our products perform to the highest standards

If the product does not perform as described on this datasheet, we will offer a refund or replacement. For full details of the Abpromise, please visit <http://www.abcam.co.jp/abpromise> or contact our technical team.

Terms and conditions

- Guarantee only valid for products bought direct from Abcam or one of our authorized distributors