

Product datasheet

Anti-USP11 antibody ab5269

1 References [画像数 1](#)

製品の概要

製品名	Anti-USP11 antibody
製品の詳細	Goat polyclonal to USP11
由来種	Goat
アプリケーション	適用あり: WB
種交差性	交差種: Human
免疫原	Synthetic peptide: CSSPPSSEFMDVN , corresponding to C terminal amino acids 909-921 of Human USP11. Run BLAST with Run BLAST with
ポジティブ・コントロール	Jurkat cell lysate and human testis lysate.
特記事項	GenBank Accession Number – NP_004642.

製品の特性

製品の状態	Liquid
保存方法	Shipped at 4°C. Upon delivery aliquot and store at -20°C or -80°C. Avoid repeated freeze / thaw cycles.
バッファー	Preservative: 0.02% Sodium Azide Constituents: 0.5% BSA, Tris buffered saline, pH 7.3
精製度	Immunogen affinity purified
特記事項 (精製)	Purified from goat serum by ammonium sulphate precipitation followed by antigen affinity chromatography using the immunizing peptide.
ポリ/モノ	ポリクローナル
アイソタイプ	IgG

アプリケーション

Our [Abpromise guarantee](#) covers the use of **ab5269** in the following tested applications.

The application notes include recommended starting dilutions; optimal dilutions/concentrations should be determined by the end user.

アプリ ケーショ ン	Abreviews	特記事項
------------------	-----------	------

WB Use a concentration of 1 - 3 µg/ml. Detects a band of approximately 120-130 kDa (predicted molecular weight: 110 kDa). Can be blocked with [Human USP11 peptide \(ab23087\)](#).

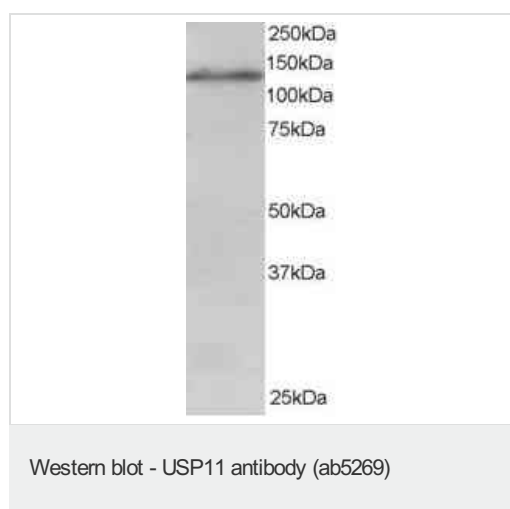
ターゲット情報

機能 Protease that can remove conjugated ubiquitin from target proteins and polyubiquitin chains. Inhibits the degradation of target proteins by the proteasome. Plays a role in the regulation of pathways leading to NF-kappa-B activation. Plays a role in the regulation of DNA repair after double-stranded DNA breaks.

配列類似性 Belongs to the peptidase C19 family.
Contains 1 DUSP domain.

細胞内局在 Nucleus. Cytoplasm. Predominantly nuclear. Associates with chromatin.

画像



ab5269 staining (1 µg/ml) of Jurkat lysate (RIPA buffer, 30 µg total protein per lane). Primary incubated for 1 hour. Detected by western blot using chemiluminescence.

ab5269 staining (1 µg/ml) of Jurkat lysate (RIPA buffer, 30 µg total protein per lane). Primary incubated for 1 hour. Detected by western blot using chemiluminescence.

Please note: All products are "FOR RESEARCH USE ONLY AND ARE NOT INTENDED FOR DIAGNOSTIC OR THERAPEUTIC USE"

Our Abpromise to you: Quality guaranteed and expert technical support

- Replacement or refund for products not performing as stated on the datasheet
- Valid for 12 months from date of delivery
- Response to your inquiry within 24 hours
- We provide support in Chinese, English, French, German, Japanese and Spanish
- Extensive multi-media technical resources to help you
- We investigate all quality concerns to ensure our products perform to the highest standards

If the product does not perform as described on this datasheet, we will offer a refund or replacement. For full details of the Abpromise,

please visit <http://www.abcam.co.jp/abpromise> or contact our technical team.

Terms and conditions

- Guarantee only valid for products bought direct from Abcam or one of our authorized distributors