


Product datasheet

Anti-Bcr (phospho Y177) antibody ab51040

画像数 1

製品の概要

製品名	Anti-Bcr (phospho Y177) antibody
製品の詳細	Rabbit polyclonal to Bcr (phospho Y177)
特異性	The antibody detects endogenous levels of Bcr only when phosphorylated at tyrosine 177
アプリケーション	適用あり: ELISA, WB
種交差性	交差種: Human 交差が予測される動物種: Rat 
免疫原	Synthetic phosphopeptide derived from human Bcr around the phosphorylation site of tyrosine 177 (P-F-Y ^P -V-N).
ポジティブ・コントロール	Extracts form K562 cells

製品の特性

製品の状態	Liquid
保存方法	Shipped at 4°C. Upon delivery aliquot and store at -20°C. Avoid freeze / thaw cycles.
バッファー	Preservative: 0.02% Sodium Azide Constituents: 50% Glycerol, PBS, 150mM Sodium chloride, pH 7.4
精製度	Immunogen affinity purified
特記事項(精製)	The antibody was affinity purified from rabbit antiserum by affinity chromatography using epitope specific phosphopeptide. The antibody against non-phosphopeptide was removed by chromatography using non-phosphopeptide corresponding to the phosphorylation site.
ポリ/モノ	ポリクローナル
アイソタイプ	IgG

アプリケーション

Our [Abpromise guarantee](#) covers the use of **ab51040** in the following tested applications.

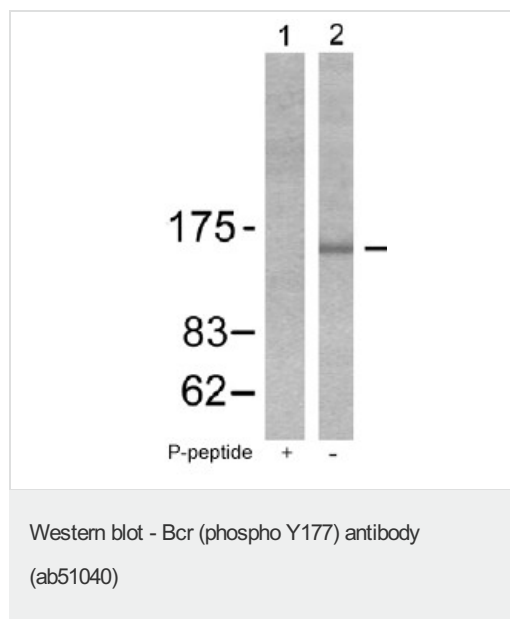
The application notes include recommended starting dilutions; optimal dilutions/concentrations should be determined by the end user.

アプリケーション	Abreviews	特記事項
ELISA		1/10000.
WB		1/500 - 1/1000. Detects a band of approximately 143 kDa (predicted molecular weight: 143 kDa).

ターゲット情報

機能	GTPase-activating protein for RAC1 and CDC42. Promotes the exchange of RAC or CDC42-bound GDP by GTP, thereby activating them. Displays serine/threonine kinase activity.
関連疾患	Note=A chromosomal aberration involving BCR is a cause of chronic myeloid leukemia. Translocation t(9;22)(q34;q11) with ABL1. The translocation produces a BCR-ABL found also in acute myeloid leukemia (AML) and acute lymphoblastic leukemia (ALL).
配列類似性	Contains 1 C2 domain. Contains 1 DH (DBL-homology) domain. Contains 1 PH domain. Contains 1 Rho-GAP domain.
ドメイン	The region involved in binding to ABL1 SH2-domain is rich in serine residues and needs to be Ser/Thr phosphorylated prior to SH2 binding. This region is essential for the activation of the ABL1 tyrosine kinase and transforming potential of the chimeric BCR-ABL oncogene. The DH domain is involved in interaction with CCGP1.
翻訳後修飾	Autophosphorylated. Phosphorylated by FES/FPS on tyrosine residues, leading to down-regulation of the BCR kinase activity. Phosphorylation at Tyr-177 by HCK is important for interaction with GRB2.

画像



All lanes : Anti-Bcr (phospho Y177) antibody (ab51040) at 1/500 dilution

Lane 1 : K562 cell extract, treated with the immunising peptide.

Lane 2 : K562 cell extract, untreated.

Predicted band size : 143 kDa

Observed band size : 143 kDa

Please note: All products are "FOR RESEARCH USE ONLY AND ARE NOT INTENDED FOR DIAGNOSTIC OR THERAPEUTIC USE"

Our Abpromise to you: Quality guaranteed and expert technical support

- Replacement or refund for products not performing as stated on the datasheet
- Valid for 12 months from date of delivery
- Response to your inquiry within 24 hours

- We provide support in Chinese, English, French, German, Japanese and Spanish
- Extensive multi-media technical resources to help you
- We investigate all quality concerns to ensure our products perform to the highest standards

If the product does not perform as described on this datasheet, we will offer a refund or replacement. For full details of the Abpromise, please visit <http://www.abcam.co.jp/abpromise> or contact our technical team.

Terms and conditions

- Guarantee only valid for products bought direct from Abcam or one of our authorized distributors