

Product datasheet

Anti-CARD8 antibody [2108C2a] ab50977

画像数 2

製品の概要

製品名	Anti-CARD8 antibody [2108C2a]
製品の詳細	Mouse monoclonal [2108C2a] to CARD8
由来種	Mouse
アプリケーション	適用あり: WB, IP, Dot blot
種交差性	交差種: Human
免疫原	Recombinant human CARD8 fragment
エピトープ	ab50977 was purified using protein G column chromatography from culture supernatant of hybridoma cultured in a medium containing bovine IgG-depleted (approximately 95%) fetal bovine serum.
ポジティブ・コントロール	HeLa whole cell lysate

製品の特性

製品の状態	Liquid
保存方法	Shipped at 4°C. Store at +4°C short term (1-2 weeks). Upon delivery aliquot. Store at -20°C long term.
バッファー	Preservative: 0.05% Sodium Azide Constituents: 1% BSA, PBS, 8.0mM Sodium phosphate, 3mM Potassium chloride, 140mM Sodium chloride, 1.5mM Potassium phosphate, pH 7.4
精製度	Protein G purified
ポリ/モノ	モノクローナル
クローン名	2108C2a
アイソタイプ	IgG1

アプリケーション

Our [Abpromise guarantee](#) covers the use of **ab50977** in the following tested applications.

The application notes include recommended starting dilutions; optimal dilutions/concentrations should be determined by the end user.

アプリケーション	Abreviews	特記事項
----------	-----------	------

WB

IP

Dot blot

追加情報

Dot: Use at an assay dependent dilution.
 IP: Use 5µg/200ul HeLa RIPA lysate.
 WB: Use at an assay dependent dilution. Detects a band of approximately 46 kDa (predicted molecular weight: 49 kDa).

Not yet tested in other applications.
 Optimal dilutions/concentrations should be determined by the end user.

ターゲット情報

機能

Inhibits NF-kappa-B activation. May participate in a regulatory mechanism that coordinates cellular responses controlled by NF-kappa-B transcription factor. May be a component of the inflammasome, a protein complex which also includes PYCARD, NALP2 and CASP1 and whose function would be the activation of proinflammatory caspases.

組織特異性

High expression in lung, ovary, testis and placenta. Lower expression in heart, kidney and liver. Also expressed in spleen, lymph node and bone marrow.

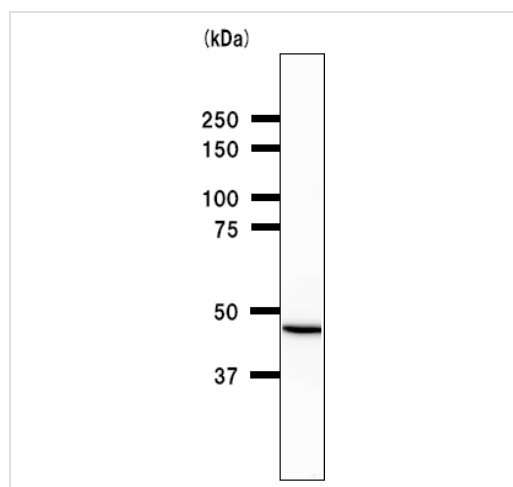
配列類似性

Contains 1 CARD domain.

細胞内局在

Cytoplasm. Nucleus.

画像



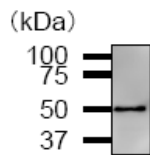
Anti-CARD8 antibody [2108C2a] (ab50977)
 at 1/200 dilution + HeLa whole cell lysate at 25 µg

Secondary
 anti-mouse IgG at 1/2500 dilution

Developed using the ECL technique.

Predicted band size: 49 kDa
Observed band size: 46 kDa

Western blot - CARD8 antibody [2108C2a] (ab50977)



Immunoprecipitation - CARD8 antibody [2108C2a]
(ab50977)

Immunoprecipitation analysis using ab50977
at 5ug per 200ul HeLa cell RIPA lysate.
Immunoblot: ab50977 at 1/200 dilution using
1/1000 anti-mouse IgG as a secondary
antibody.

Please note: All products are "FOR RESEARCH USE ONLY AND ARE NOT INTENDED FOR DIAGNOSTIC OR THERAPEUTIC USE"

Our Abpromise to you: Quality guaranteed and expert technical support

- Replacement or refund for products not performing as stated on the datasheet
- Valid for 12 months from date of delivery
- Response to your inquiry within 24 hours
- We provide support in Chinese, English, French, German, Japanese and Spanish
- Extensive multi-media technical resources to help you
- We investigate all quality concerns to ensure our products perform to the highest standards

If the product does not perform as described on this datasheet, we will offer a refund or replacement. For full details of the Abpromise, please visit <http://www.abcam.co.jp/abpromise> or contact our technical team.

Terms and conditions

- Guarantee only valid for products bought direct from Abcam or one of our authorized distributors