


Product datasheet

Anti-Nicotinic Acetylcholine Receptor alpha 2 antibody ab48943

1 Abreviews 画像数 1

製品の概要

製品名	Anti-Nicotinic Acetylcholine Receptor alpha 2 antibody
製品の詳細	Rabbit polyclonal to Nicotinic Acetylcholine Receptor alpha 2
アプリケーション	適用あり: ELISA, WB
種交差性	交差種: Human 交差が予測される動物種: Chimpanzee 
免疫原	A region within synthetic peptide: MGPSCPVFLS FTKLSLWLL LTPAGGEEAK RPPP RAPGDP LSSPSPTALP, corresponding to N terminal amino acids 1-50 of Human Nicotinic Acetylcholine Receptor alpha 2 <a href="#">Run BLAST with ExPASy</a> <a href="#">Run BLAST with NCBI</a>
ポジティブ・コントロール	HepG2 cell lysates Raji cell lysates

製品の特性

製品の状態	Liquid
保存方法	Shipped at 4°C. Upon delivery aliquot and store at -20°C. Avoid freeze / thaw cycles.
バッファー	Preservative: None Constituents: 2% Sucrose, PBS
精製度	Protein A purified
特記事項(精製)	Purified by Protein G/A affinity chromatography method.
ポリ/モノ	ポリクローナル
アイソタイプ	IgG

アプリケーション

Our [Abpromise guarantee](#) covers the use of **ab48943** in the following tested applications.

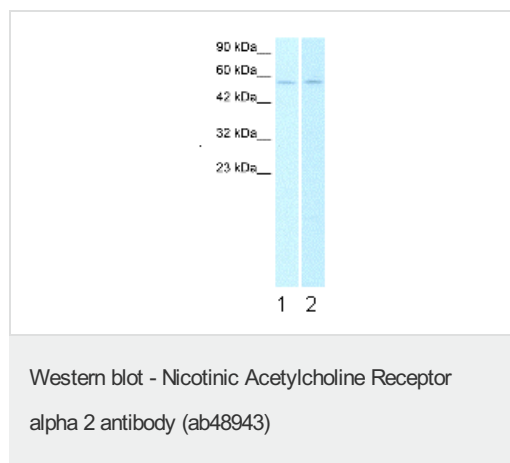
The application notes include recommended starting dilutions; optimal dilutions/concentrations should be determined by the end user.

アプリ ケーション	Abreviews	特記事項
ELISA		1/15000.
WB		Use a concentration of 1 µg/ml. Detects a band of approximately 58 kDa (predicted molecular weight: 60 kDa). Good results were obtained when blocked with 5% non-fat dry milk in 0.05% PBS-T.

## ターゲット情報

機能	After binding acetylcholine, the AChR responds by an extensive change in conformation that affects all subunits and leads to opening of an ion-conducting channel across the plasma membrane.
関連疾患	Defects in CHRNA2 are the cause of nocturnal frontal lobe epilepsy type 4 (ENFL4) [MIM:610353]. ENFL4 is an autosomal dominant epilepsy characterized by nocturnal seizures associated with fear sensation, tongue movements, and nocturnal wandering, closely resembling nightmares and sleep walking.
配列類似性	Belongs to the ligand-gated ion channel (TC 1.A.9) family. Acetylcholine receptor (TC 1.A.9.1) subfamily. Alpha-2/CHRNA2 sub-subfamily.
細胞内局在	Cell junction > synapse > postsynaptic cell membrane. Cell membrane.

## 画像



**All lanes :** Anti-Nicotinic Acetylcholine Receptor alpha 2 antibody (ab48943) at 2.5 µg/ml

**Lane 1 :** HepG2 cell lysate

**Lane 2 :** Raji cell lysate

Lysates/proteins at 10 µg per lane.

### Secondary

**Lane 2 :** HRP conjugated anti-Rabbit IgG at 1/50000 dilution

**Predicted band size :** 60 kDa

**Observed band size :** 58 kDa

**Please note:** All products are "FOR RESEARCH USE ONLY AND ARE NOT INTENDED FOR DIAGNOSTIC OR THERAPEUTIC USE"

## **Our Abpromise to you: Quality guaranteed and expert technical support**

---

- Replacement or refund for products not performing as stated on the datasheet
- Valid for 12 months from date of delivery
- Response to your inquiry within 24 hours
  
- We provide support in Chinese, English, French, German, Japanese and Spanish
- Extensive multi-media technical resources to help you
- We investigate all quality concerns to ensure our products perform to the highest standards

If the product does not perform as described on this datasheet, we will offer a refund or replacement. For full details of the Abpromise, please visit <http://www.abcam.co.jp/abpromise> or contact our technical team.

## **Terms and conditions**

---

- Guarantee only valid for products bought direct from Abcam or one of our authorized distributors