

## Product datasheet

# Anti-RbAp48 antibody [11G10] ab488

★★★★★ 3 Abreviews 11 References 画像数 3

### 製品の概要

製品名	Anti-RbAp48 antibody [11G10]
製品の詳細	Mouse monoclonal [11G10] to RbAp48
アプリケーション	<b>適用あり:</b> Flow Cyt, WB, IP, ICC/IF
種交差性	<b>交差種:</b> Mouse, Human
免疫原	Fusion protein containing the complete coding region (amino acids 1-425) of RbAp48 expressed in <i>E. coli</i> .
ポジティブ・コントロール	Molt 4, HeLa cells.
特記事項	

This protein is a ubiquitously expressed nuclear protein and belongs to a highly conserved subfamily of WD-repeat proteins. It is found among several proteins that binds directly to retinoblastoma protein, which regulates cell proliferation. The encoded protein is found in many histone deacetylase complexes, including mSin3 co-repressor complex. It is also present in protein complexes involved in chromatin assembly. This protein can interact with BRCA1 tumor-suppressor gene and may have a role in the regulation of cell proliferation and differentiation.

### 製品の特性

製品の状態	Liquid
保存方法	Shipped at 4°C. Upon delivery aliquot and store at -20°C or -80°C. Avoid repeated freeze / thaw cycles.
バッファー	Preservative: None Constituents: 10mM PBS, pH 7.4
精製度	Protein G purified
特記事項 (精製)	Purified from ascites by protein G chromatography to at least 95% homogeneity as determined by SDS-PAGE.
一次抗体 備考	This protein is a ubiquitously expressed nuclear protein and belongs to a highly conserved subfamily of WD-repeat proteins. It is found among several proteins that binds directly to retinoblastoma protein, which regulates cell proliferation. The encoded protein is found in many histone deacetylase complexes, including mSin3 co-repressor complex. It is also present in protein complexes involved in chromatin assembly. This protein can interact with BRCA1 tumor-suppressor gene and may have a role in the regulation of cell proliferation and differentiation.

ポリ/モノ	モノクローナル
クローン名	11G10
ミエローマ	NS1
アイソタイプ	IgG2b
軽鎖の種類	kappa

## アプリケーション

Our [Abpromise guarantee](#) covers the use of **ab488** in the following tested applications.

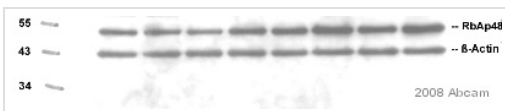
The application notes include recommended starting dilutions; optimal dilutions/concentrations should be determined by the end user.

アプリケーション	Abreviews	特記事項
Flow Cyt		Use 1µg for 10 <sup>6</sup> cells. <a href="#">ab170192</a> - Mouse monoclonal IgG2b, is suitable for use as an isotype control with this antibody.
WB	★★★★★	Use a concentration of 1 - 5 µg/ml. Predicted molecular weight: 47.5 kDa. Can be blocked with <a href="#">RbAp48 peptide (ab5014)</a> . Dilute in 5% Milk/PBST and incubate at 4°C overnight. Use under reducing conditions.
IP		Use a concentration of 1 - 5 µg/ml.
ICC/IF	★★★★☆	1/500 - 1/1000. Permeabilization step recommended. Use in PBST containing 2% BSA and 10% normal serum at 4°C overnight.

## ターゲット情報

機能	Core histone-binding subunit that may target chromatin assembly factors, chromatin remodeling factors and histone deacetylases to their histone substrates in a manner that is regulated by nucleosomal DNA. Component of several complexes which regulate chromatin metabolism. These include the chromatin assembly factor 1 (CAF-1) complex, which is required for chromatin assembly following DNA replication and DNA repair; the core histone deacetylase (HDAC) complex, which promotes histone deacetylation and consequent transcriptional repression; the nucleosome remodeling and histone deacetylase complex (the NuRD complex), which promotes transcriptional repression by histone deacetylation and nucleosome remodeling; the PRC2/EED-EZH2 complex, which promotes repression of homeotic genes during development; and the NURF (nucleosome remodeling factor) complex.
配列類似性	Belongs to the WD repeat RBAP46/RBAP48/MSI1 family. Contains 6 WD repeats.
細胞内局在	Nucleus.

## 画像



Western blot - Anti-RbAp48 antibody [11G10] (ab488)

This image is courtesy of an anonymous Abreview

Anti-RbAp48 antibody [11G10] (ab488) at 2 µg/ml + Whole cell lysates prepared from human colon adenocarcinoma SW480 cell line at 30 µg

### Secondary

HRP-conjugated goat anti-mouse IgG at 1/10000 dilution

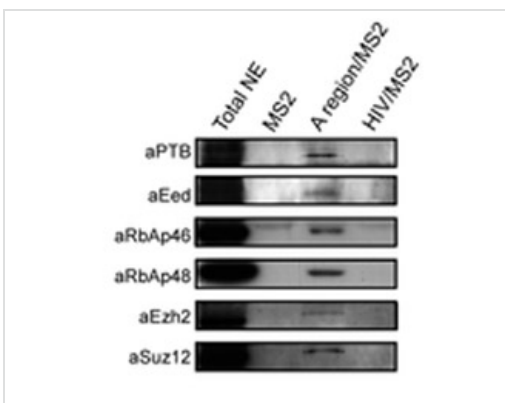
Developed using the ECL technique

Performed under reducing conditions.

**Predicted band size** : 47.5 kDa

**Exposure time** : 10 minutes

*This image is courtesy of an anonymous Abreview*



Western blot - Anti-RbAp48 antibody [11G10] (ab488)

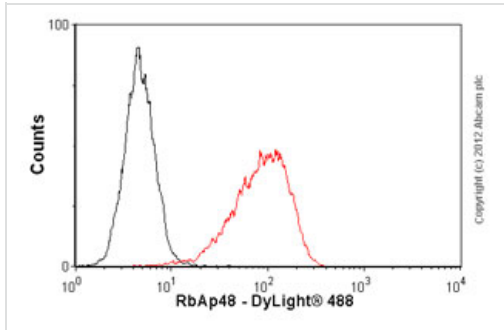
Image from S Mænner et al, PLoS Biol 8:e1000276 (2010), Fig 9.

**Predicted band size** : 47.5 kDa

*Image from S Mænner et al, PLoS Biol 8:e1000276 (2010), Fig 9.*

ab488 used in Western Blot of nuclear extract prepared from female mouse ES cells.

Western blot assays using antibodies specific for the PTB, Suz12, RbAp46, RbAp48 (ab488), Eed, and Ezh2 protein were used to evaluate the relative amounts of these proteins in the purified complexes formed with the various RNAs.



Flow Cytometry - Anti-RbAp48 antibody [11G10]  
(ab488)

Overlay histogram showing HeLa cells stained with ab488 (red line). The cells were fixed with 80% methanol (5 min) and then permeabilized with 0.1% PBS-Tween for 20 min. The cells were then incubated in 1x PBS / 10% normal goat serum / 0.3M glycine to block non-specific protein-protein interactions followed by the antibody (ab488, 1 µg/1x10<sup>6</sup> cells) for 30 min at 22°C. The secondary antibody used was DyLight® 488 goat anti-mouse IgG (H+L) (ab96879) at 1/500 dilution for 30 min at 22°C. Isotype control antibody (black line) was mouse IgG2b [PLPV219] (ab91366, 2 µg/1x10<sup>6</sup> cells) used under the same conditions. Acquisition of >5,000 events was performed.

**Please note:** All products are "FOR RESEARCH USE ONLY AND ARE NOT INTENDED FOR DIAGNOSTIC OR THERAPEUTIC USE"

### Our Abpromise to you: Quality guaranteed and expert technical support

- Replacement or refund for products not performing as stated on the datasheet
- Valid for 12 months from date of delivery
- Response to your inquiry within 24 hours
- We provide support in Chinese, English, French, German, Japanese and Spanish
- Extensive multi-media technical resources to help you
- We investigate all quality concerns to ensure our products perform to the highest standards

If the product does not perform as described on this datasheet, we will offer a refund or replacement. For full details of the Abpromise, please visit <http://www.abcam.co.jp/abpromise> or contact our technical team.

### Terms and conditions

- Guarantee only valid for products bought direct from Abcam or one of our authorized distributors