


Product datasheet

Anti-JNK1 antibody ab47561

画像数 1

製品の概要

製品名	Anti-JNK1 antibody
製品の詳細	Rabbit polyclonal to JNK1
由来種	Rabbit
アプリケーション	適用あり: IHC-P, ELISA
種交差性	交差種: Human 交差が予測される動物種: Mouse, Rat 
免疫原	Synthetic non-phosphopeptide derived from Human JNK1 around the phosphorylation site of threonine 183 (MMTpPY).
ポジティブ・コントロール	Human breast carcinoma tissue.

製品の特性

製品の状態	Liquid
保存方法	Shipped at 4°C. Store at -20°C. Stable for 12 months at -20°C.
バッファー	Preservative: 0.02% Sodium Azide Constituents: 50% Glycerol, PBS, 150mM Sodium chloride, pH 7.4
精製度	Immunogen affinity purified
ポリ/モノ	ポリクローナル
アイソタイプ	IgG

アプリケーション

Our [Abpromise guarantee](#) covers the use of **ab47561** in the following tested applications.

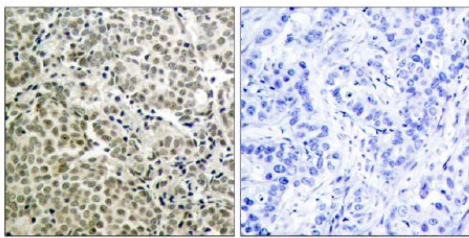
The application notes include recommended starting dilutions; optimal dilutions/concentrations should be determined by the end user.

アプリケーション	Abreviews	特記事項
IHC-P		Use at an assay dependent concentration.
ELISA		1/10000.

ターゲット情報

機能	<p>Responds to activation by environmental stress and pro-inflammatory cytokines by phosphorylating a number of transcription factors, primarily components of AP-1 such as JUN, JDP2 and ATF2 and thus regulates AP-1 transcriptional activity. In T-cells, JNK1 and JNK2 are required for polarized differentiation of T-helper cells into Th1 cells (By similarity). Phosphorylates heat shock factor protein 4 (HSF4).</p> <p>JNK1 isoforms display different binding patterns: beta-1 preferentially binds to c-Jun, whereas alpha-1, alpha-2, and beta-2 have a similar low level of binding to both c-Jun or ATF2. However, there is no correlation between binding and phosphorylation, which is achieved at about the same efficiency by all isoforms.</p>
配列類似性	<p>Belongs to the protein kinase superfamily. CMGC Ser/Thr protein kinase family. MAP kinase subfamily.</p> <p>Contains 1 protein kinase domain.</p>
ドメイン	<p>The TXY motif contains the threonine and tyrosine residues whose phosphorylation activates the MAP kinases.</p>
翻訳後修飾	<p>Dually phosphorylated on Thr-183 and Tyr-185, which activates the enzyme.</p>

画像



ab47561, at 1/50 dilution, staining JNK1 in Human breast carcinoma by Immunohistochemistry, paraffin embedded tissue. Left panel: no blocking peptide; right panel: with 1ug/ml blocking peptide.

Immunohistochemistry (Paraffin-embedded sections)
- JNK1 antibody (ab47561)

Please note: All products are "FOR RESEARCH USE ONLY AND ARE NOT INTENDED FOR DIAGNOSTIC OR THERAPEUTIC USE"

Our Abpromise to you: Quality guaranteed and expert technical support

- Replacement or refund for products not performing as stated on the datasheet
- Valid for 12 months from date of delivery
- Response to your inquiry within 24 hours
- We provide support in Chinese, English, French, German, Japanese and Spanish
- Extensive multi-media technical resources to help you
- We investigate all quality concerns to ensure our products perform to the highest standards

If the product does not perform as described on this datasheet, we will offer a refund or replacement. For full details of the Abpromise, please visit <http://www.abcam.co.jp/abpromise> or contact our technical team.

Terms and conditions

- Guarantee only valid for products bought direct from Abcam or one of our authorized distributors