


Product datasheet

Anti-C5 / C5a antibody ab46151

画像数 2

製品の概要

製品名	Anti-C5 / C5a antibody
製品の詳細	Rabbit polyclonal to C5 / C5a
由来種	Rabbit
アプリケーション	適用あり: WB
種交差性	交差種: Human 交差が予測される動物種: Pig 
免疫原	Synthetic peptide conjugated to KLH derived from within residues 900 - 1000 of Human C5/ C5b.Immunogen の所有権に関して(Peptide available as <a href="#">ab46166</a> .)
ポジティブ・コントロール	This antibody gave a positive signal in purified human Complement C5 protein.
特記事項	This antibody binds specifically to the alpha / alpha' chain of C5, which forms part of C5b

製品の特性

製品の状態	Liquid
保存方法	Shipped at 4°C. Store at +4°C short term (1-2 weeks). Upon delivery aliquot. Store at -20°C or -80°C. Avoid freeze / thaw cycle.
バッファー	Preservative: 0.02% Sodium Azide Constituents: 1% BSA, PBS, pH 7.4
精製度	Immunogen affinity purified
一次抗体 備考	This antibody binds specifically to the alpha / alpha' chain of C5, which forms part of C5b
ポリ/モノ	ポリクローナル
アイソタイプ	IgG

アプリケーション

Our [Abpromise guarantee](#) covers the use of **ab46151** in the following tested applications.

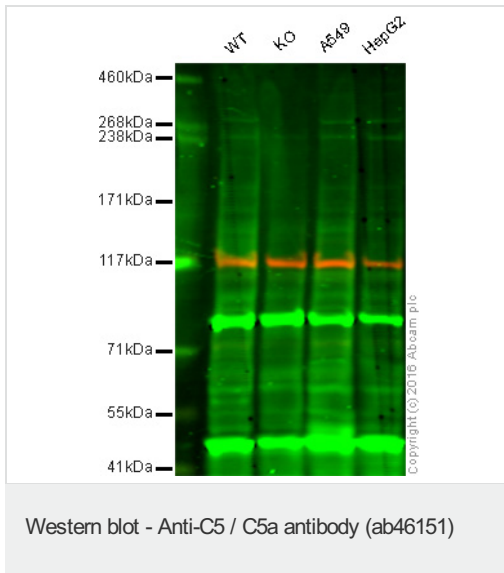
The application notes include recommended starting dilutions; optimal dilutions/concentrations should be determined by the end user.

アプリケーション	Abreviews	特記事項
WB		Use a concentration of 1 µg/ml. Detects a band of approximately 115 kDa (predicted molecular weight: 188 kDa).

## ターゲット情報

<b>機能</b>	<p>Activation of C5 by a C5 convertase initiates the spontaneous assembly of the late complement components, C5-C9, into the membrane attack complex. C5b has a transient binding site for C6. The C5b-C6 complex is the foundation upon which the lytic complex is assembled. Derived from proteolytic degradation of complement C5, C5 anaphylatoxin is a mediator of local inflammatory process. It induces the contraction of smooth muscle, increases vascular permeability and causes histamine release from mast cells and basophilic leukocytes. C5a also stimulates the locomotion of polymorphonuclear leukocytes (chemokinesis) and direct their migration toward sites of inflammation (chemotaxis).</p>
<b>関連疾患</b>	<p>Complement component 5 deficiency  An association study of C5 haplotypes and genotypes in individuals with chronic hepatitis C virus infection shows that individuals homozygous for the C5_1 haplotype have a significantly higher stage of liver fibrosis than individuals carrying at least 1 other allele (PubMed:15995705).</p>
<b>配列類似性</b>	<p>Contains 1 anaphylatoxin-like domain.  Contains 1 NTR domain.</p>
<b>細胞内局在</b>	<p>Secreted.</p>

## 画像



**Lane 1:** Wild type HAP1 whole cell lysate (20 µg)

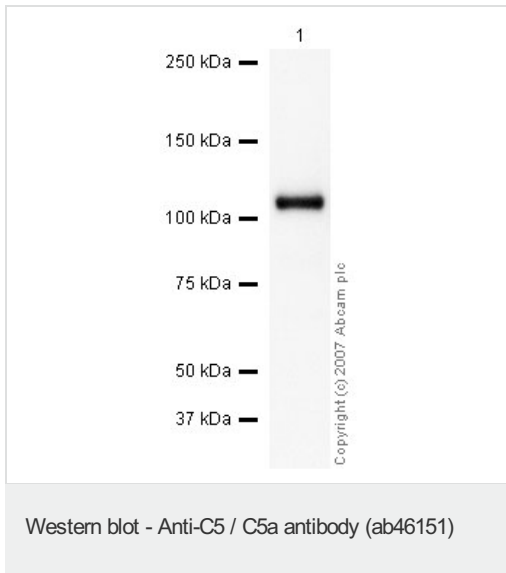
**Lane 2:** C5 knockout HAP1 whole cell lysate (20 µg)

**Lane 3:** A549 whole cell lysate (20 µg)

**Lane 4:** HepG2 whole cell lysate (20 µg)

**Lanes 1 - 4:** Merged signal (red and green).  
Green - ab46151 observed at 188 kDa. Red - loading control, [ab18058](#), observed at 130 kDa.

ab46151 was shown not to specifically react with C5 when C5 knockout samples were used. Wild-type and C5 knockout samples were subjected to SDS-PAGE. Ab46151 and [ab18058](#) (Mouse anti Vinculin loading control) were incubated overnight at 4°C at 1 µg/mL and 1/10000 dilution respectively. Blots were developed with Goat anti-Rabbit IgG H&L (IRDye® 800CW) [ab216773](#) and Goat anti-Mouse IgG H&L (IRDye® 680RD) [ab216776](#) secondary antibodies at 1/10000 dilution for 1 hour at room temperature before imaging.



Anti-C5 / C5a antibody (ab46151) at 1 µg/ml +  
Human Complement C5 Protein at 0.1 µg

#### Secondary

Goat polyclonal to Rabbit IgG - H&L - Pre-Adsorbed (HRP) at 1/3000 dilution

Performed under reducing conditions.

**Predicted band size:** 188 kDa

**Observed band size:** 115 kDa

Complement component C5 protein is comprised of an alpha and beta chain which have predicted molecular weights of 115 kDa and 75 kDa respectively. ab46151 specifically detects the C5 alpha chain.

**Please note:** All products are "FOR RESEARCH USE ONLY AND ARE NOT INTENDED FOR DIAGNOSTIC OR THERAPEUTIC USE"

#### Our Abpromise to you: Quality guaranteed and expert technical support

- Replacement or refund for products not performing as stated on the datasheet
- Valid for 12 months from date of delivery
- Response to your inquiry within 24 hours
- We provide support in Chinese, English, French, German, Japanese and Spanish
- Extensive multi-media technical resources to help you
- We investigate all quality concerns to ensure our products perform to the highest standards

If the product does not perform as described on this datasheet, we will offer a refund or replacement. For full details of the Abpromise, please visit <http://www.abcam.co.jp/abpromise> or contact our technical team.

#### Terms and conditions

- Guarantee only valid for products bought direct from Abcam or one of our authorized distributors