

## Product datasheet

# Anti-Estrogen Related Receptor alpha antibody [H5844] ab41868

2 References [画像数 2](#)

### 製品の概要

製品名	Anti-Estrogen Related Receptor alpha antibody [H5844]
製品の詳細	Mouse monoclonal [H5844] to Estrogen Related Receptor alpha
由来種	Mouse
特異性	This antibody does not recognize ERR beta and gamma.
アプリケーション	<b>適用あり:</b> WB, ELISA, IP, IHC-P
種交差性	<b>交差種:</b> Rat, Human
免疫原	Recombinant fragment: ACKAFFKRTIQGSIEYSCPA SNECEITKRR RKACQACRFT KCLRVGMLKE GVRLDVRVGG RQKYKRRPEV DPLP, corresponding to amino acids 98-171 of Human Estrogen Related Receptor alpha <a href="#">Run BLAST with ExPASy</a> <a href="#">Run BLAST with NCBI</a>
ポジティブ・コントロール	Rat Cerebrum and Human Heart Myocardium.

### 製品の特性

製品の状態	Liquid
保存方法	Shipped at 4°C. Store at +4°C short term (1-2 weeks). Store at -20°C or -80°C. Avoid freeze / thaw cycle.
バッファー	Physiological saline. Preservative: 0.1% Sodium Azide
特記事項(精製)	Purified from ascites by ammonium sulfate fractionation.
ポリ/モノ	モノクローナル
クローン名	H5844
アイソタイプ	IgG2a

### アプリケーション

Our [Abpromise guarantee](#) covers the use of **ab41868** in the following tested applications.

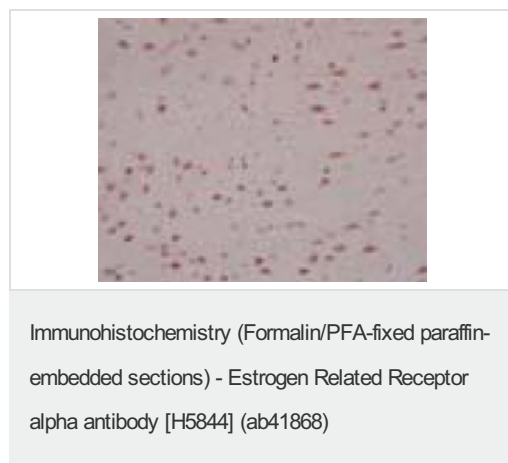
The application notes include recommended starting dilutions; optimal dilutions/concentrations should be determined by the end user.

アプリケーション	Abreviews	特記事項
WB		Use a concentration of 1 µg/ml. Predicted molecular weight: 55 kDa.
ELISA		Use a concentration of 0.2 µg/ml.
IP		Use at an assay dependent concentration.
IHC-P		Use a concentration of 1 - 10 µg/ml.

## ターゲット情報

<b>機能</b>	Binds to an ERR-alpha response element (ERRE) containing a single consensus half-site, 5'-TNAAGGTCA-3'. Can bind to the medium-chain acyl coenzyme A dehydrogenase (MCAD) response element NRRE-1 and may act as an important regulator of MCAD promoter. Binds to the C1 region of the lactoferrin gene promoter. Requires dimerization and the coactivator, PGC-1A, for full activity. The ERRalpha/PGC1alpha complex is a regulator of energy metabolism.
<b>配列類似性</b>	Belongs to the nuclear hormone receptor family. NR3 subfamily. Contains 1 nuclear receptor DNA-binding domain.
<b>翻訳後修飾</b>	Phosphorylation on Ser-19 enhances sumoylation on Lys-14 increasing repression of transcriptional activity. Sumoylated by SUMO2. Main site is Lys-14 which is enhanced by phosphorylation on Ser-19, cofactor activation, and by interaction with PIAS4. Sumoylation enhances repression of transcriptional activity, but has no effect on subcellular location nor on DNA binding.
<b>細胞内局在</b>	Nucleus.

## 画像



ab41868 staining estrogen related receptor alpha in Rat Cerebrum (1-10 ug/mL) by immunohistochemistry, formalin-fixed paraffin embedded sections.



ab41868 staining estrogen related receptor alpha in Human Heart Myocardium (1-10 ug/mL) by immunohistochemistry, formalin-fixed paraffin embedded sections.

Immunohistochemistry (Formalin/PFA-fixed paraffin-embedded sections) - Estrogen Related Receptor alpha antibody [H5844] (ab41868)

**Please note:** All products are "FOR RESEARCH USE ONLY AND ARE NOT INTENDED FOR DIAGNOSTIC OR THERAPEUTIC USE"

### **Our Abpromise to you: Quality guaranteed and expert technical support**

---

- Replacement or refund for products not performing as stated on the datasheet
- Valid for 12 months from date of delivery
- Response to your inquiry within 24 hours
  
- We provide support in Chinese, English, French, German, Japanese and Spanish
- Extensive multi-media technical resources to help you
- We investigate all quality concerns to ensure our products perform to the highest standards

If the product does not perform as described on this datasheet, we will offer a refund or replacement. For full details of the Abpromise, please visit <http://www.abcam.co.jp/abpromise> or contact our technical team.

### **Terms and conditions**

---

- Guarantee only valid for products bought direct from Abcam or one of our authorized distributors