

Product datasheet

Anti-CRY2 antibody ab38872

★★★★★ 2 Abreviews 5 References 画像数 3

製品の概要

製品名	Anti-CRY2 antibody
製品の詳細	Rabbit polyclonal to CRY2
由来種	Rabbit
アプリケーション	適用あり: ICC/IF, ELISA, WB, IHC-P
種交差性	交差種: Mouse, Human
免疫原	Generated from rabbits immunized with a KLH conjugated synthetic peptide between 564~593 amino acids from the C-terminal region of human CRY2.
ポジティブ・コントロール	Mouse liver tissue lysate, Human breast carcinoma.

製品の特性

製品の状態	Liquid
保存方法	Shipped at 4°C. Store at +4°C short term (1-2 weeks). Upon delivery aliquot. Store at -20°C long term.
バッファー	Preservative: 0.09% Sodium Azide Constituents: PBS
精製度	Protein G purified
特記事項 (精製)	This antibody was purified through a protein G column and eluted out with both high and low pH buffers. It was neutralized immediately after elution, followed by dialysis against PBS.
ポリ/モノ	ポリクローナル
アイソタイプ	IgG

アプリケーション

Our [Abpromise guarantee](#) covers the use of **ab38872** in the following tested applications.

The application notes include recommended starting dilutions; optimal dilutions/concentrations should be determined by the end user.

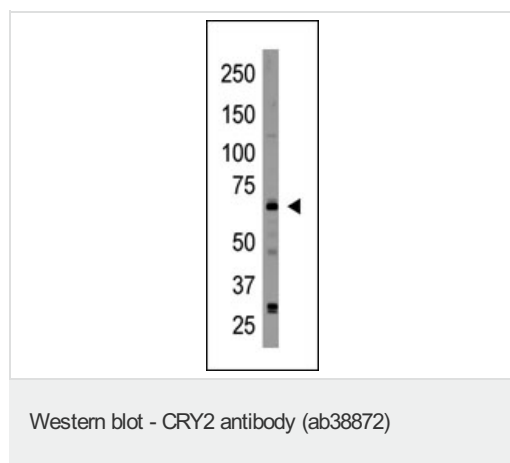
アプリケーション	Abreviews	特記事項
ICC/IF		Use a concentration of 5 µg/ml.

アプリケーション	Abreviews	特記事項
ELISA		1/1000.
WB	★★★★★	1/100 - 1/500. Detects a band of approximately 67 kDa (predicted molecular weight: 67 kDa).
IHC-P		1/50 - 1/100.

ターゲット情報

機能	Blue light-dependent regulator of the circadian feedback loop. Inhibits CLOCK NPAS2-ARNTL E box-mediated transcription. Acts, in conjunction with CRY2, in maintaining period length and circadian rhythmicity. Has no photolyase activity. Capable of translocating circadian clock core proteins such as PER proteins to the nucleus. May inhibit CLOCK NPAS2-ARNTL transcriptional activity through stabilizing the unphosphorylated form of ARNTL.
組織特異性	Expressed in all tissues examined including fetal brain, fibroblasts, heart, brain, placenta, lung, liver, skeletal muscle, kidney, pancreas, spleen, thymus, prostate, testis, ovary, small intestine, colon and leukocytes. Highest levels in heart and skeletal muscle.
配列類似性	Belongs to the DNA photolyase class-1 family. Contains 1 DNA photolyase domain.
翻訳後修飾	Phosphorylation on Ser-266 by MAPK is important for the inhibition of CLOCK-ARNTL-mediated transcriptional activity. Phosphorylation by CSKNE requires interaction with PER1 or PER2. Ubiquitinated by the SCF(FBXL3) and SCF(FBXL21) complex, leading to its degradation.
細胞内局在	Cytoplasm. Nucleus. Translocated to the nucleus through interaction with other Clock proteins such as PER2 or ARNTL.

画像

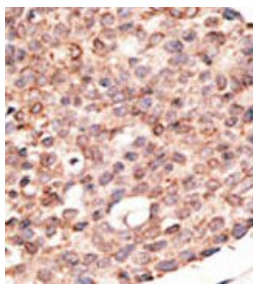


Anti-CRY2 antibody (ab38872) at 1/100 dilution + Mouse liver tissue lysate

Predicted band size: 67 kDa

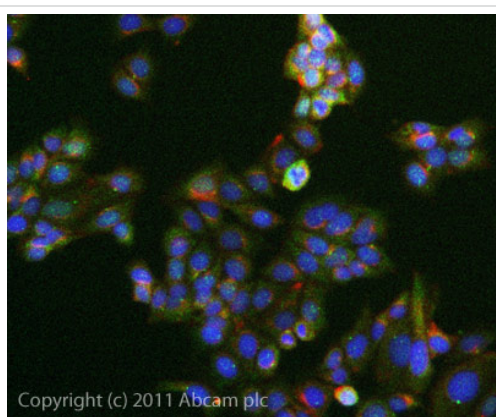
Observed band size: 67 kDa

Additional bands at: 30 kDa, 48 kDa. We are unsure as to the identity of these extra bands.



Immunohistochemistry (Formalin/PFA-fixed paraffin-embedded sections) - CRY2 antibody (ab38872)

ab38872, at 1/50 dilution, staining CRY2 in Human breast carcinoma by Immunohistochemistry, Formalin fixed and Paraffin embedded tissue. ab38872 was peroxidase-conjugated to the secondary antibody, followed by AEC staining. This data demonstrates the use of this antibody for immunohistochemistry; clinical relevance has not been evaluated.



Immunocytochemistry/ Immunofluorescence-CRY2 antibody(ab38872)

ICC/IF image of ab38872 stained MCF7 cells. The cells were 100% methanol fixed (5 min) and then incubated in 1%BSA / 10% normal goat serum / 0.3M glycine in 0.1% PBS-Tween for 1h to permeabilise the cells and block non-specific protein-protein interactions. The cells were then incubated with the antibody (ab38872, 5µg/ml) overnight at +4°C. The secondary antibody (green) was [ab96899](#), DyLight® 488 goat anti-rabbit IgG (H+L) used at a 1/250 dilution for 1h. Alexa Fluor® 594 WGA was used to label plasma membranes (red) at a 1/200 dilution for 1h. DAPI was used to stain the cell nuclei (blue) at a concentration of 1.43µM.

Please note: All products are "FOR RESEARCH USE ONLY AND ARE NOT INTENDED FOR DIAGNOSTIC OR THERAPEUTIC USE"

Our Abpromise to you: Quality guaranteed and expert technical support

- Replacement or refund for products not performing as stated on the datasheet
- Valid for 12 months from date of delivery
- Response to your inquiry within 24 hours
- We provide support in Chinese, English, French, German, Japanese and Spanish
- Extensive multi-media technical resources to help you
- We investigate all quality concerns to ensure our products perform to the highest standards

If the product does not perform as described on this datasheet, we will offer a refund or replacement. For full details of the Abpromise, please visit <http://www.abcam.co.jp/abpromise> or contact our technical team.

Terms and conditions

- Guarantee only valid for products bought direct from Abcam or one of our authorized distributors