

## Product datasheet

# Anti-Myostatin Propeptide antibody [4B9] ab37257

### 画像数 1

#### 製品の概要

製品名	Anti-Myostatin Propeptide antibody [4B9]
製品の詳細	Mouse monoclonal [4B9] to Myostatin Propeptide
由来種	Mouse
アプリケーション	<b>適用あり:</b> ELISA, WB, IHC-P, IHC-Fr, ICC/IF
種交差性	<b>交差種:</b> Human
免疫原	Recombinant protein, corresponding to amino acids 24-266 of Human Myostatin Propeptide (Human myostatin propeptide without signaling sequence). The recombinant protein contains 5 additional amino acid residues: 2 at the N-terminal end (MG) and 2 at the C-terminal end (KLN).

#### ポジティブ・コントロール

ウェスタン・ブロット用ポジティブコントロール  
[Recombinant Human Myostatin Propeptide protein](#) >

ICC/IF: Malme-3M cell line

#### 製品の特性

製品の状態	Liquid
保存方法	Shipped at 4°C. Upon delivery aliquot. Store at -20°C long term. Avoid freeze / thaw cycle.
バッファー	Preservative: None Constituents: 0.1M Sodium chloride, 0.05M PBS, pH 7.2
精製度	Protein G purified
ポリ/モノ	モノクローナル
クローン名	4B9
アイソタイプ	IgG2b

#### アプリケーション

Our [Abpromise guarantee](#) covers the use of **ab37257** in the following tested applications.

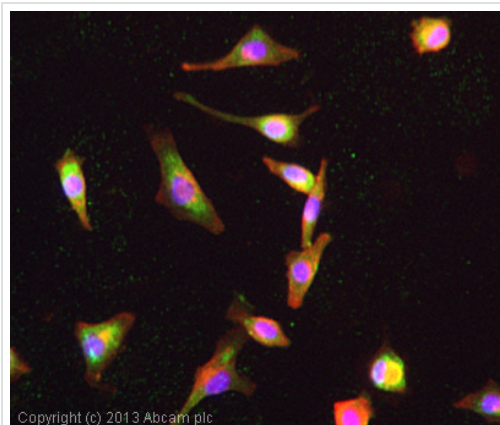
The application notes include recommended starting dilutions; optimal dilutions/concentrations should be determined by the end user.

アプリケーション	Abreviews	特記事項
ELISA		Use at an assay dependent concentration.
WB		Use a concentration of 1 µg/ml. Predicted molecular weight: 43 kDa.
IHC-P		1/200.
IHC-Fr		1/50.
ICC/IF		Use a concentration of 10 µg/ml.

## ターゲット情報

機能	Acts specifically as a negative regulator of skeletal muscle growth.
関連疾患	Defects in MSTN are the cause of muscle hypertrophy (MSLHP) [MIM:614160]. MSLHP is a condition characterized by increased muscle bulk and strength. Affected individuals are exceptionally strong.
配列類似性	Belongs to the TGF-beta family.
細胞内局在	Secreted.

## 画像



Immunocytochemistry/ Immunofluorescence - Anti-Myostatin Propeptide antibody [4B9] - Azide free (ab37257)

ICC/IF image of ab37257 stained Malme-3M cells. The cells were 4% paraformaldehyde fixed (10 min) and then incubated in 1%BSA / 10% normal goat serum / 0.3M glycine in 0.1% PBS-Tween for 1h to permeabilise the cells and block non-specific protein-protein interactions. The cells were then incubated with the antibody (ab37257, 10µg/ml) overnight at +4°C. The secondary antibody (green) was [ab96879](#), DyLight® 488 goat anti-mouse IgG (H+L) used at a 1/250 dilution for 1h. Alexa Fluor® 594 WGA was used to label plasma membranes (red) at a 1/200 dilution for 1h. DAPI was used to stain the cell nuclei (blue) at a concentration of 1.43µM.

**Please note:** All products are "FOR RESEARCH USE ONLY AND ARE NOT INTENDED FOR DIAGNOSTIC OR THERAPEUTIC USE"

## Our Abpromise to you: Quality guaranteed and expert technical support

- Replacement or refund for products not performing as stated on the datasheet

- Valid for 12 months from date of delivery
- Response to your inquiry within 24 hours
  
- We provide support in Chinese, English, French, German, Japanese and Spanish
- Extensive multi-media technical resources to help you
- We investigate all quality concerns to ensure our products perform to the highest standards

If the product does not perform as described on this datasheet, we will offer a refund or replacement. For full details of the Abpromise, please visit <http://www.abcam.co.jp/abpromise> or contact our technical team.

### **Terms and conditions**

---

- Guarantee only valid for products bought direct from Abcam or one of our authorized distributors