

## Product datasheet

# Anti-PREB antibody ab3422

★★★★☆ 1 Abreviews [画像数 2](#)

### 製品の概要

製品名	Anti-PREB antibody
製品の詳細	Rabbit polyclonal to PREB
由来種	Rabbit
特異性	Detects recombinant mouse PREB (Prolactin Regulatory Element Binding protein).
アプリケーション	<b>適用あり:</b> WB
種交差性	<b>交差種:</b> Mouse
免疫原	Recombinant fragment corresponding to Mouse PREB.

### 製品の特性

製品の状態	Liquid
保存方法	Shipped at 4°C. Store at +4°C short term (1-2 weeks). Upon delivery aliquot. Store at -20°C or -80°C. Avoid freeze / thaw cycle.
バッファー	Constituent: 99% PBS
精製度	IgG fraction
ポリ/モノ	ポリクローナル
アイソタイプ	IgG

### アプリケーション

Our [Abpromise guarantee](#) covers the use of **ab3422** in the following tested applications.

The application notes include recommended starting dilutions; optimal dilutions/concentrations should be determined by the end user.

アプリケーション	Abreviews	特記事項
WB		1/500. Detects a band of approximately 45 kDa (predicted molecular weight: 45 kDa).

### ターゲット情報

**機能** Was first identified based on its probable role in the regulation of pituitary gene transcription.

Binds to the prolactin gene (PRL) promoter and seems to activate transcription (By similarity). Guanine nucleotide exchange factor that activates SARA2. Required for the formation of COPII transport vesicles from the ER.

組織特異性

Ubiquitous.

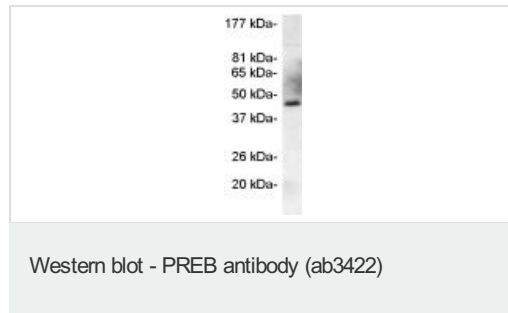
配列類似性

Contains 3 WD repeats.

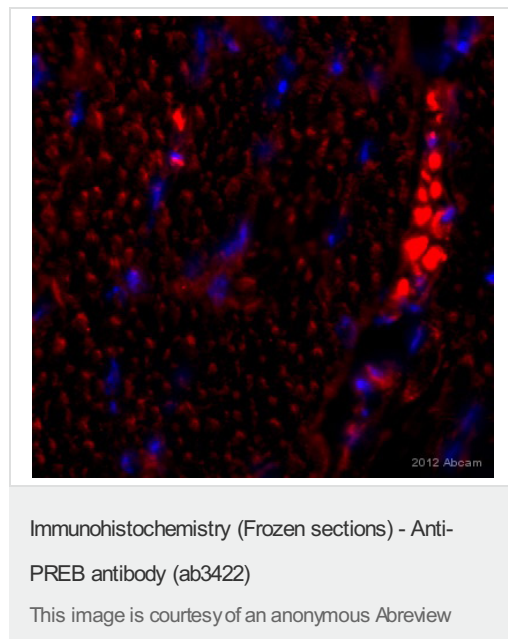
細胞内局在

Nucleus. Endoplasmic reticulum membrane.

## 画像



Western blot detection of recombinant mouse PREB using ab3422.



ab3422 staining PREB in mouse skeletal tissue sections by Immunohistochemistry (Frozen sections)

Tissue was fixed with acetone, blocked with 10% serum for 1 hour at 22°C and permeabilized with 1% Triton X-100. Samples were incubated with primary antibody (1/50 in 10% serum) for 12 hours at 4°C. A Rhodamine red-x conjugated donkey anti-rabbit IgG polyclonal (1/200) was used as the secondary antibody.

**Please note:** All products are "FOR RESEARCH USE ONLY AND ARE NOT INTENDED FOR DIAGNOSTIC OR THERAPEUTIC USE"

## Our Abpromise to you: Quality guaranteed and expert technical support

- Replacement or refund for products not performing as stated on the datasheet
- Valid for 12 months from date of delivery
- Response to your inquiry within 24 hours
- We provide support in Chinese, English, French, German, Japanese and Spanish
- Extensive multi-media technical resources to help you
- We investigate all quality concerns to ensure our products perform to the highest standards

If the product does not perform as described on this datasheet, we will offer a refund or replacement. For full details of the Abpromise, please visit <http://www.abcam.co.jp/abpromise> or contact our technical team.

## Terms and conditions

---

- Guarantee only valid for products bought direct from Abcam or one of our authorized distributors