

Product datasheet

Anti-Histone H1 (phospho S1 + T3) antibody ab32979

画像数 2

製品の概要

製品名 Anti-Histone H1 (phospho S1 + T3) antibody  
 製品の詳細 Rabbit polyclonal to Histone H1 (phospho S1 + T3)

**i** This product is a **fast track antibody**. It has been affinity purified and shows high titre values against the immunizing peptide by ELISA. [Read the terms of use »](#)

由来種 Rabbit

種交差性 交差が予測される動物種: Mouse, Rat, Cow, Human **!**

免疫原 Synthetic peptide conjugated to KLH derived from within residues 1 - 100 of Human Histone H1. Immunogen の所有権に関して (Peptide available as [ab36684](#).)

製品の特性

製品の状態 Liquid  
 保存方法 Shipped at 4°C. Store at +4°C short term (1-2 weeks). Upon delivery aliquot. Store at -20°C or -80°C. Avoid freeze / thaw cycle.  
 バッファー Preservative: 0.02% Sodium Azide  
 Constituents: 1% BSA, PBS, pH 7.4  
 精製度 Immunogen affinity purified  
 ポリ/モノ ポリクローナル  
 アイソタイプ IgG

アプリケーション

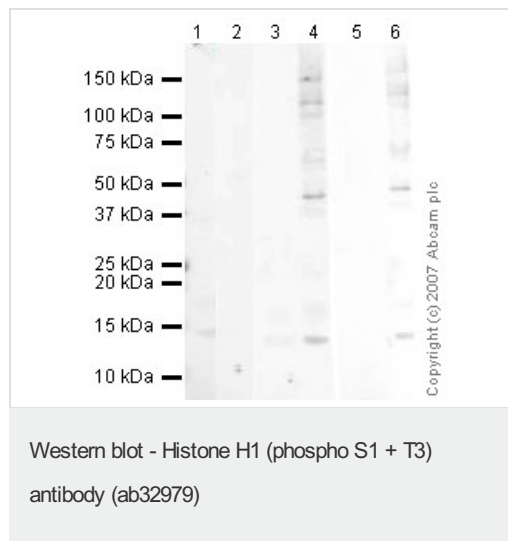
追加情報 This antibody gave a positive result in ELISA against the immunizing peptide ([ab36684](#)). It gave a negative result in ELISA against the non-modified equivalent peptide ([ab36686](#)). This indicates that it is specific for the modified peptide.  
 See figure below.  
 Not yet tested in other applications.  
 Optimal dilutions/concentrations should be determined by the end user.

## ターゲット情報

機能	Histones H1 are necessary for the condensation of nucleosome chains into higher order structures.
配列類似性	Belongs to the histone H1/H5 family. Contains 1 H15 (linker histone H1/H5 globular) domain.
翻訳後修飾	Acetylated at Lys-26. Deacetylated at Lys-26 by SIRT1.
細胞内局在	Nucleus. Chromosome.

## 画像

This Fast-Track antibody is not yet fully characterised. These images represent **inconclusive preliminary data**.



**All lanes** : Anti-Histone H1 (phospho S1 + T3) antibody (ab32979) at 1 µg/ml

**Lane 1** : Calf Thymus Histone Preparation at 0.5 µg

**Lane 2** : Calf Thymus Histone Preparation at 0.5 µg with Human Histone H1 (phospho S1 + T3) peptide (ab36684) at 1 µg/ml

**Lane 3** : Calf Thymus Histone Preparation at 0.5 µg with Human Histone H1 peptide (ab36686) at 1 µg/ml

**Lane 4** : HeLa Histone Preparation Nuclear Lysate - Colcemid-treated at 2.5 µg

**Lane 5** : HeLa Histone Preparation Nuclear Lysate - Colcemid-treated at 2.5 µg with Human Histone H1 (phospho S1 + T3) peptide (ab36684) at 1 µg/ml

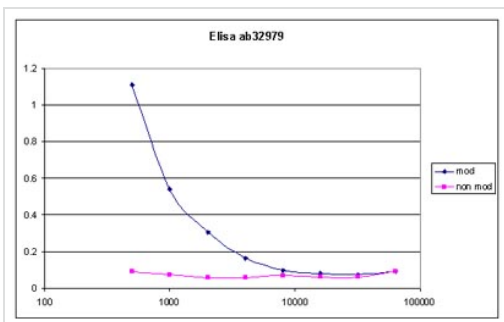
**Lane 6** : HeLa Histone Preparation Nuclear Lysate - Colcemid-treated at 2.5 µg with Human Histone H1 peptide (ab36686) at 1 µg/ml

### Secondary

**All lanes** : IRDye 680 Conjugated Goat Anti-Rabbit IgG (H+L) at 1/10000 dilution

Performed under reducing conditions.

**Predicted band size:** 32-36 kDa



ELISA - Histone H1 (phospho S1 + T3) antibody  
(ab32979)

This antibody gave a positive result in ELISA against the immunizing peptide [ab36684](#) (blue line). It gave a negative result in ELISA against the non-modified equivalent peptide [ab36686](#) (purple line). This indicates that it is specific for the modified peptide.

**Please note:** All products are "FOR RESEARCH USE ONLY AND ARE NOT INTENDED FOR DIAGNOSTIC OR THERAPEUTIC USE"

### Terms and conditions

- Guarantee only valid for products bought direct from Abcam or one of our authorized distributors