

Product datasheet

Anti-ITK antibody ab32113

2 References [画像数 2](#)

製品の概要

製品名	Anti-ITK antibody
製品の詳細	Rabbit polyclonal to ITK
アプリケーション	適用あり: WB, IHC-P 適用なし: Flow Cyt or IP
種交差性	交差種: Mouse, Rat, Human
免疫原	A synthetic peptide corresponding to residues near the C terminus of human Emtk/ITK/Tsk.
ポジティブ・コントロール	WB: K562 and A431 cell lysates. IHC-P: Normal lymph node tissue.

製品の特性

製品の状態	Liquid
保存方法	Shipped at 4°C. Upon delivery aliquot and store at -20°C. Avoid freeze / thaw cycles.
バッファー	PBS 49%, Sodium azide 0.01%, Glycerol 50%, BSA 0.05%
精製度	Protein A purified
ポリ/モノ	ポリクローナル
アイソタイプ	IgG

アプリケーション

Our [Abpromise guarantee](#) covers the use of **ab32113** in the following tested applications.

The application notes include recommended starting dilutions; optimal dilutions/concentrations should be determined by the end user.

アプリケーション	Abreviews	特記事項
WB		
IHC-P		

追加情報

IHC-P: 1/50 - 1/100.

WB: 1/1000. Detects a band of approximately 68 kDa (predicted molecular weight: 72 kDa).

Is unsuitable for FACS or IP.

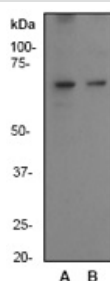
Not yet tested in other applications.

Optimal dilutions/concentrations should be determined by the end user.

ターゲット情報

機能	Plays a role in T-cell proliferation and differentiation.
組織特異性	T-cell lines and natural killer cell lines.
関連疾患	Defects in ITK are the cause of lymphoproliferative syndrome EBV-associated autosomal type 1 (LPSA1) [MIM:613011]. LPSA1 is a rare immunodeficiency characterized by extreme susceptibility to infection with Epstein-Barr virus (EBV). Inadequate immune response to EBV can have a fatal outcome. Clinical features include splenomegaly, lymphadenopathy, anemia, thrombocytopenia, pancytopenia, recurrent infections. There is an increased risk for lymphoma.
配列類似性	Belongs to the protein kinase superfamily. Tyr protein kinase family. TEC subfamily. Contains 1 Btk-type zinc finger. Contains 1 PH domain. Contains 1 protein kinase domain. Contains 1 SH2 domain. Contains 1 SH3 domain.
細胞内局在	Cell membrane. Localizes to cell surface receptors in the plasma membrane after stimulation with respective receptors (TCR, CD28, CD2) in T-cells.

画像



Western blot - ITK antibody (ab32113)

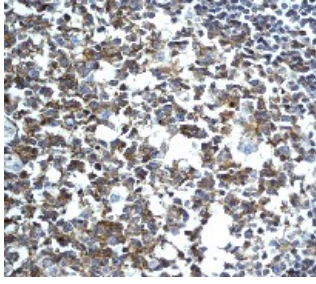
All lanes : Anti-ITK antibody (ab32113) at
1/1000 dilution

Lane 1 : K562 cell lysate

Lane 2 : A431 cell lysate

Predicted band size : 72 kDa

Observed band size : 68 kDa



Ab32113, at a 1/50 dilution, staining ITK in paraffin embedded normal lymph node tissue by Immunohistochemistry.

Immunohistochemistry (Formalin/PFA-fixed paraffin-embedded sections) - Anti-ITK antibody (ab32113)

Please note: All products are "FOR RESEARCH USE ONLY AND ARE NOT INTENDED FOR DIAGNOSTIC OR THERAPEUTIC USE"

Our Abpromise to you: Quality guaranteed and expert technical support

- Replacement or refund for products not performing as stated on the datasheet
- Valid for 12 months from date of delivery
- Response to your inquiry within 24 hours
- We provide support in Chinese, English, French, German, Japanese and Spanish
- Extensive multi-media technical resources to help you
- We investigate all quality concerns to ensure our products perform to the highest standards

If the product does not perform as described on this datasheet, we will offer a refund or replacement. For full details of the Abpromise, please visit <http://www.abcam.co.jp/abpromise> or contact our technical team.

Terms and conditions

- Guarantee only valid for products bought direct from Abcam or one of our authorized distributors