

## Product datasheet

# Anti-Cdc25C (phospho S216) antibody [E190] ab32051

RabMAb<sup>®</sup>

★★★★★ 2 Abreviews 9 References 画像数 4

### 製品の概要

|                     |   |
|---------------------|---|
| <b>製品名</b>          | Anti-Cdc25C (phospho S216) antibody [E190]  |
| <b>製品の詳細</b>        | Rabbit monoclonal [E190] to Cdc25C (phospho S216)   |
| <b>由来種</b>          | Rabbit  |
| <b>特異性</b>          | The antibody only detects Cdc25C phosphorylated on Serine 216.  |
| <b>アプリケーション</b>     | <b>適用あり:</b> WB, IP<br><b>適用なし:</b> Flow Cyt, ICC/IF or IHC   |
| <b>種交差性</b>         | <b>交差種:</b> Human   |
| <b>免疫原</b>          | A synthetic phospho-peptide corresponding to residues surrounding Ser216 of human Cdc25C  |
| <b>ポジティブ・コントロール</b> | HeLa cell lysates (intact untreated HeLa cells lysates and HeLa cells lysates treated with Alkaline Phosphatase ( blocking phosphorylation)).   |
| <b>特記事項</b>         | This product is a recombinant rabbit monoclonal antibody.<br><br>Mouse, Rat: We have preliminary internal testing data to indicate this antibody may not react with these species. Please contact us for more information.<br><br>Our RabMAb <sup>®</sup> technology is a patented hybridoma-based technology for making rabbit monoclonal antibodies. For details on our patents, please refer to <a href="#">RabMAb<sup>®</sup> patents</a> |

### 製品の特性

|               |   |
|---------------|---|
| <b>製品の状態</b>  | Liquid  |
| <b>保存方法</b>   | Shipped at 4°C. Upon delivery aliquot and store at -20°C. Avoid freeze / thaw cycles. |
| <b>バッファー</b>  | PBS 49%, Sodium azide 0.01%, Glycerol 50%, BSA 0.05%                                  |
| <b>精製度</b>    | IgG fraction  |
| <b>ポリ/モノ</b>  | モノクローナル   |
| <b>クローン名</b>  | E190  |
| <b>アイソタイプ</b> | IgG   |

### アプリケーション

Our [Abpromise guarantee](#) covers the use of **ab32051** in the following tested applications.

The application notes include recommended starting dilutions; optimal dilutions/concentrations should be determined by the end user.

| アプリケーション | Abreviews | 特記事項   |
|----------|-----------|--|
| WB       | ★★★★★     | 1/1000. Detects a band of approximately 60 kDa (predicted molecular weight: 53 kDa). |
| IP       |           | 1/30.  |

#### 追加情報

Is unsuitable for Flow Cyt, ICC/IF or IHC.

#### ターゲット情報

##### 機能

Functions as a dosage-dependent inducer in mitotic control. It is a tyrosine protein phosphatase required for progression of the cell cycle. It directly dephosphorylates CDK1 and activate its kinase activity.

##### 配列類似性

Belongs to the MPI phosphatase family.  
Contains 1 rhodanese domain.

##### 発生段階

Expressed predominantly in G2 phase.

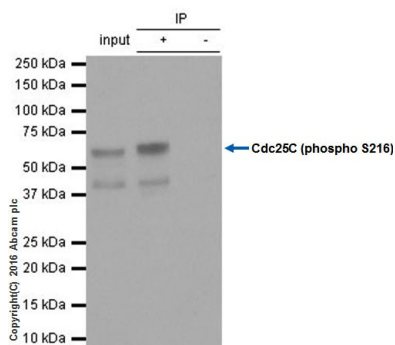
##### 翻訳後修飾

Phosphorylated by CHK1 on Ser-216. This phosphorylation creates a binding site for 14-3-3 protein and inhibits the phosphatase. Phosphorylated by PLK4.

##### 細胞内局在

Nucleus.

#### 画像



Immunoprecipitation - Anti-Cdc25C (phospho S216) antibody [E190] (ab32051)

Cdc25C (phospho S216) was immunoprecipitated from 10 $\mu$ g HEK293 (human embryonic kidney) whole cell lysate with ab32051 at 1/60 dilution (2 $\mu$ g in 0.35mg lysates). Western blot was performed from the immunoprecipitate using ab32051 at 1/200 dilution (6  $\mu$ g/ml). VeriBlot for IP (HRP) (ab131366), was used as the secondary antibody at 1/1000 dilution.

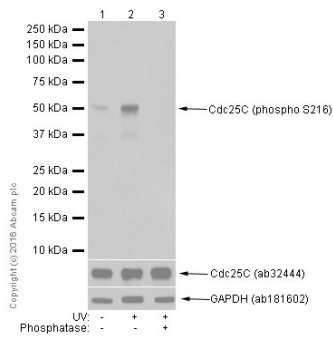
**Lane 1 (Input):** HEK293 (human embryonic kidney) treated with 60J/M2 UV, then 10%FBS for 60min whole cell lysate 10 $\mu$ g

**Lane 2 (+):** HEK293 (human embryonic kidney) treated with 60J/M2 UV, then 10%FBS for 60min whole cell lysate

**Lane 3:** Rabbit monoclonal IgG (ab172730) instead of ab32051 in HEK293 (human embryonic kidney) treated with 60J/M2 UV, then 10%FBS for 60min whole cell lysate

Exposure Time: 8 seconds

Blocking and diluting buffer and concentration: 5% NFDM/TBST.



Western blot - Anti-Cdc25C (phospho S216)  
antibody [E190] (ab32051)

**All lanes :** Anti-Cdc25C (phospho S216)  
antibody [E190] (ab32051) at 1/20000 dilution

**Lane 1 :** HEK-293 (Human epithelial cell line  
from embryonic kidney) whole cell lysates

**Lane 2 :** HEK-293 (Human epithelial cell line  
from embryonic kidney) treated with UV at  
60J/m<sup>2</sup> for 2 h. Whole cell lysates

**Lane 3 :** HEK-293 (Human epithelial cell line  
from embryonic kidney) treated with UV at  
60J/m<sup>2</sup> for 2 h. Then the membrane was  
incubated with phosphatase.

Lysates/proteins at 15 µg per lane.

### Secondary

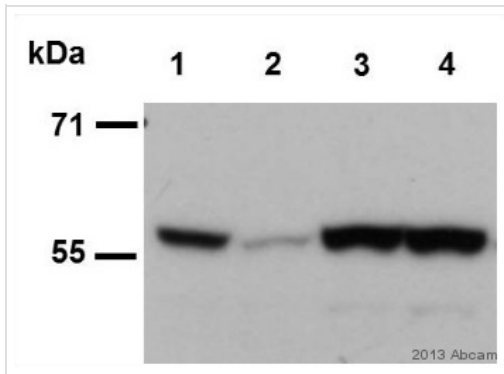
**All lanes :** Goat Anti-Rabbit IgG H&L (HRP)  
(ab97051) at 1/20000 dilution

**Predicted band size:** 53 kDa

**Observed band size:** 53 kDa

**Exposure time:** 30 seconds

Blocking and diluting buffer and  
concentration 5% NFDM/TBST.



Western blot - Anti-Cdc25C (phospho S216)

antibody [E190] (ab32051)

This image is courtesy of an anonymous Abreview

**All lanes :** Anti-Cdc25C (phospho S216)  
antibody [E190] (ab32051) at 1/1000 dilution

**Lane 1 :** IR treated HeLa cell lysate

**Lane 2 :** 10 Gy IR treated (0 minutes  
recovery) HeLa cell lysate

**Lane 3 :** 10 Gy IR treated (30 minutes  
recovery) HeLa cell lysate

**Lane 4 :** 10 Gy IR treated (60 minutes  
recovery) HeLa cell lysate

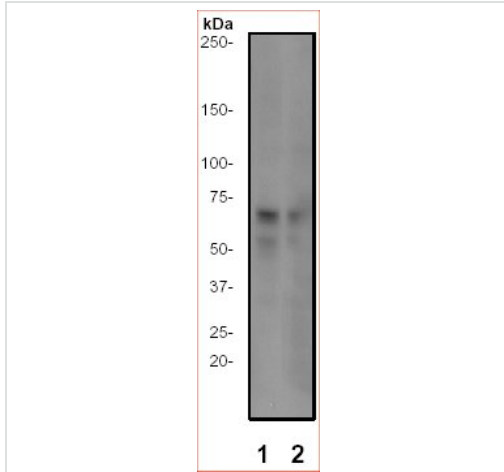
Lysates/proteins at 22 µg per lane.

Developed using the ECL technique.

Performed under reducing conditions.

**Predicted band size:** 53 kDa

**Exposure time:** 5 seconds



Western blot - Anti-Cdc25C (phospho S216)

antibody [E190] (ab32051)

**Lane 1 :** Anti-Cdc25C (phospho S216)  
antibody [E190] (ab32051) at 1/1000 dilution  
(Untreated )

**Lane 2 :** Anti-Cdc25C (phospho S216)  
antibody [E190] (ab32051) at 1/1000 dilution  
(Treated with phosphatase)

**All lanes :**

**Predicted band size:** 53 kDa

**Observed band size:** 53,60 kDa

**Please note:** All products are "FOR RESEARCH USE ONLY AND ARE NOT INTENDED FOR DIAGNOSTIC OR THERAPEUTIC USE"

### Our Promise to you: Quality guaranteed and expert technical support

- Replacement or refund for products not performing as stated on the datasheet
- Valid for 12 months from date of delivery

- Response to your inquiry within 24 hours
- We provide support in Chinese, English, French, German, Japanese and Spanish
- Extensive multi-media technical resources to help you
- We investigate all quality concerns to ensure our products perform to the highest standards

If the product does not perform as described on this datasheet, we will offer a refund or replacement. For full details of the Abpromise, please visit <http://www.abcam.co.jp/abpromise> or contact our technical team.

### **Terms and conditions**

---

- Guarantee only valid for products bought direct from Abcam or one of our authorized distributors