

Product datasheet

Anti-beta II Tubulin antibody [7B9] ab28035

5 References [画像数 1](#)

製品の概要

| | |
|----------|--------------------------------------------------------------------------------------------------------------------------------------------------|
| 製品名 | Anti-beta II Tubulin antibody [7B9] |
| 製品の詳細 | Mouse monoclonal [7B9] to beta II Tubulin |
| 由来種 | Mouse |
| アプリケーション | 適用あり: WB, ICC/IF |
| 種交差性 | 交差種: Human 交差が予測される動物種: Mammal |
| 免疫原 | Synthetic peptide, CEEEEGEDEA found at the c-terminus of beta II tubulin. Run BLAST with Run BLAST with |

製品の特性

| | |
|--------|---------------------------------------------------------------------------------------|
| 製品の状態 | Liquid |
| 保存方法 | Shipped at 4°C. Upon delivery aliquot and store at -20°C. Avoid freeze / thaw cycles. |
| 精製度 | Protein A purified |
| ポリ/モノ | モノクローナル |
| クローン名 | 7B9 |
| アイソタイプ | IgG3 |

アプリケーション

Our [Abpromise guarantee](#) covers the use of **ab28035** in the following tested applications.

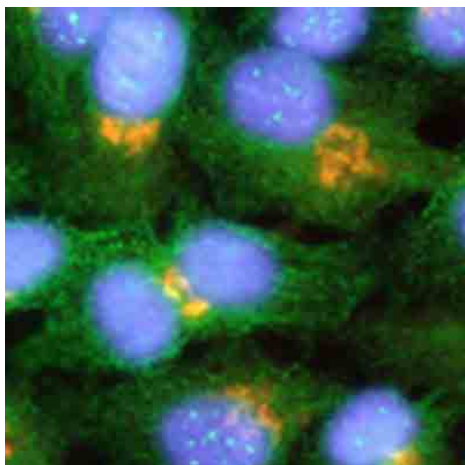
The application notes include recommended starting dilutions; optimal dilutions/concentrations should be determined by the end user.

| アプリケーション | Abreviews | 特記事項 |
|----------|-----------|---------------------------------------------|
| WB | | 1/1000. Predicted molecular weight: 50 kDa. |
| ICC/IF | | Use at an assay dependent dilution. |

ターゲット情報

| | |
|-------|-------------------------------------------------------------------------------------------------------------------------------------------------------------------------------------------------------------------------------------------------------------------------------------------------------------------------------------------------------------------------------------------------------------------------------------------------------------------------------------------------------------------------------------------------------------------------------------------------------------------------------------------------------------------------------------------------------------------------------------------------------------------------------------|
| 機能 | Tubulin is the major constituent of microtubules. It binds two moles of GTP, one at an exchangeable site on the beta chain and one at a non-exchangeable site on the alpha chain. |
| 組織特異性 | Ubiquitous. |
| 配列類似性 | Belongs to the tubulin family. |
| ドメイン | The highly acidic C-terminal region may bind cations such as calcium. |
| 翻訳後修飾 | Some glutamate residues at the C-terminus are polyglutamylated. This modification occurs exclusively on glutamate residues and results in polyglutamate chains on the gamma-carboxyl group. Also monoglycylated but not polyglycylated due to the absence of functional TTL10 in human. Monoglycylation is mainly limited to tubulin incorporated into axonemes (cilia and flagella) whereas glutamylation is prevalent in neuronal cells, centrioles, axonemes, and the mitotic spindle. Both modifications can coexist on the same protein on adjacent residues, and lowering glycylation levels increases polyglutamylation, and reciprocally. The precise function of such modifications is still unclear but they regulate the assembly and dynamics of axonemal microtubules. |
| 細胞内局在 | Cytoplasm > cytoskeleton. |

画像



ab28035 staining beta tubulin (green) in methanol fixed HeLa cells. The golgi is stained with anti-giantin,(orange)and the DNA with DAPI (blue).

Immunocytochemistry/ Immunofluorescence - Anti-beta II Tubulin antibody [7B9] (ab28035)

Please note: All products are "FOR RESEARCH USE ONLY AND ARE NOT INTENDED FOR DIAGNOSTIC OR THERAPEUTIC USE"

Our Abpromise to you: Quality guaranteed and expert technical support

- Replacement or refund for products not performing as stated on the datasheet
- Valid for 12 months from date of delivery
- Response to your inquiry within 24 hours
- We provide support in Chinese, English, French, German, Japanese and Spanish
- Extensive multi-media technical resources to help you

- We investigate all quality concerns to ensure our products perform to the highest standards

If the product does not perform as described on this datasheet, we will offer a refund or replacement. For full details of the Abpromise, please visit <http://www.abcam.co.jp/abpromise> or contact our technical team.

Terms and conditions

- Guarantee only valid for products bought direct from Abcam or one of our authorized distributors