

Product datasheet

Anti-ICAM1 antibody [B-H17] ab27294

1 References 画像数 2

製品の概要

製品名	Anti-ICAM1 antibody [B-H17]
製品の詳細	Mouse monoclonal [B-H17] to ICAM1
特異性	This antibody recognises the Intercellular Adhesion Molecule-1 (ICAM-1, 75-115kDa)
アプリケーション	適用あり: WB, IP, Flow Cyt
種交差性	交差種: Human
免疫原	Activated human umbilical vein endothelial cells

製品の特性

製品の状態	Liquid
保存方法	Shipped at 4°C. Store at +4°C short term (1-2 weeks). Upon delivery aliquot. Store at -20°C long term.
バッファー	Preservative: 0.1% Sodium Azide Constituents: 1% BSA, PBS
精製度	Ion Exchange Chromatography
ポリ/モノ	モノクローナル
クローン名	B-H17
ミエローマ	x63-Ag8.653
アイソタイプ	IgG1

アプリケーション

Our [Abpromise guarantee](#) covers the use of **ab27294** in the following tested applications.

The application notes include recommended starting dilutions; optimal dilutions/concentrations should be determined by the end user.

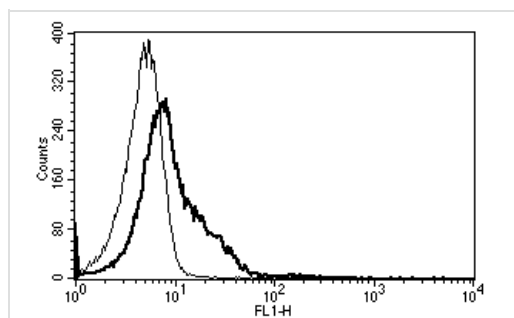
アプリケーション	Abreviews	特記事項
WB		1/500. Detects a band of approximately 58 kDa.
IP		Use at an assay dependent concentration.

Flow Cyt Use 10µl for 10⁶ cells. [ab170190](#)-Mouse monoclonal IgG1, is suitable for use as an isotype control with this antibody.

ターゲット情報

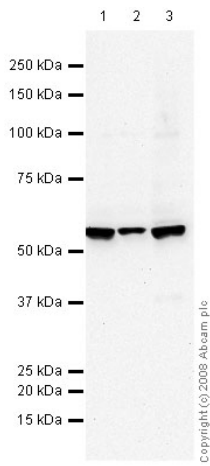
機能	ICAM proteins are ligands for the leukocyte adhesion protein LFA-1 (integrin alpha-L/beta-2). During leukocyte trans-endothelial migration, ICAM1 engagement promotes the assembly of endothelial apical cups through ARHGEF26/SGEF and RHOG activation. In case of rhinovirus infection acts as a cellular receptor for the virus.
配列類似性	Belongs to the immunoglobulin superfamily. ICAM family. Contains 5 Ig-like C2-type (immunoglobulin-like) domains.
翻訳後修飾	Monoubiquitinated, which is promoted by MARCH9 and leads to endocytosis.
細胞内局在	Membrane.

Anti-ICAM1 antibody [B-H17] 画像



A typical staining pattern with the B-H17 monoclonal antibody of lymphocytes

Flow Cytometry / FACS - ICAM1 antibody [B-H17]
(ab27294)



Western blot - ICAM1 antibody [B-H17] (ab27294)

All lanes : Anti-ICAM1 antibody [B-H17] (ab27294) at 1/500 dilution

Lane 1 : Raji (Human Burkitt's lymphoma cell line) Whole Cell Lysate

Lane 2 : Ramos (Human Burkitt's lymphoma cell line) Whole Cell Lysate

Lane 3 : Jurkat (Human T cell lymphoblast-like cell line) Whole Cell Lysate

Lysates/proteins at 10 µg per lane.

Secondary

Goat polyclonal to Mouse IgG - H&L - Pre-Adsorbed (HRP) at 1/3000 dilution

Observed band size : 58 kDa

Additional bands at : 100 kDa (possible post-translational modification).

Please note: All products are "FOR RESEARCH USE ONLY AND ARE NOT INTENDED FOR DIAGNOSTIC OR THERAPEUTIC USE"

Our Abpromise to you: Quality guaranteed and expert technical support

- Replacement or refund for products not performing as stated on the datasheet
- Valid for 12 months from date of delivery
- Response to your inquiry within 24 hours
- We provide support in Chinese, English, French, German, Japanese and Spanish
- Extensive multi-media technical resources to help you
- We investigate all quality concerns to ensure our products perform to the highest standards

If the product does not perform as described on this datasheet, we will offer a refund or replacement. For full details of the Abpromise, please visit <http://www.abcam.co.jp/abpromise> or contact our technical team.

Terms and conditions

- Guarantee only valid for products bought direct from Abcam or one of our authorized distributors