

## Product datasheet

# Anti-Nucleobindin 1 antibody ab26093

★★★★☆ 1 Abreviews [画像数 1](#)

### 製品の概要

|              |   |
|--------------|---|
| 製品名          | Anti-Nucleobindin 1 antibody  |
| 製品の詳細        | Rabbit polyclonal to Nucleobindin 1   |
| アプリケーション     | <b>適用あり:</b> ELISA, WB  |
| 種交差性         | <b>交差種:</b> Human   |
| 免疫原          | Synthetic peptide derived from a region between residues 411-461 of human Nucleobindin 1. Immunogen の所有権に関して. |
| ポジティブ・コントロール | HepG2 cell lysate for Western blot.   |

### 製品の特性

|        |  |
|--------|--|
| 製品の状態  | Liquid   |
| 保存方法   | Shipped at 4°C. Store at +4°C short term (1-2 weeks). Upon delivery aliquot. Store at -20°C long term. |
| バッファー  | Preservative: None.<br>Constituents: 2% Sucrose, PBS.  |
| 精製度    | Immunogen affinity purified  |
| ポリ/モノ  | ポリクローナル  |
| アイソタイプ | IgG  |

### アプリケーション

Our [Abpromise guarantee](#) covers the use of **ab26093** in the following tested applications.

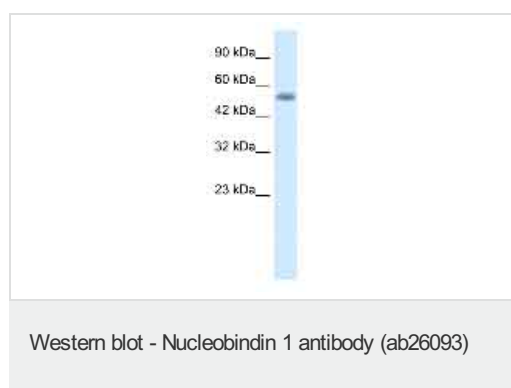
The application notes include recommended starting dilutions; optimal dilutions/concentrations should be determined by the end user.

| アプリケーション | Abreviews | 特記事項   |
|----------|-----------|--|
| ELISA    |           | 1/1.5625e+006.   |
| WB       | ★★★★☆     | Use a concentration of 1 µg/ml. Predicted molecular weight: 54 kDa. Good results were obtained when blocked with 5% non-fat dry milk in 0.05% PBS-T. |

## ターゲット情報

|       |  |
|-------|--|
| 機能    | Major calcium-binding protein of the Golgi. May have a role in calcium homeostasis.  |
| 組織特異性 | Expressed both in fetal and adult heart, lung, liver, kidney and brain, and in adult skeletal muscle, placenta and pancreas. |
| 配列類似性 | Belongs to the nucleobindin family.<br>Contains 2 EF-hand domains.   |
| ドメイン  | The EF-hand domains are unfolded in the absence of Ca(2+) and fold upon Ca(2+) addition.                                     |
| 翻訳後修飾 | Phosphorylated upon DNA damage, probably by ATM or ATR.  |
| 細胞内局在 | Golgi apparatus > cis-Golgi network membrane. Cytoplasm. A small fraction of the protein may be cytoplasmic.                 |

## 画像



Anti-Nucleobindin 1 antibody (ab26093) at 1  
µg/ml + HepG2 cell lysate 10ug.

**Predicted band size : 54 kDa**

**Please note:** All products are "FOR RESEARCH USE ONLY AND ARE NOT INTENDED FOR DIAGNOSTIC OR THERAPEUTIC USE"

## Our Abpromise to you: Quality guaranteed and expert technical support

- Replacement or refund for products not performing as stated on the datasheet
- Valid for 12 months from date of delivery
- Response to your inquiry within 24 hours
- We provide support in Chinese, English, French, German, Japanese and Spanish
- Extensive multi-media technical resources to help you
- We investigate all quality concerns to ensure our products perform to the highest standards

If the product does not perform as described on this datasheet, we will offer a refund or replacement. For full details of the Abpromise, please visit <http://www.abcam.co.jp/abpromise> or contact our technical team.

## Terms and conditions

- Guarantee only valid for products bought direct from Abcam or one of our authorized distributors