

## Product datasheet

# Anti-HLA DQ1 + HLA DQ3 antibody [HL-37] ab2600

2 References [画像数 3](#)

### 製品の概要

製品名	Anti-HLA DQ1 + HLA DQ3 antibody [HL-37]
製品の詳細	Mouse monoclonal [HL-37] to HLA DQ1 + HLA DQ3
由来種	Mouse
特異性	Reacts with polymorphic determinant on human HLA-DQ1 and HLA-DQ3 molecules (recognized epitope was found on isolated b chain of DQ1), but does not react with HLA-DQ2.
アプリケーション	<b>適用あり:</b> Flow Cyt, WB, ICC/IF, IP
種交差性	<b>交差種:</b> Human, Pig
免疫原	Tissue/ cell preparation (Human). Burkitt lymphoma cell line Raji.

### 製品の特性

製品の状態	Liquid
保存方法	Shipped at 4°C. Store at +4°C short term (1-2 weeks). Upon delivery aliquot. Store at -20°C or -80°C. Avoid freeze / thaw cycle.
バッファー	Preservative: 15mM Sodium Azide Constituents: PBS, pH 7.4
精製度	>95% by SDS-PAGE
特記事項(精製)	Purified from ascities by protein-A affinity chromatography.
ポリ/モノ	モノクローナル
クローン名	HL-37
ミエローマ	unknown
アイソタイプ	IgG3
軽鎖の種類	unknown

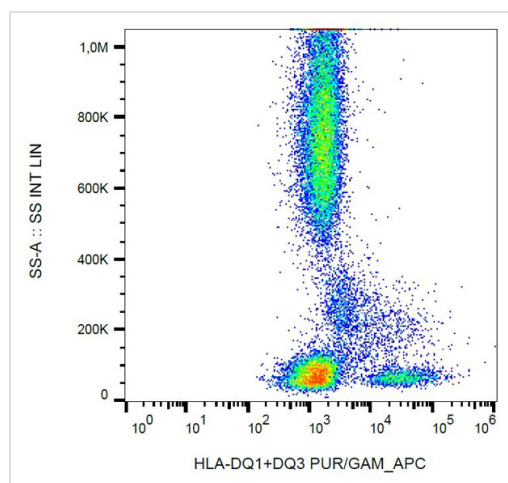
### アプリケーション

Our [Abpromise guarantee](#) covers the use of **ab2600** in the following tested applications.

The application notes include recommended starting dilutions; optimal dilutions/concentrations should be determined by the end user.

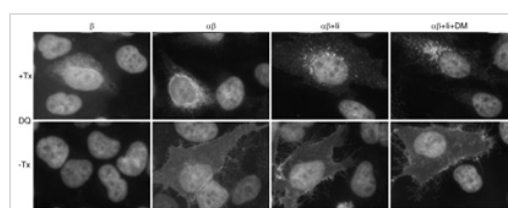
アプリケーション	Abreviews	特記事項
Flow Cyt		Use a concentration of 5 µg/ml. <a href="#">ab91537</a> - Mouse monoclonal IgG3, is suitable for use as an isotype control with this antibody.
WB		Use at an assay dependent concentration. Use under non reducing condition.
ICC/IF		Use at an assay dependent concentration. PubMed: 20959457
IP		Use at an assay dependent concentration.

## 画像



Flow Cytometry - Anti-HLA DQ1 + HLA DQ3 antibody [HL-37] (ab2600)

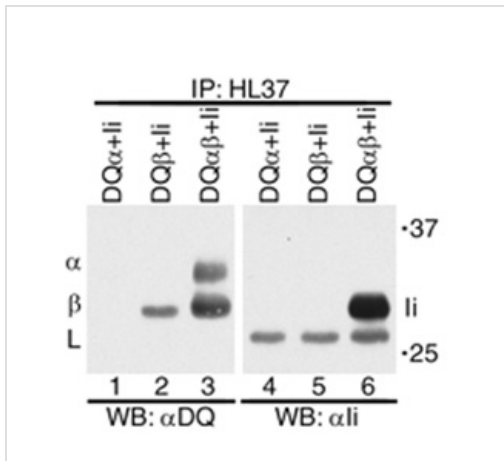
Flow cytometry analysis of human peripheral blood cells labelling HLA DQ1 + HLA DQ3 with ab2600. An APC-conjugated goat anti-mouse IgG was used as the secondary antibody.



Immunocytochemistry/ Immunofluorescence - HLA DQ1 + HLA DQ3 antibody [HL-37] (ab2600)

Image from van Lith Metal, J Biol Chem. 2010 Dec 24;285(52):40800-8. Epub 2010 Oct 19, Fig 2.

HeLa cells were transfected with DQ. The cells were fixed in paraformaldehyde and either left unpermeabilized (-Tx) or were permeabilized with 0.2% Triton X-100 (+Tx). DQ-transfected cells were immunostained with ab2600. Nuclei were stained with DAPI.



HeLa cells were transfected with different combinations of  $\alpha$ ,  $\beta$ , and li constructs as indicated. Lysates were first subjected to immunoprecipitation (IP) with ab2600 before Western blotting (WB) with anti-DQ and anti-li. H and L indicate the heavy and light chains of the antibodies used for the immunoprecipitation.

Immunoprecipitation - HLA DQ1 + HLA DQ3

antibody [HL-37] (ab2600)

Image from van Lith Met al, J Biol Chem. 2010 Dec 24;285(52):40800-8. Epub 2010 Oct 19, Fig 1.

**Please note:** All products are "FOR RESEARCH USE ONLY AND ARE NOT INTENDED FOR DIAGNOSTIC OR THERAPEUTIC USE"

## Our Abpromise to you: Quality guaranteed and expert technical support

- Replacement or refund for products not performing as stated on the datasheet
- Valid for 12 months from date of delivery
- Response to your inquiry within 24 hours
- We provide support in Chinese, English, French, German, Japanese and Spanish
- Extensive multi-media technical resources to help you
- We investigate all quality concerns to ensure our products perform to the highest standards

If the product does not perform as described on this datasheet, we will offer a refund or replacement. For full details of the Abpromise, please visit <http://www.abcam.co.jp/abpromise> or contact our technical team.

## Terms and conditions

- Guarantee only valid for products bought direct from Abcam or one of our authorized distributors