


Product datasheet

Anti-TRAFD1 antibody ab25942

画像数 2

製品の概要

製品名	Anti-TRAFD1 antibody
製品の詳細	Rabbit polyclonal to TRAFD1
由来種	Rabbit
アプリケーション	適用あり: IHC-P, ELISA, WB
種交差性	交差種: Human 交差が予測される動物種: Rat, Dog 
免疫原	Synthetic peptide derived from a region between residues 395 - 444 of human TRAFD1. Immunogen の所有権に関して.
ポジティブ・コントロール	Raji cell lysate for Western blot, and Epithelial cells of human renal tubule for Immunohistochemistry.

製品の特性

製品の状態	Liquid
保存方法	Shipped at 4°C. Upon delivery aliquot and store at -20°C. Avoid freeze / thaw cycles.
バッファー	Preservative: None. Constituents: 2% Sucrose, PBS.
精製度	Immunogen affinity purified
ポリ/モノ	ポリクローナル
アイソタイプ	IgG

アプリケーション

Our [Abpromise guarantee](#) covers the use of **ab25942** in the following tested applications.

The application notes include recommended starting dilutions; optimal dilutions/concentrations should be determined by the end user.

アプリケーション	Abreviews	特記事項
IHC-P		Use at an assay dependent concentration.

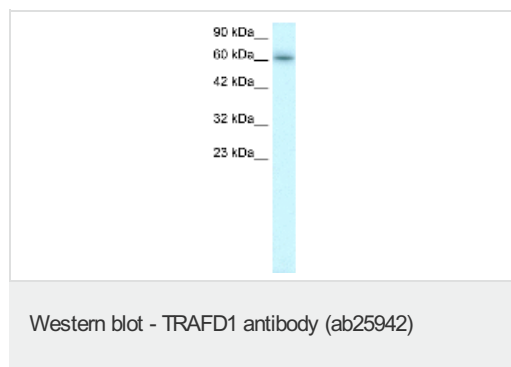
アプリ ケーション	Abreviews	特記事項
ELISA		1/62500.
WB		Use a concentration of 1 µg/ml. Detects a band of approximately 63 kDa (predicted molecular weight: 65 kDa). Good results were obtained when blocked with 5% non-fat dry milk in 0.05% PBS-T.

## ターゲット情報

**機能** Negative feedback regulator that controls excessive innate immune responses. Regulates both Toll-like receptor 4 (TLR4) and DDX58/RIG1-like helicases (RLH) pathways. May inhibit the LTR pathway by direct interaction with TRAF6 and attenuation of NF-kappa-B activation. May negatively regulate the RLH pathway downstream from MAVS and upstream of NF-kappa-B and IRF3.

**配列類似性** Contains 1 TRAF-type zinc finger.

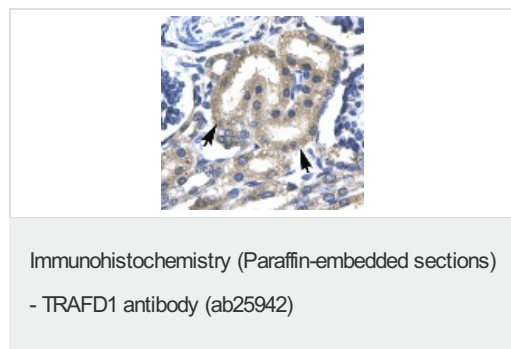
## 画像



Anti-TRAFD1 antibody (ab25942) at 1 µg/ml +  
Raji cell lysate.

**Predicted band size:** 65 kDa

**Observed band size:** 63 kDa



Ab25942 at a 4-8µg/ml dilution, staining  
epithelial cells of human kidney renal tubules  
by IHC-P. Magnification: X400.

**Please note:** All products are "FOR RESEARCH USE ONLY AND ARE NOT INTENDED FOR DIAGNOSTIC OR THERAPEUTIC USE"

## Our Abpromise to you: Quality guaranteed and expert technical support

- Replacement or refund for products not performing as stated on the datasheet

- Valid for 12 months from date of delivery
- Response to your inquiry within 24 hours
  
- We provide support in Chinese, English, French, German, Japanese and Spanish
- Extensive multi-media technical resources to help you
- We investigate all quality concerns to ensure our products perform to the highest standards

If the product does not perform as described on this datasheet, we will offer a refund or replacement. For full details of the Abpromise, please visit <http://www.abcam.co.jp/abpromise> or contact our technical team.

## **Terms and conditions**

---

- Guarantee only valid for products bought direct from Abcam or one of our authorized distributors