

Product datasheet

Anti-MHC Class 1 H2 Db antibody [28-14-8] (Phycoerythrin) ab25588

画像数 1

製品の概要

製品名	Anti-MHC Class 1 H2 Db antibody [28-14-8] (Phycoerythrin)
製品の詳細	Mouse monoclonal [28-14-8] to MHC Class 1 H2 Db (Phycoerythrin)
標識	Phycoerythrin. Ex: 488nm, Em: 575nm
特異性	This antibody binds to the a3 domain of H-2Db in the presence or absence of β 2 microglobulin. It cross reacts with the a3 domain of H-2Ld, but not Kd or Dd, and with H-2Dq and/or Lq.
アプリケーション	適用あり: Flow Cyt, IHC-Fr
種交差性	交差種: Mouse
免疫原	C3H.SW mouse splenocytes.
エピトープ	This antibody recognises an epitope in the a3 domain of H-2Db.
特記事項	This antibody has been shown to block H-2Ld-specific and H-2Ld-restricted antigen-specific lysis of target cells by cytotoxic T lymphocytes, but it does not block recognition of H-2Ld-positive target cells by Ly-6G2-positive NK cells. It has been shown to be useful in studies of complement mediated cytotoxicity.

製品の特性

製品の状態	Liquid
保存方法	Shipped at 4°C. Store at +4°C.
バッファー	Preservative: 0.09% Sodium Azide Constituents: 16% Sucrose, PBS and stabilizing agent.
精製度	IgG fraction
一次抗体 備考	This antibody has been shown to block H-2Ld-specific and H-2Ld-restricted antigen-specific lysis of target cells by cytotoxic T lymphocytes, but it does not block recognition of H-2Ld-positive target cells by Ly-6G2-positive NK cells. It has been shown to be useful in studies of complement mediated cytotoxicity.
ポリ/モノ	モノクローナル
クローン名	28-14-8
アイソタイプ	IgG2a

アプリケーション

Our [Abpromise guarantee](#) covers the use of **ab25588** in the following tested applications.

The application notes include recommended starting dilutions; optimal dilutions/concentrations should be determined by the end user.

アプリケーション	Abreviews	特記事項
Flow Cyt		Use at an assay dependent dilution.
IHC-Fr		Use at an assay dependent dilution.

ターゲット情報

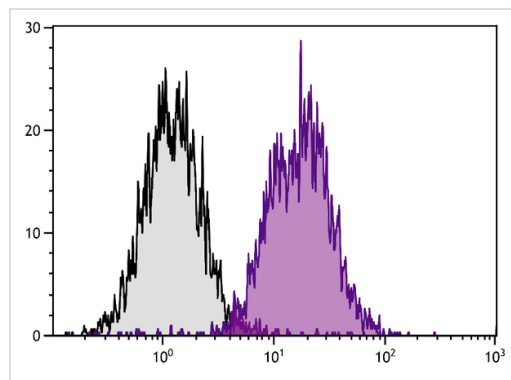
関連性

In the mouse the MHC Class 1 loci are called H2K, H2L and H2D. The equivalent loci in the human MHC are HLA (Human Leukocyte Antigen). MHC class I molecules are heterodimers, consisting of a single transmembrane polypeptide chain (the α -chain) which is highly polymorphic, and the invariant β_2 microglobulin (which is encoded elsewhere, not in the MHC). MHC class I molecules are found on almost every nucleated cell of the body. Their major function is to present peptide fragments derived from antigens to cytotoxic T cells.

細胞内局在

Cell Membrane; single pass type I membrane protein

画像



Flow cytometry analysis staining MHC Class 1 H2 Db in mouse splenocytes using ab25588 at a dilution of 0.1 $\mu\text{g}/10^6$ cells. Mouse IgG2a-PE was used as an isotype control.

Flow Cytometry - Anti-MHC Class 1 H2 Db antibody [28-14-8] (Phycoerythrin) (ab25588)

Please note: All products are "FOR RESEARCH USE ONLY AND ARE NOT INTENDED FOR DIAGNOSTIC OR THERAPEUTIC USE"

Our Abpromise to you: Quality guaranteed and expert technical support

- Replacement or refund for products not performing as stated on the datasheet
- Valid for 12 months from date of delivery

- Response to your inquiry within 24 hours
- We provide support in Chinese, English, French, German, Japanese and Spanish
- Extensive multi-media technical resources to help you
- We investigate all quality concerns to ensure our products perform to the highest standards

If the product does not perform as described on this datasheet, we will offer a refund or replacement. For full details of the Abpromise, please visit <http://www.abcam.co.jp/abpromise> or contact our technical team.

Terms and conditions

- Guarantee only valid for products bought direct from Abcam or one of our authorized distributors