

Product datasheet

Anti-TCR alpha + TCR beta antibody [TCR3] (Phycoerythrin)
ab25424

画像数 1

製品の概要

製品名	Anti-TCR alpha + TCR beta antibody [TCR3] (Phycoerythrin)
製品の詳細	Mouse monoclonal [TCR3] to TCR alpha + TCR beta (Phycoerythrin)
由来種	Mouse
標識	Phycoerythrin. Ex: 488nm, Em: 575nm
特異性	This antibody reacts with approximately 9% of thymocytes, 15-25% of blood mononuclear cells and 13% of splenocytes from young adult chickens.
アプリケーション	適用あり: Flow Cyt, IHC-Fr
種交差性	交差種: Chicken
免疫原	The details of the immunogen for this antibody are not available.
特記事項	This antibody has been shown to be useful in studies of in ovo suppression of development of TCR V beta 2 cells.

製品の特性

製品の状態	Liquid
保存方法	Shipped at 4°C. Store at +4°C.
バッファー	Preservative: 0.09% Sodium Azide Constituents: 16% Sucrose, PBS; Stabilizing agent
精製度	IgG fraction
一次抗体 備考	This antibody has been shown to be useful in studies of in ovo suppression of development of TCR V beta 2 cells.
ポリ/モノ	モノクローナル
クローン名	TCR3
アイソタイプ	IgG1
軽鎖の種類	kappa

アプリケーション

Our [Abpromise guarantee](#) covers the use of **ab25424** in the following tested applications.

The application notes include recommended starting dilutions; optimal dilutions/concentrations should be determined by the end user.

アプリケーション	Abreviews	特記事項
Flow Cyt		Use 0.5 μ g for 10 ⁶ cells.
IHC-Fr		Use at an assay dependent concentration. Acetone fixed.

ターゲット情報

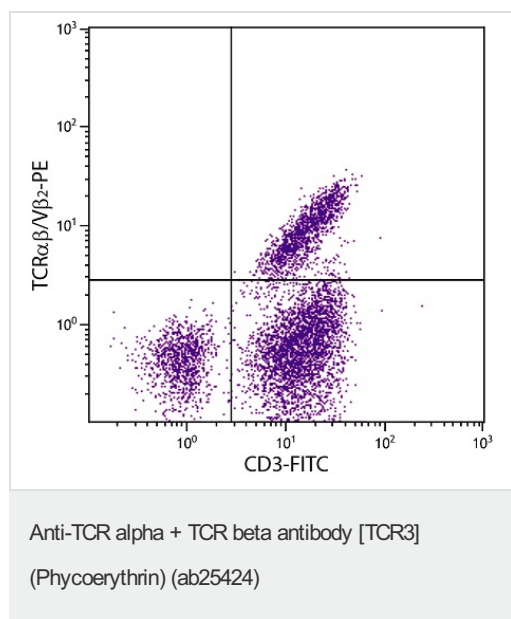
関連性

The receptors on T cells consist of immunoglobulin like integral membrane glycoproteins containing 2 polypeptide subunits, alpha and beta, of similar molecular weight, 40 to 55 kD in the human. Like the immunoglobulins of the B cells, each T cell receptor subunit has, external to the cell membrane, an N terminal variable domain and a C terminal constant domain. T cell receptors recognise foreign antigens which have been processed as small peptides and bound to major histocompatibility complex molecules at the surface of antigen presenting cells. Each T cell receptor is a dimer consisting of one alpha and one beta chain or one delta and one gamma chain. In a single cell, the T cell receptor loci are rearranged and expressed in the order delta, gamma, beta, and alpha. If both delta and gamma rearrangements produce functional chains, the cell expresses delta and gamma. If not, the cell proceeds to rearrange the beta and alpha loci.

細胞内局在

Type I membrane protein.

画像



Please note: All products are "FOR RESEARCH USE ONLY AND ARE NOT INTENDED FOR DIAGNOSTIC OR THERAPEUTIC USE"

Our Abpromise to you: Quality guaranteed and expert technical support

- Replacement or refund for products not performing as stated on the datasheet
- Valid for 12 months from date of delivery
- Response to your inquiry within 24 hours

- We provide support in Chinese, English, French, German, Japanese and Spanish
- Extensive multi-media technical resources to help you
- We investigate all quality concerns to ensure our products perform to the highest standards

If the product does not perform as described on this datasheet, we will offer a refund or replacement. For full details of the Abpromise, please visit <http://www.abcam.co.jp/abpromise> or contact our technical team.

Terms and conditions

- Guarantee only valid for products bought direct from Abcam or one of our authorized distributors