

Product datasheet

Anti-CD80 antibody [1G10] (FITC) ab24860

画像数 1

製品の概要

製品名	Anti-CD80 antibody [1G10] (FITC)
製品の詳細	Rat monoclonal [1G10] to CD80 (FITC)
標識	FITC. Ex: 493nm, Em: 528nm
アプリケーション	適用あり: Flow Cyt, Functional Studies, IP
種交差性	交差種: Mouse
免疫原	The details of the immunogen for this antibody are not available.

製品の特性

製品の状態	Liquid
保存方法	Shipped at 4°C. Store at +4°C.
バッファー	Preservative: 0.1% Sodium Azide Constituents: PBS
精製度	IgG fraction
ポリ/モノ	モノクローナル
クローン名	1G10
アイソタイプ	IgG2a
軽鎖の種類	kappa

アプリケーション

Our [Abpromise guarantee](#) covers the use of **ab24860** in the following tested applications.

The application notes include recommended starting dilutions; optimal dilutions/concentrations should be determined by the end user.

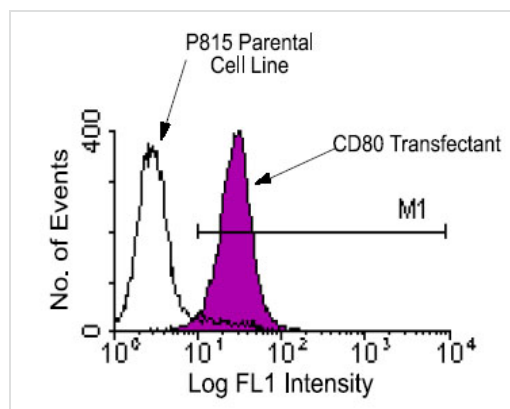
アプリケーション	Abreviews	特記事項
Flow Cyt		Use 1µg for 10 ⁶ cells. ab18446 - Rat monoclonal IgG2a, is suitable for use as an isotype control with this antibody.

アプリケーション	Abreviews	特記事項
Functional Studies		Use at an assay dependent concentration. Also suitable for in vivo and in vitro blocking of ligand binding.
IP		Use at an assay dependent concentration.

ターゲット情報

機能	Involved in the costimulatory signal essential for T-lymphocyte activation. T-cell proliferation and cytokine production is induced by the binding of CD28 or CTLA-4 to this receptor.
組織特異性	Expressed on activated B-cells, macrophages and dendritic cells.
配列類似性	Contains 1 Ig-like C2-type (immunoglobulin-like) domain. Contains 1 Ig-like V-type (immunoglobulin-like) domain.
細胞内局在	Membrane.

画像



Flow Cytometry - CD80 antibody [1G10] (FITC)
(ab24860)

P815 cells transfected with CD80 or non-transfected P815 control cells were stained with ab24860 (3 $\mu\text{g}/10^6$ cells). Large cells were then gated and analyzed on a FACScan™ flow cytometer (BDIS, San Jose, CA).

Please note: All products are "FOR RESEARCH USE ONLY AND ARE NOT INTENDED FOR DIAGNOSTIC OR THERAPEUTIC USE"

Our Abpromise to you: Quality guaranteed and expert technical support

- Replacement or refund for products not performing as stated on the datasheet
- Valid for 12 months from date of delivery
- Response to your inquiry within 24 hours
- We provide support in Chinese, English, French, German, Japanese and Spanish
- Extensive multi-media technical resources to help you
- We investigate all quality concerns to ensure our products perform to the highest standards

If the product does not perform as described on this datasheet, we will offer a refund or replacement. For full details of the Abpromise, please visit <http://www.abcam.co.jp/abpromise> or contact our technical team.

Terms and conditions

- Guarantee only valid for products bought direct from Abcam or one of our authorized distributors