

Product datasheet

Anti-cAMP antibody [SPM486] ab24851

★★★★★ 1 Abreviews 8 References 画像数 4

製品の概要

製品名	Anti-cAMP antibody [SPM486]
製品の詳細	Mouse monoclonal [SPM486] to cAMP
由来種	Mouse
アプリケーション	適用あり: Flow Cyt, ELISA, ICC/IF, WB
種交差性	交差種: Species independent
免疫原	Adenosine 3, 5-Cyclic Monophosphate (cAMP) compounds.

製品の特性

製品の状態	Liquid
保存方法	Shipped at 4°C. Upon delivery aliquot and store at -20°C. Avoid freeze / thaw cycles.
バッファー	pH: 7.40 Preservative: 0.05% Sodium azide Constituents: BSA, 0.0268% PBS
精製度	Protein G purified
ポリモノ	モノクローナル
クローン名	SPM486
アイソタイプ	IgG1

アプリケーション

Our [Abpromise guarantee](#) covers the use of **ab24851** in the following tested applications.

The application notes include recommended starting dilutions; optimal dilutions/concentrations should be determined by the end user.

アプリケーション	Abreviews	特記事項
Flow Cyt	★★★★★	Use at an assay dependent concentration. ab170190 -Mouse monoclonal IgG1, is suitable for use as an isotype control with this antibody.
ELISA		Use at an assay dependent concentration.

アプリケーション	Abreviews	特記事項
ICC/IF		Use at an assay dependent concentration.
WB		Use at an assay dependent concentration. WB was tested against chemically linked cAMP-carrier protein which was used for antibody screening.

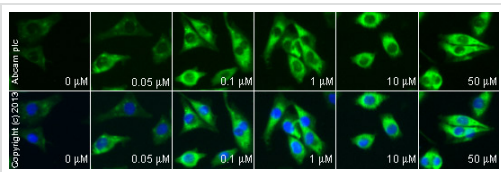
ターゲット情報

関連性

Cyclic adenosine monophosphate (cAMP) plays a key role as an intracellular second messenger for transduction events that follow a number of extracellular signals. The G-Protein Coupled Receptors (GPCR) is the largest family of cell surface receptors. They can be activated by different ligands, such as neurotransmitters, hormones, ions, small molecules, peptides, and other physiological signaling molecules. Typically, the binding of the ligands to its receptor resulting in the activation of G-proteins, in return, activates the effector adenylyl cyclase evoking the production of cAMP. The activation of a protein kinase by cAMP results in the phosphorylation of substrate proteins. Currently successful drugs in marketing have been developed to target these receptors. Among the GPCRs, ~367 receptors are potential drug development targets, but only about 20 have been used to generate therapeutically and commercially successful drugs so far. Because the involvement of cAMP can amplify the response of the ligand binding, the second messenger cAMP has been largely employed to monitor the activation of the GPCR to facilitate the therapeutic drug discovery.

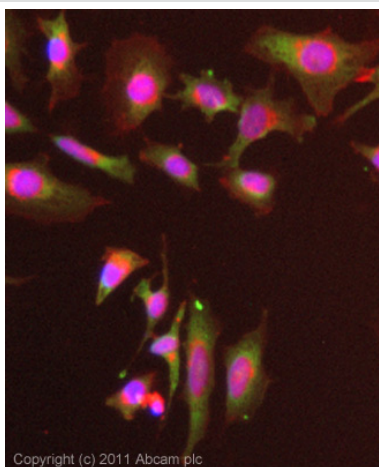
細胞内局在 Secreted

画像



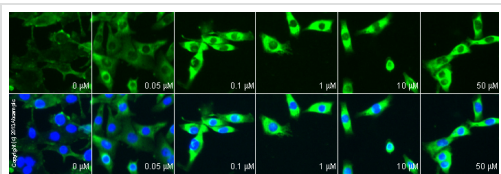
Immunocytochemistry/ Immunofluorescence - Anti-cAMP antibody [SPM486] (ab24851)

ab24851 staining cAMP in MALME-3M cells treated with melanotan II (ab141161), by ICC/IF. Increase of cAMP expression correlates with increased concentration of melanotan II, as described in literature. The cells were incubated at 37°C for 4h in media containing different concentrations of ab141161 (melanotan II) in DMSO, fixed with 4% formaldehyde for 10 minutes at room temperature and blocked with PBS containing 10% goat serum, 0.3 M glycine, 1% BSA and 0.1% tween for 2h at room temperature. Staining of the treated cells with ab24851 (5 μg/ml) was performed overnight at 4°C in PBS containing 1% BSA and 0.1% tween. A DyLight 488 anti-mouse polyclonal antibody (ab96879) at 1/250 dilution was used as the secondary antibody. Nuclei were counterstained with DAPI and are shown in blue.



Immunocytochemistry/ Immunofluorescence-cAMP antibody [SPM486](ab24851)

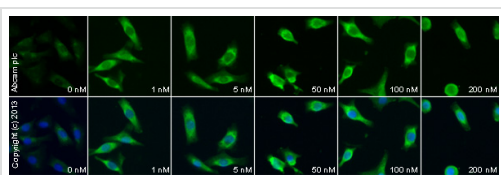
ICC/IF image of ab24851 stained HeLa cells. The cells were 4% formaldehyde fixed (10 min) and then incubated in 1%BSA / 10% normal goat serum / 0.3M glycine in 0.1% PBS-Tween for 1h to permeabilise the cells and block non-specific protein-protein interactions. The cells were then incubated with the antibody (ab24851, 1 μg/ml) overnight at +4°C. The secondary antibody (green) was Alexa Fluor® 488 goat anti-mouse IgG (H+L) used at a 1/1000 dilution for 1h. Alexa Fluor® 594 WGA was used to label plasma membranes (red) at a 1/200 dilution for 1h. DAPI was used to stain the cell nuclei (blue) at a concentration of 1.43 μM.



Immunocytochemistry/ Immunofluorescence - Anti-cAMP antibody [SPM486] (ab24851)

ab24851 staining cAMP in MALME-3M cells treated with α -MSH ([ab120205](#)), by ICC/IF. Increase of cAMP correlates with increased concentration of α -MSH, as described in literature.

The cells were incubated at 37°C for 2h in media containing different concentrations of [ab120205](#) (α -MSH) in DMSO, fixed with 4% formaldehyde for 10 minutes at room temperature and blocked with PBS containing 10% goat serum, 0.3 M glycine, 1% BSA and 0.1% tween for 2h at room temperature. Staining of the treated cells with ab24851 (5 μ g/ml) was performed overnight at 4°C in PBS containing 1% BSA and 0.1% tween. A DyLight 488 goat anti-mouse polyclonal antibody ([ab96879](#)) at 1/250 dilution was used as the secondary antibody. Nuclei were counterstained with DAPI and are shown in blue.



Immunocytochemistry/ Immunofluorescence - Anti-cAMP antibody [SPM486] (ab24851)

ab24851 staining cAMP in MALME-3M cells treated with α -MSH ([ab120189](#)), by ICC/IF. Increase of cAMP correlates with increased concentration of α -MSH as described in literature.

The cells were incubated at 37°C for 6h in media containing different concentrations of [ab120189](#) (α -MSH) in DMSO, fixed with 4% formaldehyde for 10 minutes at room temperature and blocked with PBS containing 10% goat serum, 0.3 M glycine, 1% BSA and 0.1% tween for 2h at room temperature. Staining of the treated cells with ab24851 (5 μ g/ml) was performed overnight at 4°C in PBS containing 1% BSA and 0.1% tween. A DyLight 488 goat anti-mouse polyclonal antibody ([ab96879](#)) at 1/250 dilution was used as the secondary antibody. Nuclei were counterstained with DAPI and are shown in blue.

Our Abpromise to you: Quality guaranteed and expert technical support

- Replacement or refund for products not performing as stated on the datasheet
- Valid for 12 months from date of delivery
- Response to your inquiry within 24 hours

- We provide support in Chinese, English, French, German, Japanese and Spanish
- Extensive multi-media technical resources to help you
- We investigate all quality concerns to ensure our products perform to the highest standards

If the product does not perform as described on this datasheet, we will offer a refund or replacement. For full details of the Abpromise, please visit <http://www.abcam.co.jp/abpromise> or contact our technical team.

Terms and conditions

- Guarantee only valid for products bought direct from Abcam or one of our authorized distributors