

## Product datasheet

# Anti-NFkB Inducing Kinase NIK antibody ab22042

画像数 1

### 製品の概要

製品名	Anti-NFkB Inducing Kinase NIK antibody
製品の詳細	Rabbit polyclonal to NFkB Inducing Kinase NIK
由来種	Rabbit
アプリケーション	適用あり: WB
種交差性	交差種: Human
免疫原	Synthetic peptide: HAQPRELSPRAPGPRPA , corresponding to amino acids 687-703 of Human NFkB Inducing Kinase NIK
	<a href="#">Run BLAST with</a> <a href="#">Run BLAST with</a>

### 製品の特性

製品の状態	Liquid
保存方法	Shipped at 4°C. Store at +4°C short term (1-2 weeks). Upon delivery aliquot. Store at -20°C or -80°C. Avoid freeze / thaw cycle.
バッファー	Preservative: 0.05% Sodium Azide Constituents: 0.2% Gelatin, PBS
精製度	Protein G purified
ポリモノ	ポリクローナル
アイソタイプ	IgG

### アプリケーション

Our [Abpromise guarantee](#) covers the use of **ab22042** in the following tested applications.

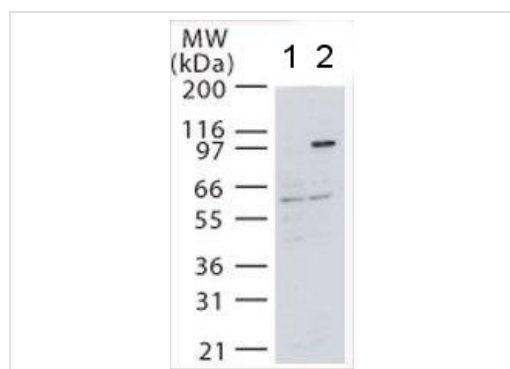
The application notes include recommended starting dilutions; optimal dilutions/concentrations should be determined by the end user.

アプリケーション	Abreviews	特記事項
WB		Use a concentration of 1 - 3 µg/ml. Detects a band of approximately 105 kDa (predicted molecular weight: 105 kDa).

## ターゲット情報

機能	Lymphotoxin beta-activated kinase which seems to be exclusively involved in the activation of NF-kappa-B and its transcriptional activity. Promotes proteolytic processing of NFKB2/P100, which leads to activation of NF-kappa-B via the non-canonical pathway. Could act in a receptor-selective manner.
組織特異性	Weakly expressed in testis, small intestine, spleen, thymus, peripheral blood leukocytes, prostate, ovary and colon.
配列類似性	Belongs to the protein kinase superfamily. STE Ser/Thr protein kinase family. MAP kinase kinase kinase subfamily. Contains 1 protein kinase domain.
翻訳後修飾	Autophosphorylated. Phosphorylation at Thr-559 is required to activates its kinase activity and 'Lys-63'-linked polyubiquitination. Phosphorylated by CHUK/IKKA leading to MAP3K14 destabilization. Ubiquitinated. Undergoes both 'Lys-48'- and 'Lys-63'-linked polyubiquitination. 'Lys-48'-linked polyubiquitination leads to its degradation by the proteasome, while 'Lys-63'-linked polyubiquitination stabilizes and activates it.
細胞内局在	Cytoplasm.

## 画像



Western blot - NFkB Inducing Kinase NIK antibody (ab22042)

**Lane 1 :** Anti-NFkB Inducing Kinase NIK antibody (ab22042) at 3 µg/ml (in untransfected 293 cells )

**Lane 2 :** Anti-NFkB Inducing Kinase NIK antibody (ab22042) at 3 µg/ml (in transfected 293 cells)

### All lanes :

Performed under reducing conditions.

**Predicted band size:** 105 kDa

**Observed band size:** 105 kDa

**Additional bands at:** 60 kDa. We are unsure as to the identity of these extra bands.

**Please note:** All products are "FOR RESEARCH USE ONLY AND ARE NOT INTENDED FOR DIAGNOSTIC OR THERAPEUTIC USE"

## Our Promise to you: Quality guaranteed and expert technical support

- Replacement or refund for products not performing as stated on the datasheet

- Valid for 12 months from date of delivery
- Response to your inquiry within 24 hours
  
- We provide support in Chinese, English, French, German, Japanese and Spanish
- Extensive multi-media technical resources to help you
- We investigate all quality concerns to ensure our products perform to the highest standards

If the product does not perform as described on this datasheet, we will offer a refund or replacement. For full details of the Abpromise, please visit <http://www.abcam.co.jp/abpromise> or contact our technical team.

### **Terms and conditions**

---

- Guarantee only valid for products bought direct from Abcam or one of our authorized distributors