

Product datasheet

Anti-ATRIP antibody ab17962

1 References [画像数 1](#)

製品の概要

製品名	Anti-ATRIP antibody
製品の詳細	Rabbit polyclonal to ATRIP
由来種	Rabbit
アプリケーション	適用あり: WB
種交差性	交差種: Human
免疫原	This information is considered to be commercially sensitive.
ポジティブ・コントロール	HeLa whole cell lysate.

製品の特性

製品の状態	Liquid
保存方法	Shipped at 4°C. Upon delivery aliquot and store at -20°C. Avoid freeze / thaw cycles.
バッファー	Preservative: 0.1% Sodium Azide Constituents: 8mM PBS, 60mM Citrate, 150mM Tris, pH 7-8
精製度	Immunogen affinity purified
特記事項 (精製)	Purified using an epitope specific to ATRIP immobilized on solid support.
ポリ/モノ	ポリクローナル
アイソタイプ	IgG

アプリケーション

Our [Abpromise guarantee](#) covers the use of **ab17962** in the following tested applications.

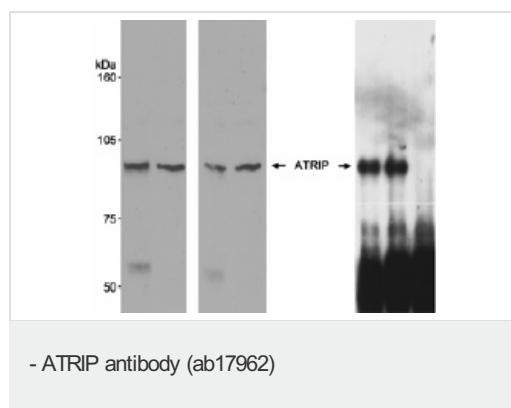
The application notes include recommended starting dilutions; optimal dilutions/concentrations should be determined by the end user.

アプリケーション	Abreviews	特記事項
WB		1/5000 - 1/15000. Detects a band of approximately 95 kDa (predicted molecular weight: 86.8 kDa).

ターゲット情報

機能	Required for checkpoint signaling after DNA damage. Required for ATR expression, possibly by stabilizing the protein.
組織特異性	Ubiquitous.
配列類似性	Belongs to the ATRIP family.
ドメイン	The EEXXXDDL motif is required for the interaction with catalytic subunit PRKDC and its recruitment to sites of DNA damage.
翻訳後修飾	Phosphorylated by ATR.
細胞内局在	Nucleus. Redistributes to discrete nuclear foci upon DNA damage.

画像



Detection of Human ATRIP using ab17962 by Western Blot (2 x left images) and Immunoprecipitation (right image).

Samples: Whole cell lysate (100 µg for WB; 400 µg for IP) from HeLa (A & B) and 293-T (A) cells.

Antibodies: Affinity purified rabbit anti-ATRIP antibody (ab17962) used at 1/500 and 1/15000 dilution for WB and 3 µg/0.4 mg lysate for IP.

ATRIP was also immunoprecipitated using a control antibody generated to recombinant human ATRIP:

Right image - lane 1 ab17962; lane 2 control antibody; lane 3 normal IgG.

Immunoprecipitated ATRIP was detected using the antibody to the recombinant protein. Detection: Chemiluminescence with exposure times of 5 minutes (2 x left) and 45 seconds (right image).

Please note: All products are "FOR RESEARCH USE ONLY AND ARE NOT INTENDED FOR DIAGNOSTIC OR THERAPEUTIC USE"

Our Abpromise to you: Quality guaranteed and expert technical support

- Replacement or refund for products not performing as stated on the datasheet
- Valid for 12 months from date of delivery

- Response to your inquiry within 24 hours
- We provide support in Chinese, English, French, German, Japanese and Spanish
- Extensive multi-media technical resources to help you
- We investigate all quality concerns to ensure our products perform to the highest standards

If the product does not perform as described on this datasheet, we will offer a refund or replacement. For full details of the Abpromise, please visit <http://www.abcam.co.jp/abpromise> or contact our technical team.

Terms and conditions

- Guarantee only valid for products bought direct from Abcam or one of our authorized distributors