

Product datasheet

Anti-Granulocytes antibody [SPM250], prediluted ab17856

1 References [画像数 1](#)

製品の概要

製品名	Anti-Granulocytes antibody [SPM250], prediluted
製品の詳細	Mouse monoclonal [SPM250] to Granulocytes, prediluted
由来種	Mouse
特異性	This antibody reacts with early precursor and mature forms of human myeloid cells. It is useful for the detection of myeloid leukemias and granulocytic sarcomas. It can be used as a marker of granulocytes in normal tissues or inflammatory processes. We have data to indicate that this antibody may not cross react with Rat. However, this has not been conclusively tested and expression levels may vary in certain cell lines/tissues.
アプリケーション	適用あり: IHC-P
種交差性	交差種: Human
免疫原	Nuclei from pokeweed mitogen stimulated human peripheral blood lymphocytes.
ポジティブ・コントロール	Tonsil or lymph node

製品の特性

製品の状態	Prediluted
保存方法	Shipped at 4°C. Store at +4°C.
精製度	Whole antiserum
ポリ/モノ	モノクローナル
クローン名	SPM250
アイソタイプ	IgG1
軽鎖の種類	kappa

アプリケーション

Our [Abpromise guarantee](#) covers the use of **ab17856** in the following tested applications.

The application notes include recommended starting dilutions; optimal dilutions/concentrations should be determined by the end user.

IHC-P

追加情報

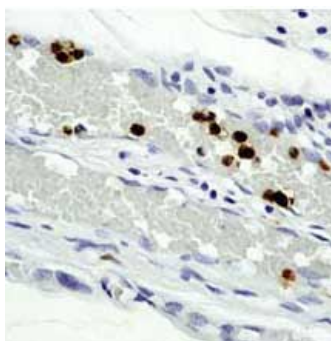
IHC-P: Ready-to-use for 30 min at RT. No special pretreatment is required for histochemical staining of formalin/paraffin tissues.

Not tested in other applications.

Optimal dilutions/concentrations should be determined by the end user.

ターゲット情報**関連性**

Granulocytes are a type of white blood cell filled with microscopic granules that are little sacs containing enzymes, compounds that digest microorganisms. They are part of the innate immune system and have somewhat nonspecific, broad-based activity. They do not respond exclusively to specific antigens, as do B-cells and T-cells. Neutrophils, eosinophils and basophils are all types of granulocytes. They are named by the staining features of their granules in the laboratory: Neutrophils have "neutral" subtle granules; Eosinophils have prominent granules that stain readily with the acid dye eosin; and Basophils have prominent granules that stain readily basic (non acidic) dyes.

画像

ab17856 (Myeloid cell marker) staining
Granulocytes in formalin fixed paraffin
(ab17856, 30min at RT) embedded human
tonsil tissue.

Immunohistochemistry (Formalin/PFA-fixed paraffin-embedded sections) - Granulocytes antibody [SPM250], prediluted (ab17856)

Please note: All products are "FOR RESEARCH USE ONLY AND ARE NOT INTENDED FOR DIAGNOSTIC OR THERAPEUTIC USE"

Our Abpromise to you: Quality guaranteed and expert technical support

- Replacement or refund for products not performing as stated on the datasheet
- Valid for 12 months from date of delivery
- Response to your inquiry within 24 hours
- We provide support in Chinese, English, French, German, Japanese and Spanish

- Extensive multi-media technical resources to help you
- We investigate all quality concerns to ensure our products perform to the highest standards

If the product does not perform as described on this datasheet, we will offer a refund or replacement. For full details of the Abpromise, please visit <http://www.abcam.co.jp/abpromise> or contact our technical team.

Terms and conditions

- Guarantee only valid for products bought direct from Abcam or one of our authorized distributors