

Product datasheet

Anti-Peroxiredoxin 6 antibody [1A11] ab16946

2 References [画像数 1](#)

製品の概要

製品名	Anti-Peroxiredoxin 6 antibody [1A11]
製品の詳細	Mouse monoclonal [1A11] to Peroxiredoxin 6
由来種	Mouse
アプリケーション	適用あり: ELISA, WB, IP
種交差性	交差種: Human
免疫原	Recombinant full length protein (Human).
ポジティブ・コントロール	HeLa cell lysate

製品の特性

製品の状態	Liquid
保存方法	Shipped at 4°C. Upon delivery aliquot and store at -20°C. Avoid freeze / thaw cycles.
バッファー	Preservative: 0.03% Sodium Azide Constituents: 50% Glycerol, 0.01% BSA, HEPES, 0.15M Sodium chloride
ポリ/モノ	モノクローナル
クローン名	1A11
アイソタイプ	IgG1
軽鎖の種類	kappa

アプリケーション

Our [Abpromise guarantee](#) covers the use of **ab16946** in the following tested applications.

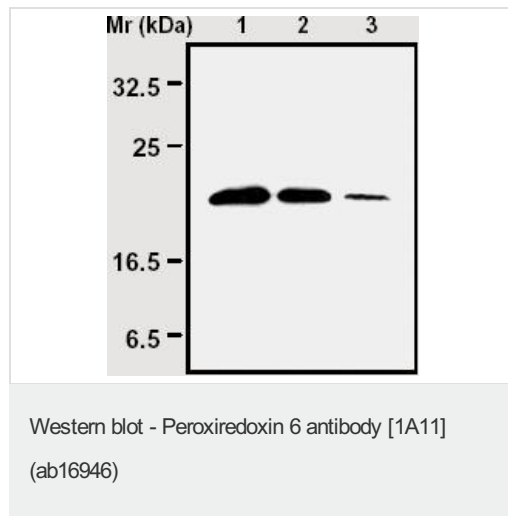
The application notes include recommended starting dilutions; optimal dilutions/concentrations should be determined by the end user.

アプリケーション	Abreviews	特記事項
ELISA		Use at an assay dependent dilution.
WB		1/1000. Predicted molecular weight: 25 kDa.
IP		Use a concentration of 1 - 2 µg/ml.

ターゲット情報

機能	Involved in redox regulation of the cell. Can reduce H ₂ O ₂ and short chain organic, fatty acid, and phospholipid hydroperoxides. May play a role in the regulation of phospholipid turnover as well as in protection against oxidative injury.
配列類似性	Belongs to the ahpC/TSA family. Rehydrin subfamily. Contains 1 thioredoxin domain.
細胞内局在	Cytoplasm. Lysosome. Cytoplasmic vesicle. Also found in lung secretory organelles.

画像



All lanes : Anti-Peroxiredoxin 6 antibody [1A11] (ab16946) at 1/1000 dilution

Lane 1 : Cell lysates prepared from HeLa cells

Lane 2 : Cell lysates prepared from 293T cells

Lane 3 : Cell lysates prepared from Jurkat cells

Predicted band size: 25 kDa

Please note: All products are "FOR RESEARCH USE ONLY AND ARE NOT INTENDED FOR DIAGNOSTIC OR THERAPEUTIC USE"

Our Abpromise to you: Quality guaranteed and expert technical support

- Replacement or refund for products not performing as stated on the datasheet
- Valid for 12 months from date of delivery
- Response to your inquiry within 24 hours
- We provide support in Chinese, English, French, German, Japanese and Spanish
- Extensive multi-media technical resources to help you
- We investigate all quality concerns to ensure our products perform to the highest standards

If the product does not perform as described on this datasheet, we will offer a refund or replacement. For full details of the Abpromise, please visit <http://www.abcam.co.jp/abpromise> or contact our technical team.

Terms and conditions

- Guarantee only valid for products bought direct from Abcam or one of our authorized distributors