

## Product datasheet

# Anti-Thioredoxin 2 antibody [4C5] ab16856

### 画像数 1

#### 製品の概要

製品名	Anti-Thioredoxin 2 antibody [4C5]
製品の詳細	Mouse monoclonal [4C5] to Thioredoxin 2
由来種	Mouse
アプリケーション	<b>適用あり:</b> ELISA, IP <b>適用なし:</b> WB
種交差性	<b>交差種:</b> Mouse, Rat, Human
免疫原	Recombinant full length protein (Human).
ポジティブ・コントロール	293T cell lysate

#### 製品の特性

製品の状態	Liquid
保存方法	Shipped at 4°C. Upon delivery aliquot and store at -20°C. Avoid freeze / thaw cycles.
バッファー	Preservative: None Constituents: 50% Glycerol, PBS
ポリ/モノ	モノクローナル
クローン名	4C5
アイソタイプ	IgG2b
軽鎖の種類	kappa

#### アプリケーション

Our [Abpromise guarantee](#) covers the use of **ab16856** in the following tested applications.

The application notes include recommended starting dilutions; optimal dilutions/concentrations should be determined by the end user.

アプリケーション	Abreviews	特記事項
ELISA		Use at an assay dependent dilution.
IP		Use a concentration of 2 µg/ml.

## 追加情報

Is unsuitable for WB.

## ターゲット情報

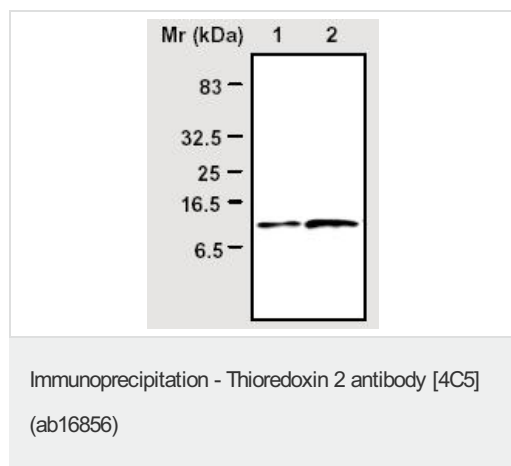
### 関連性

Thioredoxins (Trx) are small, multi-functional proteins with oxidoreductase activity and are ubiquitous in essentially all living cells. Trx contains a redox-active disulfide/dithiol group within the conserved Cys-Gly-Pro-Cys active site. The two cysteine residues in the conserved active centers can be oxidized to form intramolecular disulfide bonds. Reduction of the active site disulfide in oxidized Trx is catalyzed by Trx reductase with NADPH as the electron donor. The reduced Trx is a hydrogen donor for ribonucleotide reductase, the essential enzyme for DNA synthesis, and a potent general protein disulfide reductase with numerous functions in growth and redox regulations. Specific protein disulfide targets for reduction by Trx include protein disulfide isomerase (PDI) and a number of transcription factors such as p53, NF- $\kappa$ B and AP-1. Trx is also capable of removing H<sub>2</sub>O<sub>2</sub>, particularly when it is coupled with either methionine sulfoxide reductase or several isoforms of peroxiredoxins.

### 細胞内局在

Mitochondrial

## 画像



Immunoprecipitation analysis of 293T cell lysates using ab16856 at 2 $\mu$ g/ml of cell lysate. Western blot using another Thioredoxin 2 antibody (ab16836).

Lane 1- Input  
Lane 2- Precipitates

**Please note:** All products are "FOR RESEARCH USE ONLY AND ARE NOT INTENDED FOR DIAGNOSTIC OR THERAPEUTIC USE"

## Our Abpromise to you: Quality guaranteed and expert technical support

- Replacement or refund for products not performing as stated on the datasheet
- Valid for 12 months from date of delivery
- Response to your inquiry within 24 hours
- We provide support in Chinese, English, French, German, Japanese and Spanish
- Extensive multi-media technical resources to help you
- We investigate all quality concerns to ensure our products perform to the highest standards

If the product does not perform as described on this datasheet, we will offer a refund or replacement. For full details of the Abpromise, please visit <http://www.abcam.co.jp/abpromise> or contact our technical team.

## Terms and conditions

---

- Guarantee only valid for products bought direct from Abcam or one of our authorized distributors