




Product datasheet

Anti-Bcl-XL antibody ab13891

画像数 1

製品の概要

製品名	Anti-Bcl-XL antibody
製品の詳細	Rabbit polyclonal to Bcl-XL
由来種	Rabbit
特異性	This antibody cross-reacts with Bcl xS.
アプリケーション	適用あり: WB
種交差性	交差種: Mouse, Human 交差が予測される動物種: Rat, Sheep, Rabbit, Cat, Dog, Pig 
免疫原	Synthetic peptide corresponding to Human Bcl-XL aa 3-14. Sequence: QSNRELVVDFLS Database link: Q07817  Run BLAST with  Run BLAST with
ポジティブ・コントロール	Jurkat human T cells, MOLT4 human leukemia cells or Rh30 human rhabdomyosarcoma cells.

製品の特性

製品の状態	Liquid
保存方法	Shipped at 4°C. Store at +4°C short term (1-2 weeks). Upon delivery aliquot. Store at -20°C or -80°C. Avoid freeze / thaw cycle.
バッファー	Preservative: 0.05% Sodium azide Constituent: PBS
精製度	Protein A purified
ポリ/モノ	ポリクローナル
アイソタイプ	IgG

アプリケーション

Our [Abpromise guarantee](#) covers the use of **ab13891** in the following tested applications.

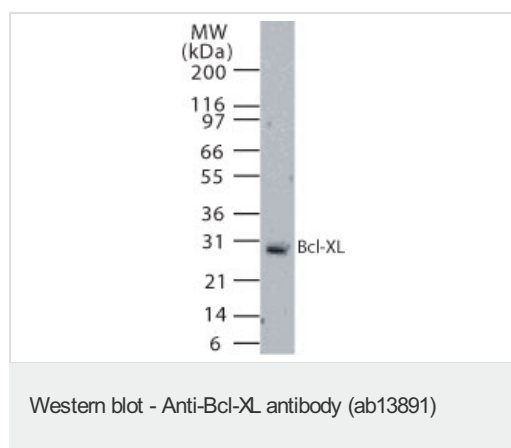
The application notes include recommended starting dilutions; optimal dilutions/concentrations should be determined by the end user.

アプリケーション	Abreviews	特記事項
WB		Use a concentration of 1 - 2 µg/ml. Detects a band of approximately 28 kDa.

ターゲット情報

機能	Potent inhibitor of cell death. Inhibits activation of caspases (By similarity). Appears to regulate cell death by blocking the voltage-dependent anion channel (VDAC) by binding to it and preventing the release of the caspase activator, CYC1, from the mitochondrial membrane. Isoform Bcl-X(S) promotes apoptosis.
組織特異性	Bcl-X(S) is expressed at high levels in cells that undergo a high rate of turnover, such as developing lymphocytes. In contrast, Bcl-X(L) is found in tissues containing long-lived postmitotic cells, such as adult brain.
配列類似性	Belongs to the Bcl-2 family.
ドメイン	The BH4 motif is required for anti-apoptotic activity. The BH1 and BH2 motifs are required for both heterodimerization with other Bcl-2 family members and for repression of cell death.
翻訳後修飾	Proteolytically cleaved by caspases during apoptosis. The cleaved protein, lacking the BH4 motif, has pro-apoptotic activity.
細胞内局在	Mitochondrion membrane. Nucleus membrane. Mitochondrial membranes and perinuclear envelope.

画像



Western blot analysis of Bcl-xL using ab13891 at 2 µg/ml against 20 µg of Rh30 cell lysate.

Western blot analysis of Bcl-xL using ab13891 at 2 µg/ml against 20 µg of Rh30 cell lysate.

Please note: All products are "FOR RESEARCH USE ONLY AND ARE NOT INTENDED FOR DIAGNOSTIC OR THERAPEUTIC USE"

Our Abpromise to you: Quality guaranteed and expert technical support

- Replacement or refund for products not performing as stated on the datasheet
- Valid for 12 months from date of delivery
- Response to your inquiry within 24 hours
- We provide support in Chinese, English, French, German, Japanese and Spanish

- Extensive multi-media technical resources to help you
- We investigate all quality concerns to ensure our products perform to the highest standards

If the product does not perform as described on this datasheet, we will offer a refund or replacement. For full details of the Abpromise, please visit <http://www.abcam.co.jp/abpromise> or contact our technical team.

Terms and conditions

- Guarantee only valid for products bought direct from Abcam or one of our authorized distributors