

Product datasheet

Anti-RON (phospho Y1238) antibody ab125291

画像数 1

製品の概要

製品名	Anti-RON (phospho Y1238) antibody
製品の詳細	Rabbit polyclonal to RON (phospho Y1238)
由来種	Rabbit
アプリケーション	適用あり: Dot blot, WB, IP, ELISA, IHC-P
種交差性	交差種: Mouse, Human 交差が予測される動物種: Rat
免疫原	Synthetic peptide containing epitope - EPYYS - with a single phosphorylation site Y1238 of Human RON. Run BLAST with Run BLAST with
ポジティブ・コントロール	RON-transfected HEK293 cell lysate

製品の特性

製品の状態	Liquid
保存方法	Shipped at 4°C. Upon delivery aliquot and store at -20°C or -80°C. Avoid repeated freeze / thaw cycles.
バッファー	pH: 7.20 Constituent: 99% Tris buffered saline
精製度	Immunogen affinity purified
ポリ/モノ	ポリクローナル
アイソタイプ	IgG

アプリケーション

Our [Abpromise guarantee](#) covers the use of **ab125291** in the following tested applications.

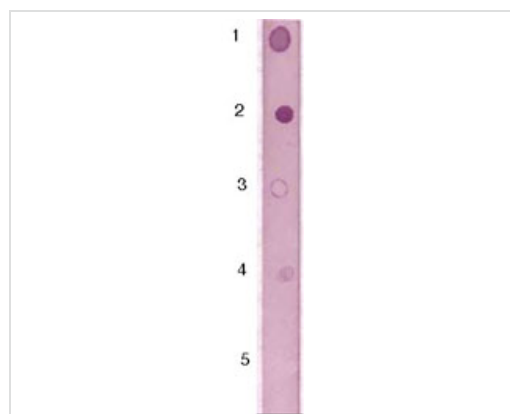
The application notes include recommended starting dilutions; optimal dilutions/concentrations should be determined by the end user.

アプリケーション	Abreviews	特記事項
Dot blot		1/2000.
WB		Use a concentration of 0.1 - 1 µg/ml. Detects a band of approximately 185 kDa (predicted molecular weight: 152 kDa).
IP		Use a concentration of 2 - 5 µg/ml.
ELISA		Use a concentration of 0.01 - 0.1 µg/ml.
IHC-P		Use a concentration of 2 - 5 µg/ml.

ターゲット情報

機能	Receptor for macrophage stimulating protein (MSP). Has a tyrosine-protein kinase activity.
組織特異性	Keratinocytes and lung.
配列類似性	Belongs to the protein kinase superfamily. Tyr protein kinase family. Contains 3 IPT/TIG domains. Contains 1 protein kinase domain. Contains 1 Sema domain.
翻訳後修飾	Proteolytic processing yields the two subunits. Phosphorylated in response to ligand binding.
細胞内局在	Membrane.

画像



Dot Blot: 1 µg peptide was blotted onto NC membrane. 1: RON (pY1238/Y1239). 2: RON (Y1238). 3: RON (Y1239). 4: RON (Nonphospho). 5: Non-related Phosphopeptide. ab125291 used at a dilution of 1/2000.

Dot Blot - Anti-RON (phospho Y1238) antibody (ab125291)

Please note: All products are "FOR RESEARCH USE ONLY AND ARE NOT INTENDED FOR DIAGNOSTIC OR THERAPEUTIC USE"

Our Abpromise to you: Quality guaranteed and expert technical support

- Replacement or refund for products not performing as stated on the datasheet
- Valid for 12 months from date of delivery
- Response to your inquiry within 24 hours

- We provide support in Chinese, English, French, German, Japanese and Spanish
- Extensive multi-media technical resources to help you
- We investigate all quality concerns to ensure our products perform to the highest standards

If the product does not perform as described on this datasheet, we will offer a refund or replacement. For full details of the Abpromise, please visit <http://www.abcam.co.jp/abpromise> or contact our technical team.

Terms and conditions

- Guarantee only valid for products bought direct from Abcam or one of our authorized distributors