


Product datasheet

Anti-RhoA (phospho S188) antibody ab125275

★★★★☆ 2 Abreviews 1 References 画像数 3

製品の概要

製品名	Anti-RhoA (phospho S188) antibody
製品の詳細	Rabbit polyclonal to RhoA (phospho S188)
由来種	Rabbit
アプリケーション	適用あり: WB, IP, ELISA, IHC-P, Dot blot, IHC-Fr
種交差性	交差種: Mouse, Human 交差が予測される動物種: Rat 
免疫原	A synthetic peptide corresponding to the C terminal of epitope KKKSG at a phosphorylation Serine 188 of Human RhoA protein.
ポジティブ・コントロール	MCF7 cell lysate

製品の特性

製品の状態	Liquid
保存方法	Shipped at 4°C. Store at +4°C short term (1-2 weeks). Upon delivery aliquot. Store at -20°C or -80°C. Avoid freeze / thaw cycle.
バッファー	pH: 7.20 Constituent: Tris buffered saline Note: Contains antibody stabilizer
精製度	Immunogen affinity purified
特記事項(精製)	ab125275 is purified by site-specific epitope affinity purification.
ポリ/モノ	ポリクローナル
アイソタイプ	IgG

アプリケーション

Our [Abpromise guarantee](#) covers the use of **ab125275** in the following tested applications.

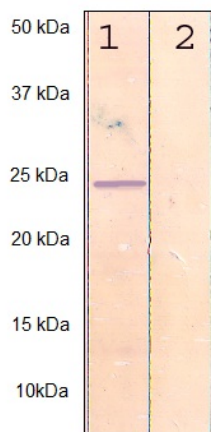
The application notes include recommended starting dilutions; optimal dilutions/concentrations should be determined by the end user.

アプリケーション	Abreviews	特記事項
WB		Use a concentration of 0.1 - 1 µg/ml. Detects a band of approximately 24 kDa (predicted molecular weight: 22 kDa).
IP		Use a concentration of 2 - 5 µg/ml.
ELISA		Use a concentration of 0.01 - 0.1 µg/ml.
IHC-P		Use a concentration of 2 - 5 µg/ml.
Dot blot		1/2000.
IHC-Fr	★★★★☆☆	Use at an assay dependent concentration.

ターゲット情報

機能	Regulates a signal transduction pathway linking plasma membrane receptors to the assembly of focal adhesions and actin stress fibers. Serves as a target for the yopT cysteine peptidase from <i>Yersinia pestis</i> , vector of the plague, and <i>Yersinia pseudotuberculosis</i> , which causes gastrointestinal disorders. May be an activator of PLCE1. Activated by ARHGEF2, which promotes the exchange of GDP for GTP.
配列類似性	Belongs to the small GTPase superfamily. Rho family.
ドメイン	The basic-rich region is essential for yopT recognition and cleavage.
翻訳後修飾	<p>Substrate for botulinum ADP-ribosyltransferase.</p> <p>Cleaved by yopT protease when the cell is infected by some <i>Yersinia</i> pathogens. This removes the lipid attachment, and leads to its displacement from plasma membrane and to subsequent cytoskeleton cleavage.</p> <p>AMPylation at Tyr-34 and Thr-37 are mediated by bacterial enzymes in case of infection by <i>H.somnus</i> and <i>V.parahaemolyticus</i>, respectively. AMPylation occurs in the effector region and leads to inactivation of the GTPase activity by preventing the interaction with downstream effectors, thereby inhibiting actin assembly in infected cells. It is unclear whether some human enzyme mediates AMPylation; FICD has such ability in vitro but additional experiments remain to be done to confirm results in vivo.</p> <p>Ubiquitinated by the BCR(BACURD1) and BCR(BACURD2) E3 ubiquitin ligase complexes, leading to its degradation by the proteasome, thereby regulating the actin cytoskeleton and cell migration.</p>
細胞内局在	Cell membrane. Cytoplasm > cytoskeleton.

画像



Western blot - Anti-RhoA (phospho S188) antibody (ab125275)

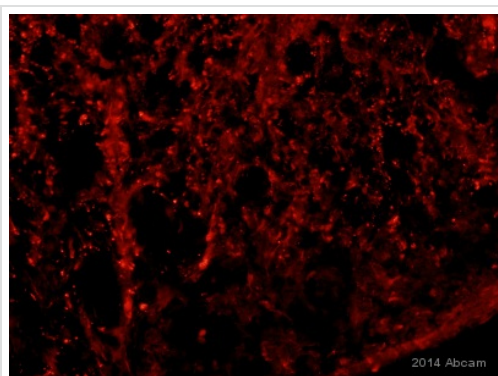
All lanes : Anti-RhoA (phospho S188) antibody (ab125275) at 1/500 dilution

Lane 1 : MCF7 cell lysate

Lane 2 : MCF7 cell lysate with immunizing peptide

Predicted band size: 22 kDa

Observed band size: 24 kDa



Immunohistochemistry (Frozen sections) - Anti-RhoA (phospho S188) antibody (ab125275)

This image is courtesy of an Abreview submitted by Shao-ming Wang

ab125275 staining RhoA (phospho S188) in mouse spinal cord tissue sections by Immunohistochemistry (IHC-Fr - frozen sections). Tissue was fixed with formaldehyde, permeabilized with citrate buffer and blocked with 5% serum for 1 hour at 25°C. Samples were incubated with primary antibody (5µg/ml) for 16 hours at 4°C. An Alexa Fluor® 568-conjugated goat anti-rabbit IgG polyclonal (1/200) was used as the secondary antibody.



Dot Blot - Anti-RhoA (phospho S188) antibody (ab125275)

ab125275, at 1/2000 dilution, staining RhoA in 1 µg peptide blotted onto NC membrane (1) compared with non-phosphopeptide RhoA (2) and a non-related phosphopeptide (3) by Dot Blot.

Please note: All products are "FOR RESEARCH USE ONLY AND ARE NOT INTENDED FOR DIAGNOSTIC OR THERAPEUTIC USE"

Our Abpromise to you: Quality guaranteed and expert technical support

- Replacement or refund for products not performing as stated on the datasheet
- Valid for 12 months from date of delivery
- Response to your inquiry within 24 hours

- We provide support in Chinese, English, French, German, Japanese and Spanish
- Extensive multi-media technical resources to help you
- We investigate all quality concerns to ensure our products perform to the highest standards

If the product does not perform as described on this datasheet, we will offer a refund or replacement. For full details of the Abpromise, please visit <http://www.abcam.co.jp/abpromise> or contact our technical team.

Terms and conditions

- Guarantee only valid for products bought direct from Abcam or one of our authorized distributors