

Product datasheet

Anti-LEF1 antibody ab124271

2 References [画像数 2](#)

製品の概要

製品名	Anti-LEF1 antibody
製品の詳細	Rabbit polyclonal to LEF1
由来種	Rabbit
アプリケーション	適用あり: WB, IP
種交差性	交差種: Human 交差が予測される動物種: Mouse, Rat, Rabbit, Guinea pig, Cow, Dog, Pig, Chimpanzee, Rhesus monkey, Gorilla, Chinese hamster, Orangutan, Elephant ▲
免疫原	Synthetic peptide, corresponding to a region within amino acids 250-300 of Human LEF1 (NP_057353.1).
ポジティブ・コントロール	<div style="border: 1px solid #ccc; padding: 5px; display: inline-block; margin-bottom: 5px;"> ウェスタン・ブロット用ポジティブコントロール Recombinant Human LEF1 protein > </div> Jurkat whole cell lysate

製品の特性

製品の状態	Liquid
保存方法	Shipped at 4°C. Upon delivery aliquot and store at -20°C. Avoid freeze / thaw cycles.
バッファー	Preservative: 0.09% Sodium azide Constituent: 99% Tris citrate/phosphate Note: pH 7 to 8
精製度	Immunogen affinity purified
特記事項 (精製)	ab124271 was affinity purified using an epitope specific to LEF1 immobilized on solid support.
ポリ/モノ	ポリクローナル
アイソタイプ	IgG

アプリケーション

Our [Abpromise guarantee](#) covers the use of **ab124271** in the following tested applications.

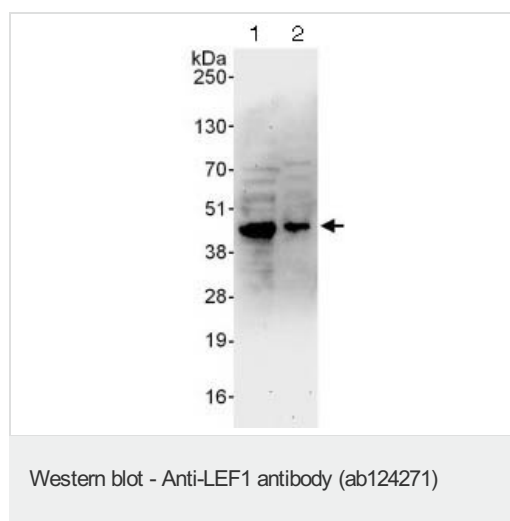
The application notes include recommended starting dilutions; optimal dilutions/concentrations should be determined by the end user.

アプリケーション	Abreviews	特記事項
WB		1/500 - 1/2500.
IP		Use at 2-10 µg/mg of lysate.

ターゲット情報

機能	Participates in the Wnt signaling pathway. Activates transcription of target genes in the presence of CTNNB1 and EP300. May play a role in hair cell differentiation and follicle morphogenesis. TLE1, TLE2, TLE3 and TLE4 repress transactivation mediated by LEF1 and CTNNB1. Regulates T-cell receptor alpha enhancer function. Binds DNA in a sequence-specific manner. PIAG antagonizes both Wnt-dependent and Wnt-independent activation by LEF1 (By similarity). Isoform 3 lacks the CTNNB1 interaction domain and may be an antagonist for Wnt signaling. Isoform 5 transcriptionally activates the fibronectin promoter, binds to and represses transcription from the E-cadherin promoter in a CTNNB1-independent manner, and is involved in reducing cellular aggregation and increasing cell migration of pancreatic cancer cells. Isoform 1 transcriptionally activates MYC and CCND1 expression and enhances proliferation of pancreatic tumor cells.
組織特異性	Detected in thymus. Not detected in normal colon, but highly expressed in colon cancer biopsies and colon cancer cell lines. Expressed in several pancreatic tumors and weakly expressed in normal pancreatic tissue. Isoforms 1 and 5 are detected in several pancreatic cell lines.
配列類似性	Belongs to the TCF/LEF family. Contains 1 HMG box DNA-binding domain.
ドメイン	Proline-rich and acidic regions are implicated in the activation functions of RNA polymerase II transcription factors.
細胞内局在	Nucleus. Found in nuclear bodies upon PIASG binding.

画像



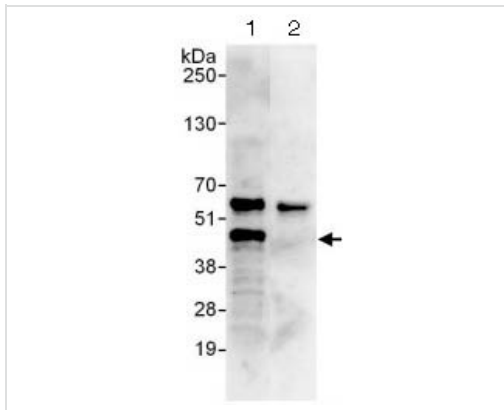
All lanes : Anti-LEF1 antibody (ab124271) at 0.4 µg/ml

Lane 1 : Jurkat whole cell lysate at 50 µg

Lane 2 : Jurkat whole cell lysate at 15 µg

Developed using the ECL technique.

Exposure time: 3 minutes



Immunoprecipitation - Anti-LEF1 antibody
(ab124271)

ab124271 at 1 $\mu\text{g/ml}$ staining LEF1 in Jurkat whole cell lysate immunoprecipitated using ab124271 at 6 $\mu\text{g/mg}$ lysate (1 mg/IP; 20% of IP loaded/lane). Lane 2: control IgG. Predicted band size : 44 kDa. Exposure time: 30 seconds

Please note: All products are "FOR RESEARCH USE ONLY AND ARE NOT INTENDED FOR DIAGNOSTIC OR THERAPEUTIC USE"

Our Abpromise to you: Quality guaranteed and expert technical support

- Replacement or refund for products not performing as stated on the datasheet
- Valid for 12 months from date of delivery
- Response to your inquiry within 24 hours
- We provide support in Chinese, English, French, German, Japanese and Spanish
- Extensive multi-media technical resources to help you
- We investigate all quality concerns to ensure our products perform to the highest standards

If the product does not perform as described on this datasheet, we will offer a refund or replacement. For full details of the Abpromise, please visit <http://www.abcam.co.jp/abpromise> or contact our technical team.

Terms and conditions

- Guarantee only valid for products bought direct from Abcam or one of our authorized distributors